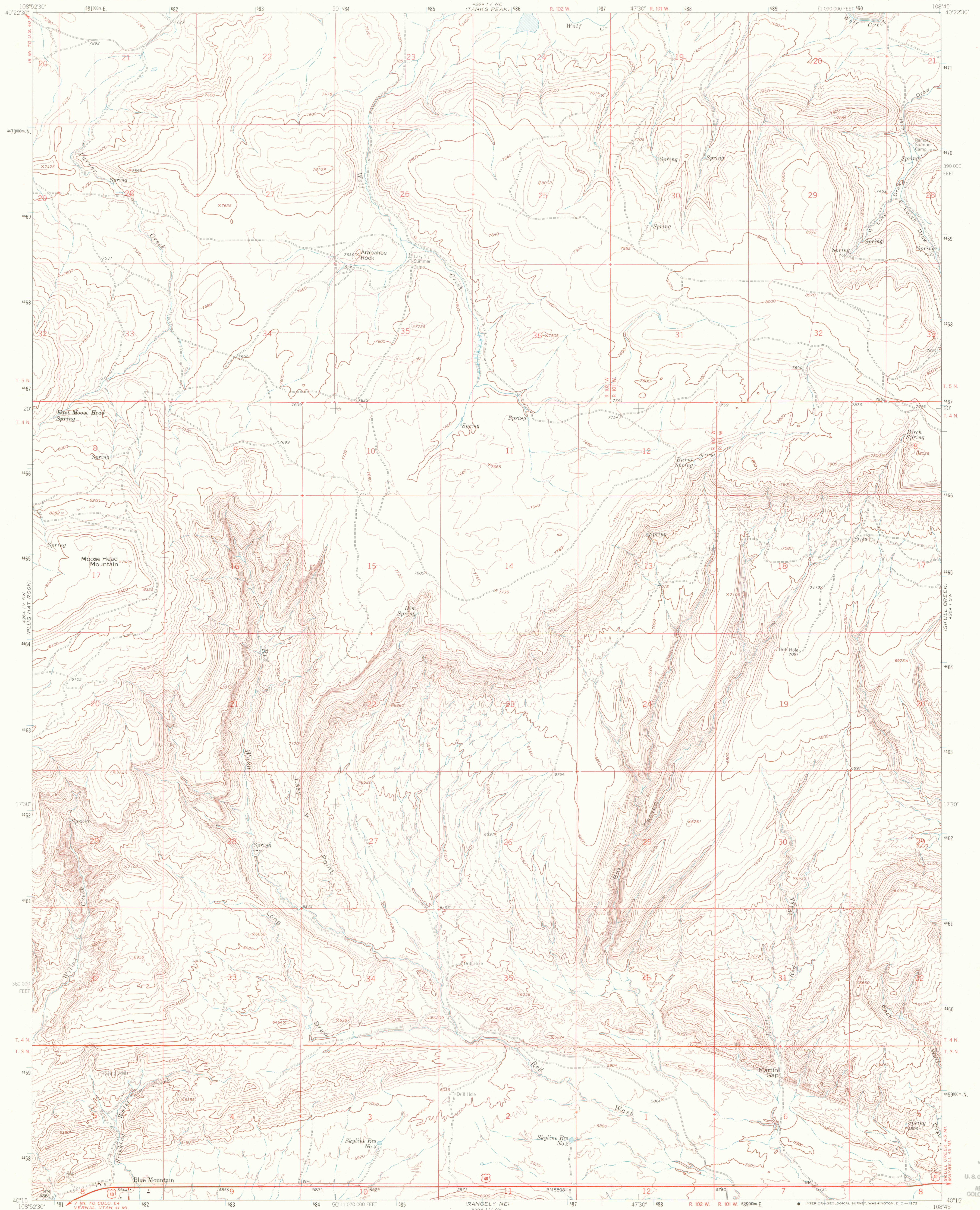
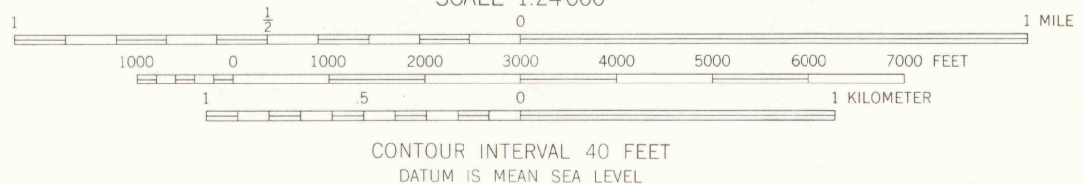
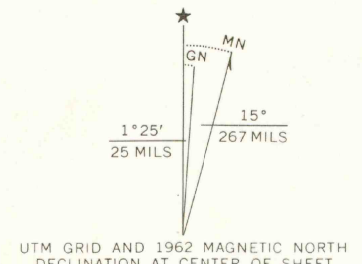


UNITED STATES
DEPARTMENT OF THE INTERIOR
GEOLOGICAL SURVEY

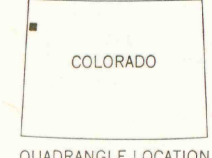
LAZY Y POINT QUADRANGLE
COLORADO-MOFFAT CO.
7.5 MINUTE SERIES (TOPOGRAPHIC)



Mapped, edited, and published by the Geological Survey
Control by USGS and USC&GS
Topography by photogrammetric methods from aerial photographs taken 1962. Field checked 1962.
Polyconic projection. 1927 North American datum
10,000-foot grid based on Colorado coordinate system, north zone
1000-meter Universal Transverse Mercator grid ticks, zone 12, shown in blue
Fine red dashed lines indicate selected fence and field lines



CONTOUR INTERVAL 40 FEET
DATUM IS MEAN SEA LEVEL



ROAD CLASSIFICATION

Heavy duty	Light duty
Medium-duty	Unimproved dirt
U.S. Route	

THIS MAP COMPLIES WITH NATIONAL MAP ACCURACY STANDARDS
FOR SALE BY U.S. GEOLOGICAL SURVEY, DENVER, COLORADO 80225, OR WASHINGTON, D. C. 20242
A FOLDER DESCRIBING TOPOGRAPHIC MAPS AND SYMBOLS IS AVAILABLE ON REQUEST



LAZY Y POINT, COLO.
N4015-W10845/7.5
1962
AMS 4264 IV SE-SERIES Y877

JUL 10 1993
U.S. GOVERNMENT DEPOSIT
FOR MAPS
ARTHUR LAKES LIBRARY
COLORADO SCHOOL OF MINES
OFFICE OF THE
LIBRARY USE CALL
COLORADO SCHOOL OF MINES LIBRARY
24
34
MAP ROOM