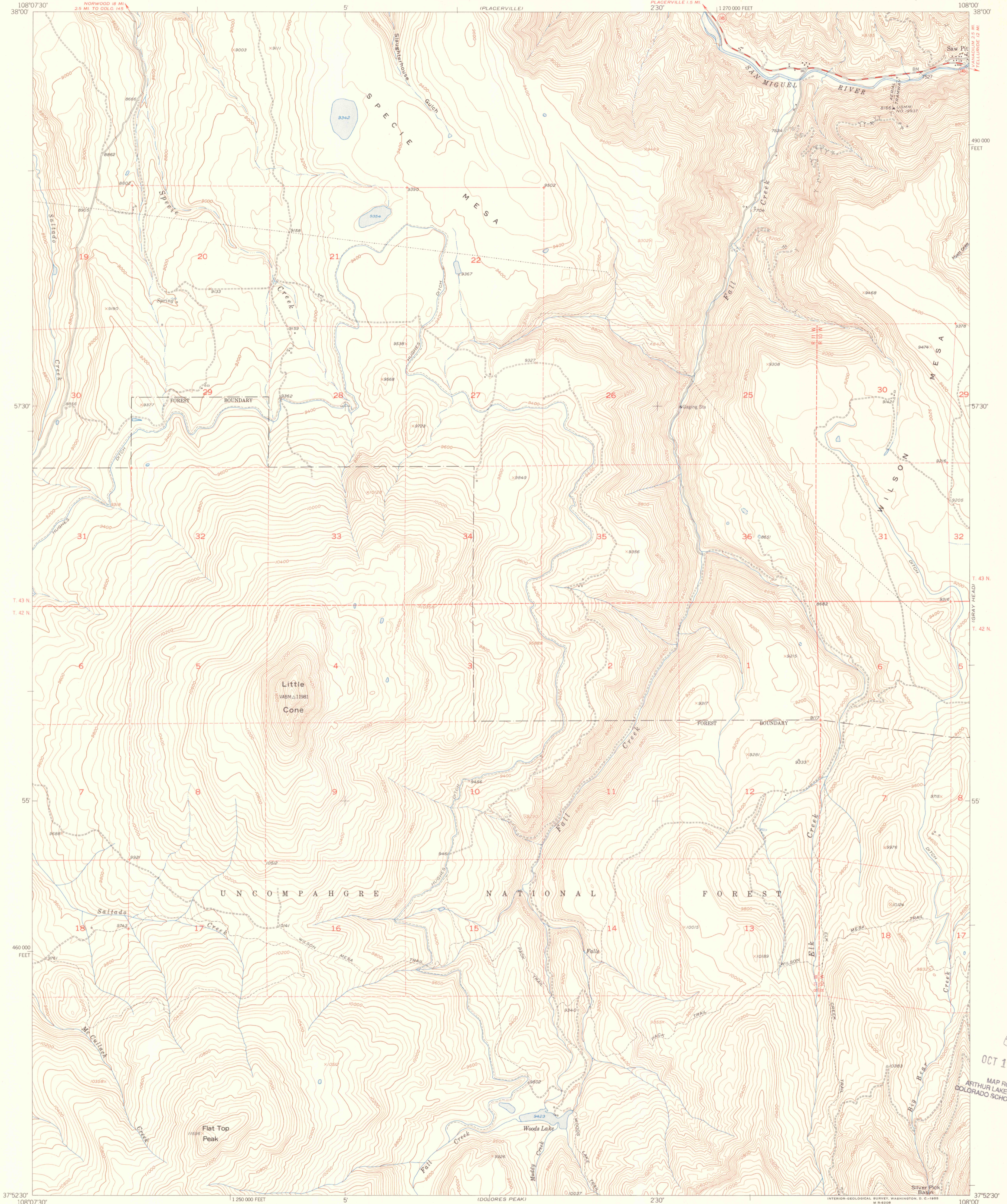


MONTROSE 1:25000



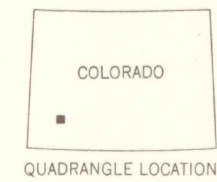
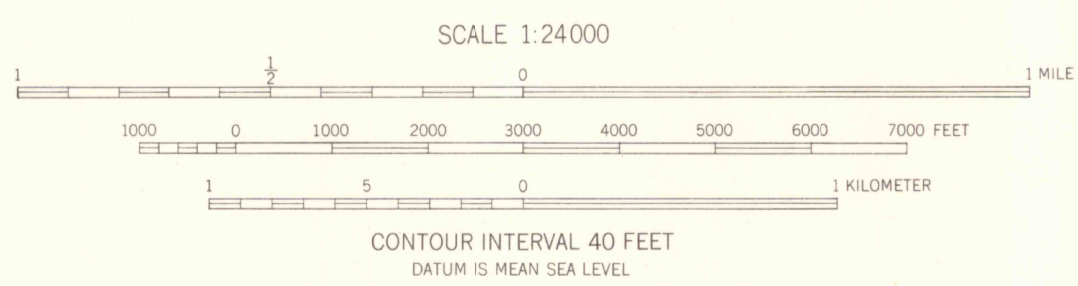
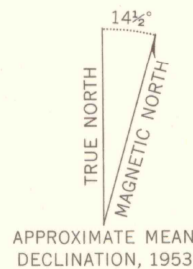
Mapped, edited, and published by the Geological Survey
Control by USGS and USC&GS

Topography from aerial photographs by multiplex methods
Aerial photographs taken 1952. Field check 1953

Polyconic projection. 1927 North American datum
10,000-foot grid based on Colorado coordinate system,
south zone

Dashed land lines indicate approximate locations
Certain land lines in T. 42 N.-T. 43 N.-R. 10 W. and R. 11 W.
are omitted because of insufficient data

All mining features are inactive
Unchecked elevations are shown in brown



ROAD CLASSIFICATION

Heavy-duty	4 LANE 6 LANE	Light-duty
Medium-duty	4 LANE 6 LANE	Unimproved dirt

U. S. Route State Route

LITTLE CONE, COLO.
N3752.5-W10800/7.5

1953

THIS MAP COMPLIES WITH NATIONAL MAP ACCURACY STANDARDS
FOR SALE BY U. S. GEOLOGICAL SURVEY, FEDERAL CENTER, DENVER, COLORADO OR WASHINGTON 25, D. C.
A FOLDER DESCRIBING TOPOGRAPHIC MAPS AND SYMBOLS IS AVAILABLE ON REQUEST

OCT 15 1996
MAP ROOM
ARTHUR LAKES LIBRARY
COLORADO SCHOOL OF MINES

3701
C222
S24
U5
OFFICE COPY
LIBRARY USE ONLY