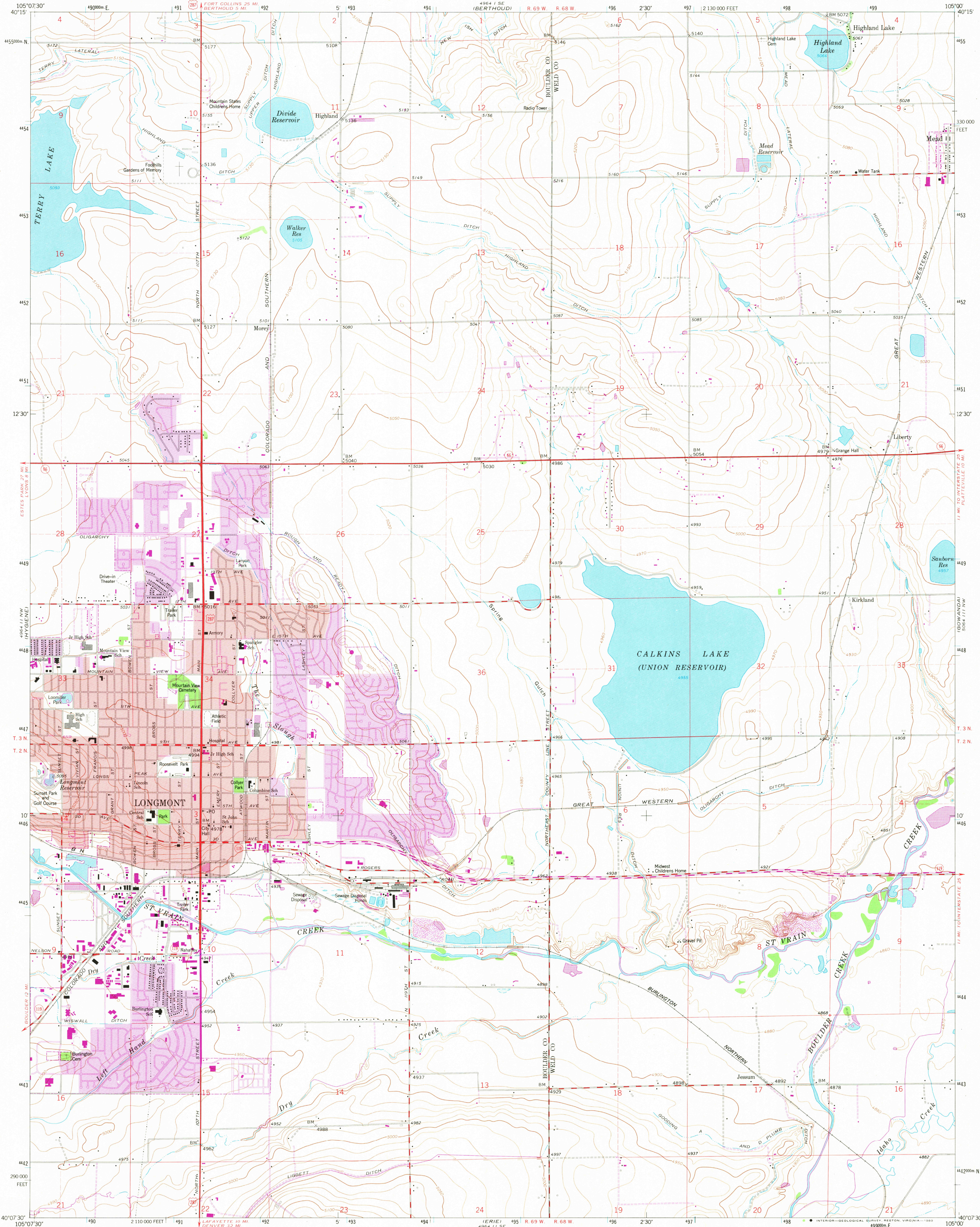


UNITED STATES
DEPARTMENT OF THE INTERIOR
GEOLOGICAL SURVEY

LONGMONT QUADRANGLE
COLORADO
7.5 MINUTE SERIES (TOPOGRAPHIC)



Mapped, edited, and published by the Geological Survey
Revised in cooperation with the Inter-County
Regional Planning Commission
Control by USGS and NOS/NOAA
Topography by photogrammetric methods from aerial photographs
taken 1948-1949 and planimetric surveys 1950. Revised from
aerial photographs taken 1966. Field checked 1968
Polyconic projection. 1927 North American datum
10,000-foot grid based on Colorado coordinate system, north zone
1000-meter Universal Transverse Mercator grid ticks,
zone 13, shown in blue
Red tint indicates areas in which only landmark buildings are shown
Fine red dashed lines indicate selected fence lines

To place on the predicted North American Datum 1983
move the projection lines 5 meters north and
47 meters east as shown by dashed corner ticks

SCALE 1:24 000
1 000 2000 3000 4000 5000 6000 7000 FEET
1 5 10 KILOMETER
CONTOUR INTERVAL 10 FEET
NATIONAL GEODETIC VERTICAL DATUM OF 1929
THIS MAP COMPLIES WITH NATIONAL MAP ACCURACY STANDARDS
FOR SALE BY U. S. GEOLOGICAL SURVEY, DENVER, COLORADO 80225, OR RESTON, VIRGINIA 22092
A FOLDER DESCRIBING TOPOGRAPHIC MAPS AND SYMBOLS IS AVAILABLE ON REQUEST

ROAD CLASSIFICATION
Heavy-duty ——— Light-duty ———
Medium-duty ——— Unimproved dirt ———
U. S. Route ——— State Route ———
QUADRANGLE LOCATION
COLORADO
OCT 29 1980
LONGMONT, COLO.
N40075-W10500/75
1968
PHOTOREVISED 1979
DMA 4964 II NE-SERIES V877