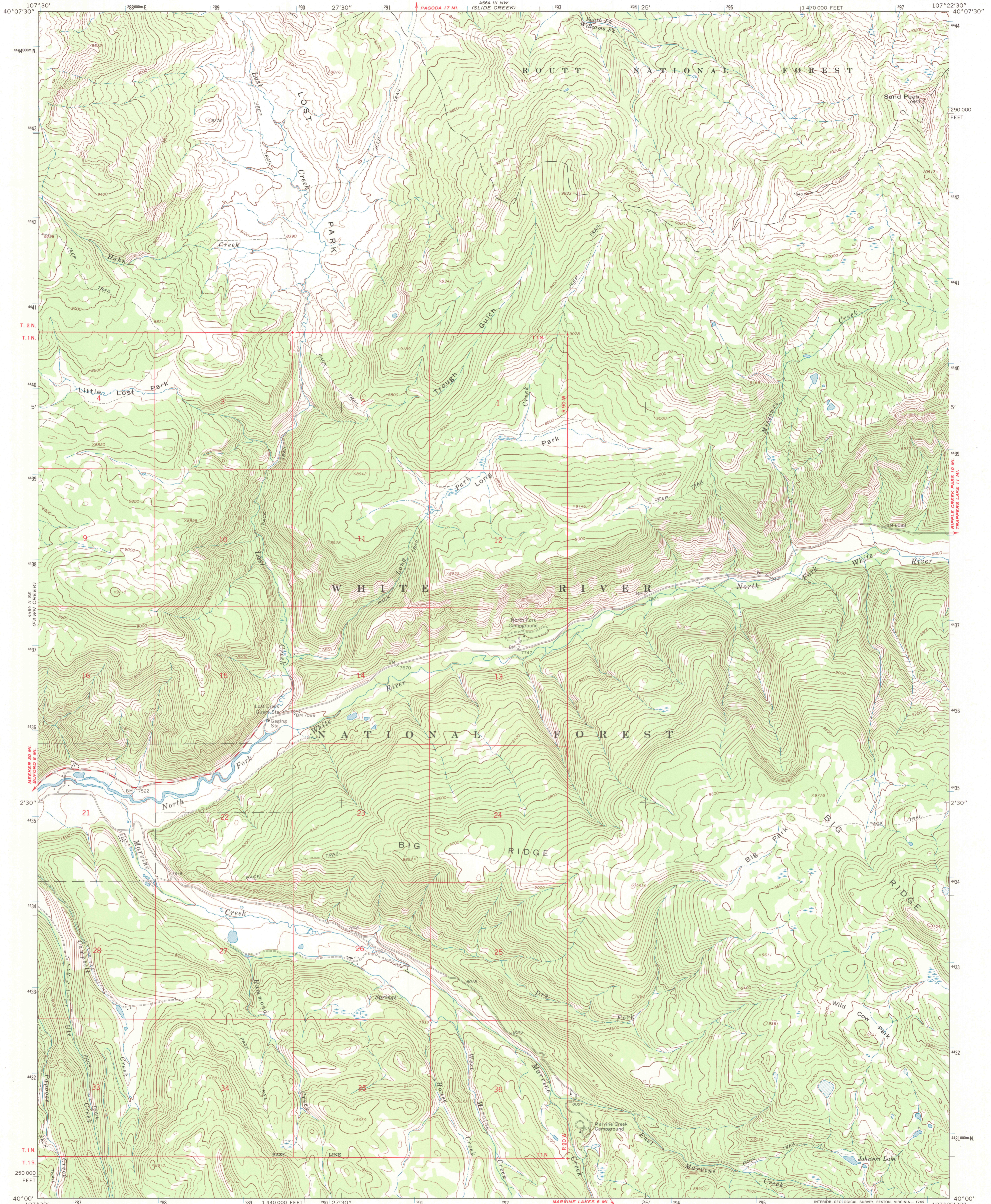




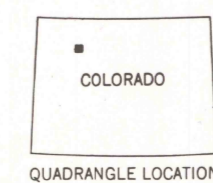
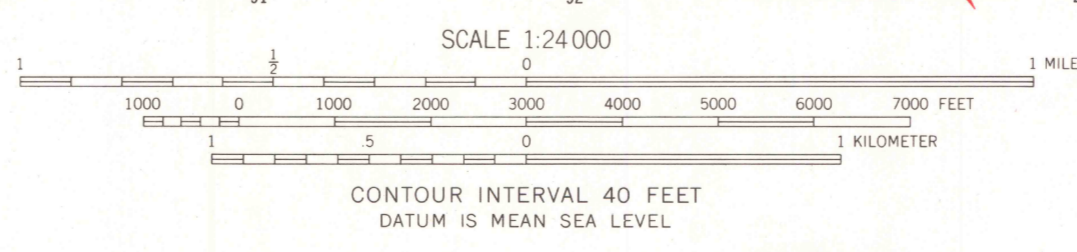
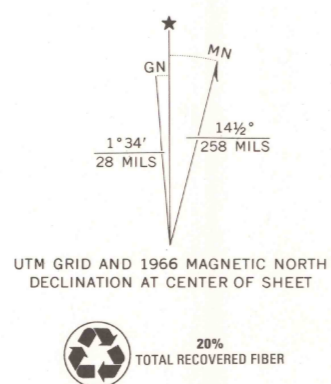
U.S. DEPARTMENT OF THE INTERIOR
U.S. GEOLOGICAL SURVEY

LOST PARK QUADRANGLE
COLORADO—RIO BLANCO CO.
7.5 MINUTE SERIES (TOPOGRAPHIC)



Mapped, edited, and published by the Geological Survey

Control by USGS and USC&GS
Topography by photogrammetric methods from aerial photographs taken 1962. Field checked 1966.
Polyconic projection. 1927 North American datum
10,000-foot grid based on Colorado coordinate system, north zone
1000-meter Universal Transverse Mercator grid ticks, zone 13, shown in blue
Where omitted, land lines have not been established or are not shown because of insufficient data



RECEIVED
SEP 30 2001
USGS NWML
HISTORICAL MAP ARCHIVES

LOST PARK, COLO.
N4000—W10722.5/7.5
1966
AMS 4564 III SW—SERIES V877

THIS MAP COMPLIES WITH NATIONAL MAP ACCURACY STANDARDS
FOR SALE BY U.S. GEOLOGICAL SURVEY, P.O. BOX 25286, DENVER, COLORADO 80225
A FOLDER DESCRIBING TOPOGRAPHIC MAPS AND SYMBOLS IS AVAILABLE ON REQUEST

