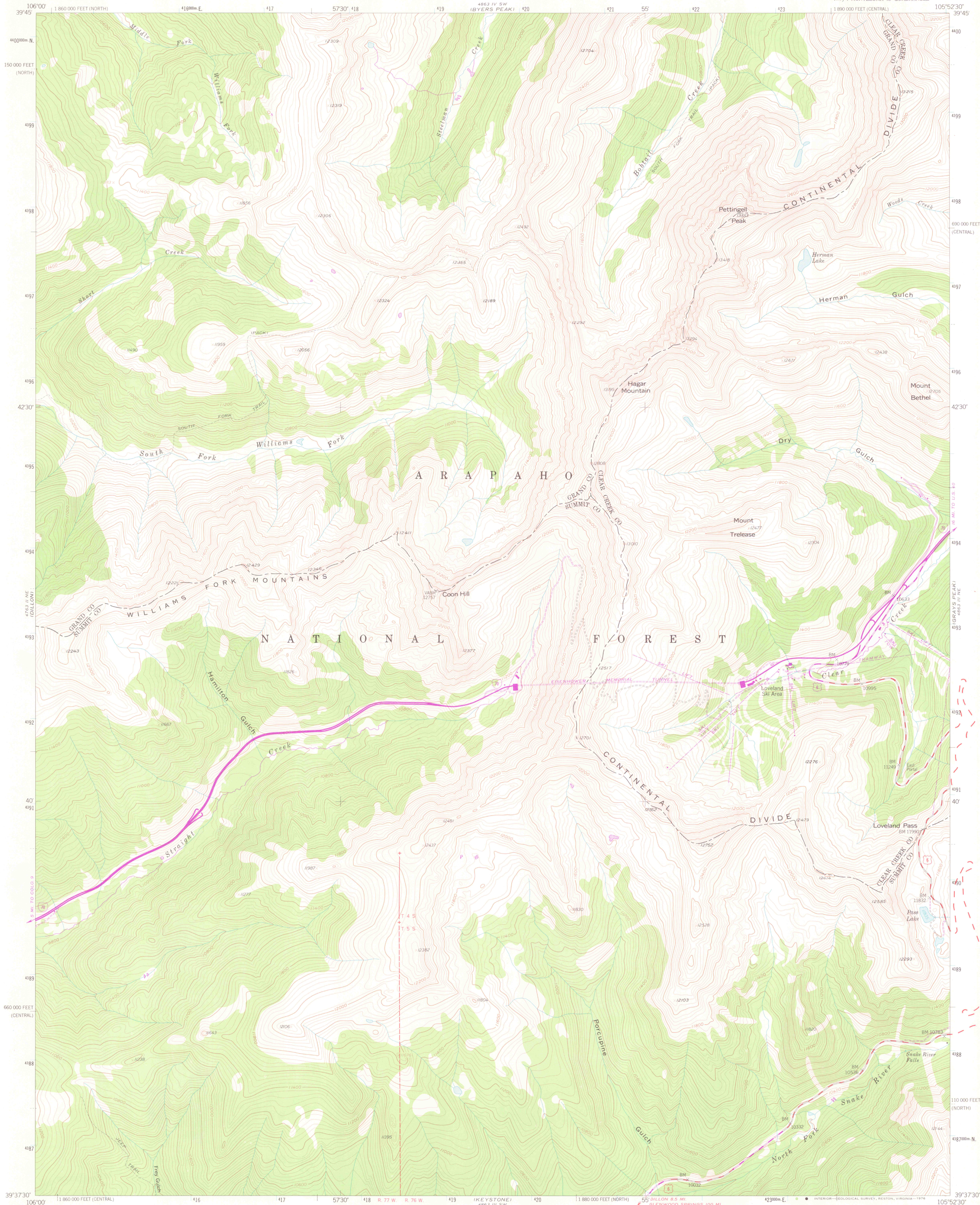


UNITED STATES  
DEPARTMENT OF THE INTERIOR  
GEOLOGICAL SURVEY

LOVELAND PASS QUADRANGLE  
COLORADO  
7.5 MINUTE SERIES (TOPOGRAPHIC)  
NW/4 MONTEZUMA 15' QUADRANGLE  
1 890 000 FEET (CENTRAL)



Mapped, edited, and published by the Geological Survey  
as part of the Department of the Interior program  
for the development of the Missouri River Basin

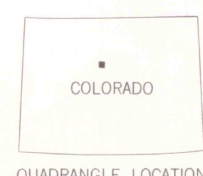
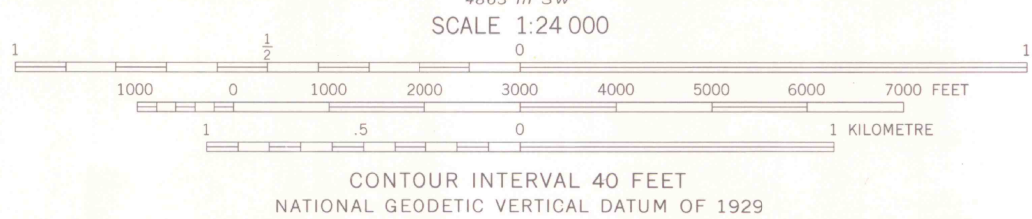
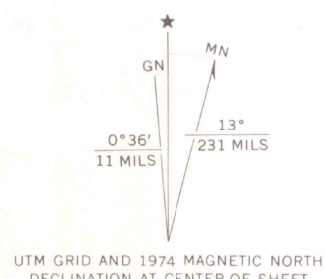
Control by USGS and NOS/NOAA

Topography from aerial photographs by photogrammetric methods  
Aerial photographs taken 1953. Field check 1958

Polyconic projection. 1927 North American datum  
10,000-foot grid based on Colorado coordinate system,  
central and north zones  
1000-metre Universal Transverse Mercator grid ticks,  
zone 13, shown in blue

Dashed land lines indicate approximate locations  
Certain land lines omitted because of insufficient data

Revisions shown in purple and recompilation of woodland areas  
compiled by the Geological Survey from aerial photographs taken 1974  
This information not field checked



ROAD CLASSIFICATION	
Primary highway, hard surface	Light-duty road, hard or improved surface
Secondary highway, hard surface	Unimproved road
Interstate Route	U. S. Route
	State Route

LOVELAND PASS, COLO.  
NW/4 MONTEZUMA 15' QUADRANGLE  
N3937.5°-W10552.5°/7.5

1958  
PHOTOREVISED 1974  
AMS 4863 III NW-SERIES V877

LIBRARY USE ONLY