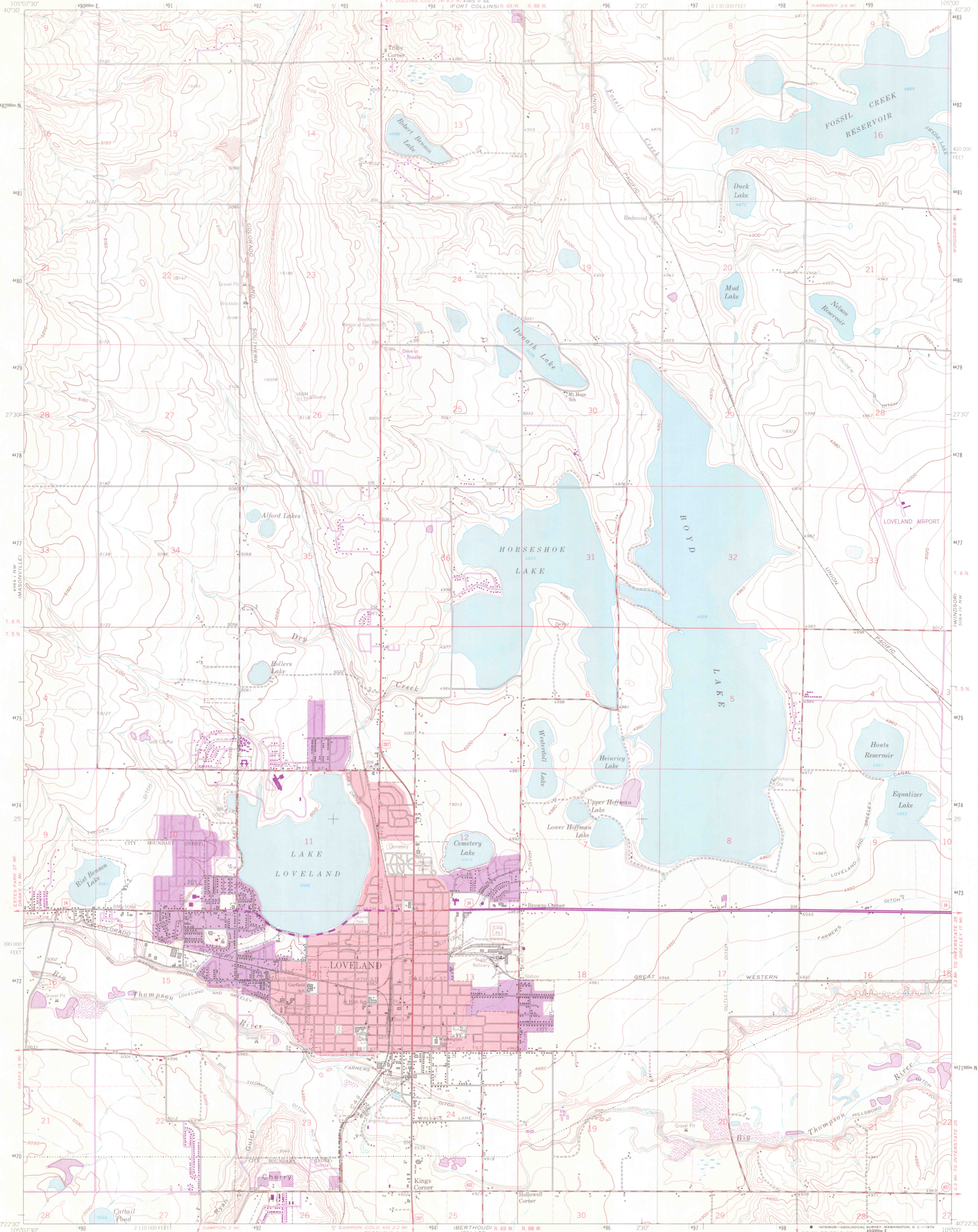
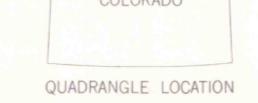
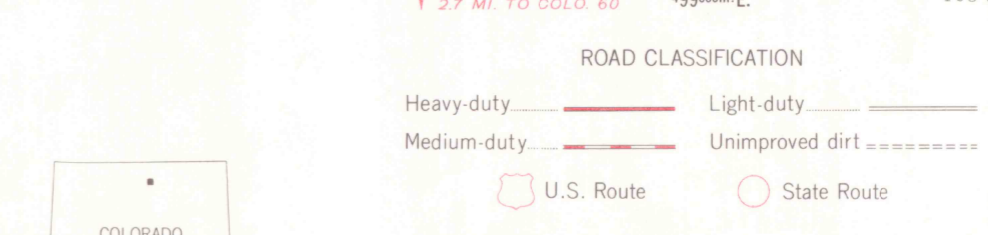
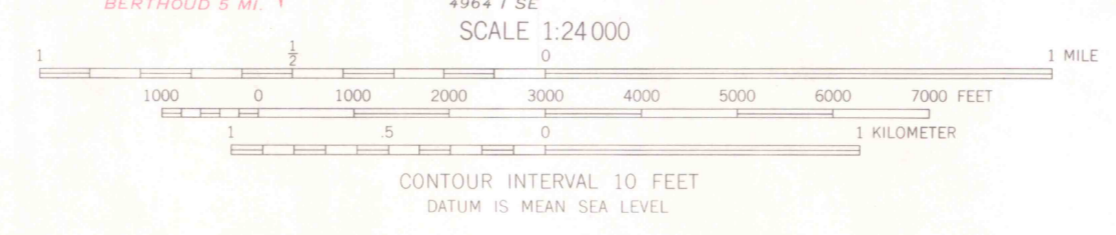
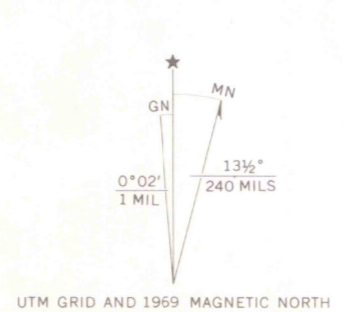


UNITED STATES
DEPARTMENT OF THE INTERIOR
GEOLOGICAL SURVEY

LOVELAND QUADRANGLE
COLORADO-LARIMER CO.
7.5 MINUTE SERIES (TOPOGRAPHIC)
NE/4 LOVELAND 15 QUADRANGLE



Mapped, edited, and published by the Geological Survey
Control by USGS and USC&GS
Topography by photogrammetric methods from aerial photographs taken 1956 and 1958. Field checked 1960
Polyconic projection. 1927 North American datum
10,000-foot grid based on Colorado coordinate system, north zone
1000-meter Universal Transverse Mercator grid ticks, zone 13, shown in blue
Fine red dashed lines indicate selected fence and field lines where generally visible on aerial photographs. This information is unchecked
Red tint indicates area in which only landmark buildings are shown
Revisions shown in purple compiled from aerial photographs taken 1969. This information not field checked
Purple tint indicates extension of urban areas



THIS MAP COMPLIES WITH NATIONAL MAP ACCURACY STANDARDS
FOR SALE BY U.S. GEOLOGICAL SURVEY, DENVER, COLORADO 80225, OR WASHINGTON, D.C. 20242
A FOLDER DESCRIBING TOPOGRAPHIC MAPS AND SYMBOLS IS AVAILABLE ON REQUEST

LIBRARY
COLORADO SCHOOL OF MINES
GOLDEN, COLORADO

LOVELAND, COLO.
NE/4 LOVELAND 15 QUADRANGLE
N40225-5-W10500/7 5
1962
PHOTOREVISED 1969
AMS 4964 I NE-SERIES V877

G
3701
C222
S24
U5
1962

