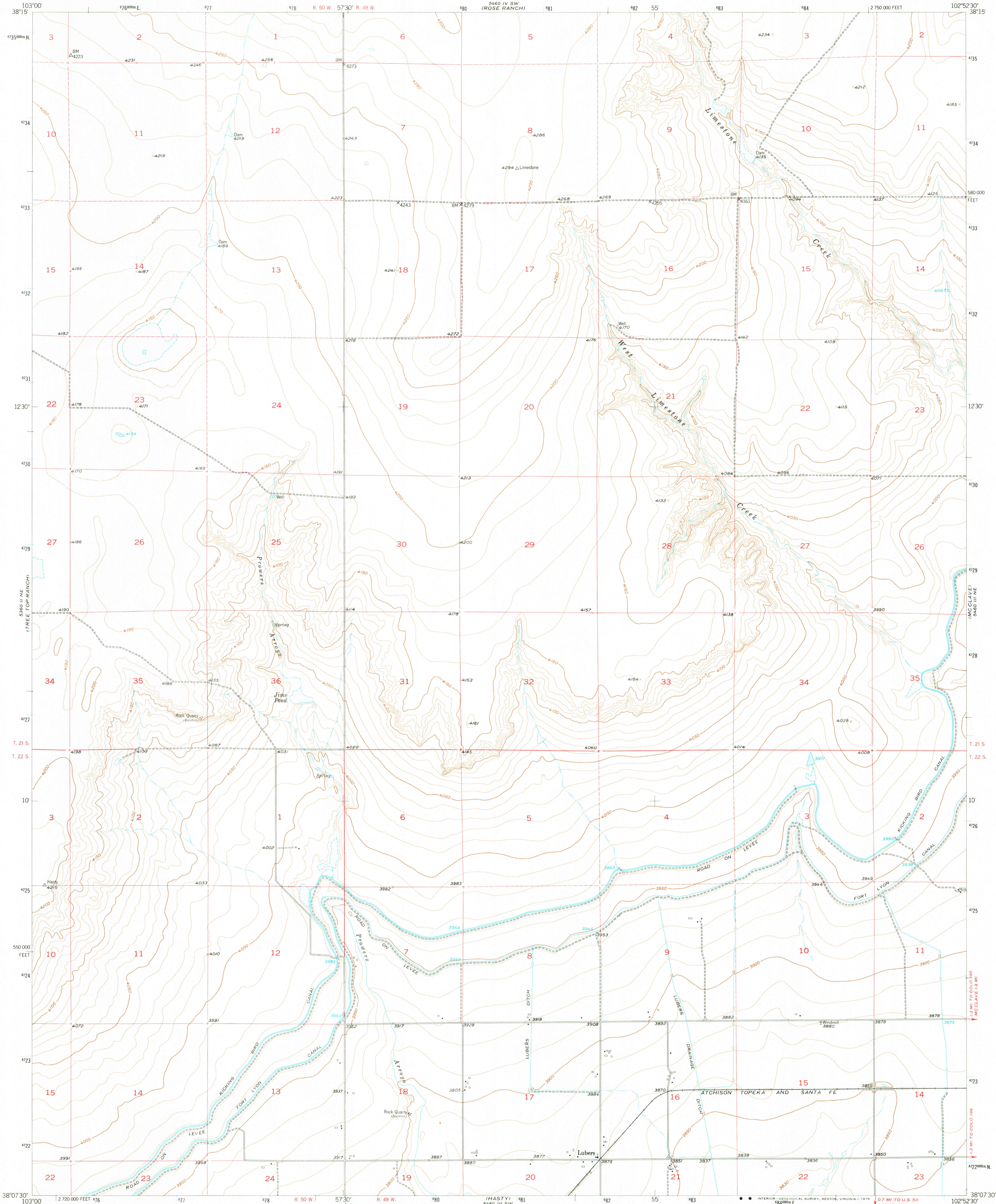
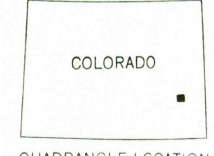
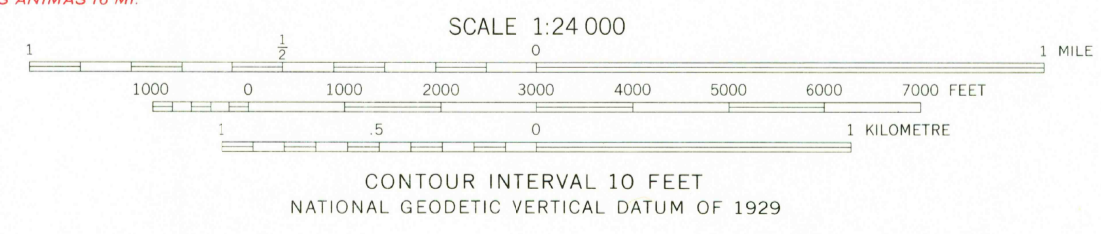
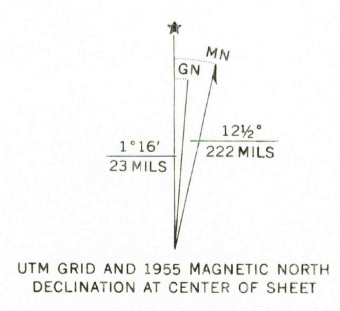


5460 IV SW
(ROSE RANCH)
5460 III SW
(WOOD LAKE)



Mapped, edited, and published by the Geological Survey
Control by USGS and USC&GS
Culture and drainage in part compiled from aerial photographs
taken 1947. Topography by planetable surveys 1955
Polyconic projection. 1927 North American datum
10,000-foot grid based on Colorado coordinate system,
south zone
Dashed land lines indicate approximate locations
1000-metre Universal Transverse Mercator grid ticks,
zone 13, shown in blue



ROAD CLASSIFICATION

Heavy-duty	Light-duty
Medium-duty	Unimproved dirt
U.S. Route	State Route

THIS MAP COMPLIES WITH NATIONAL MAP ACCURACY STANDARDS
FOR SALE BY U. S. GEOLOGICAL SURVEY, DENVER, COLORADO 80225, OR RESTON, VIRGINIA 22092
A FOLDER DESCRIBING TOPOGRAPHIC MAPS AND SYMBOLS IS AVAILABLE ON REQUEST

USCS
Historical File
Topographic Division
LUBERS, COLO.
N3807.5-W10252.5/7.5
1955
AMS 5460 III NW-SERIES V877
MAR 1 1 1976