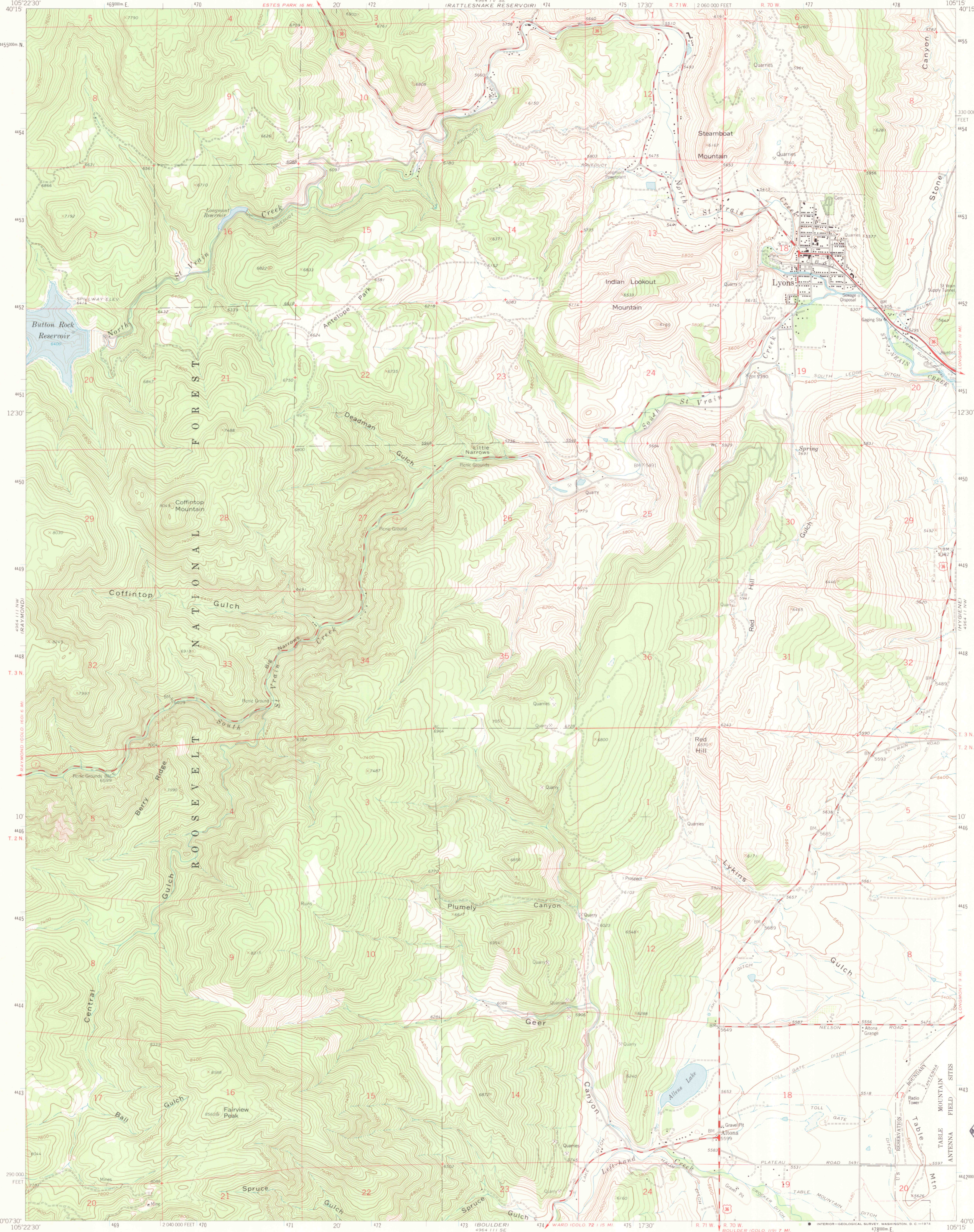
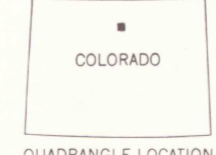
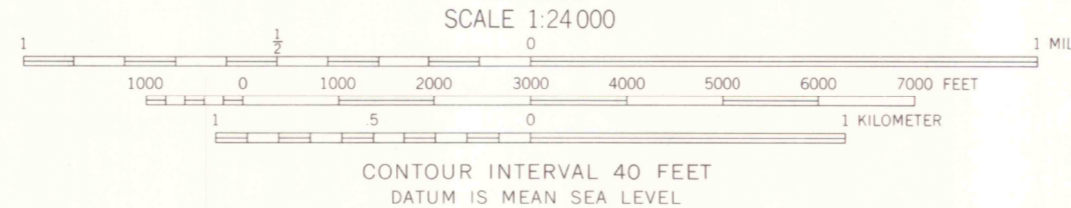
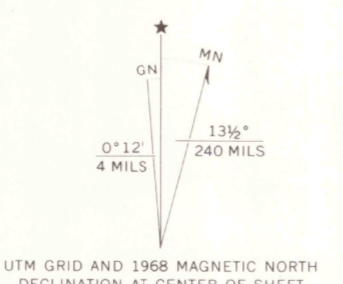


4964 III SE
(GARTER LAKE RESERVOIR)



Mapped, edited, and published by the Geological Survey
Revised in cooperation with the Inter-County
Regional Planning Commission
Control by USGS and USC&GS
Topography by photogrammetric methods from aerial photographs
taken 1953. Field checked 1957. Revised from aerial
photographs taken 1967. Field checked 1968
Polyconic projection. 1927 North American datum
10,000-foot grid based on Colorado coordinate system,
north zone
1000-meter Universal Transverse Mercator grid ticks,
zone 13, shown in blue
Fine red dashed lines indicate selected fence lines
Areas covered by dashed light blue pattern are subject
to controlled inundation



ROAD CLASSIFICATION

Heavy-duty	Light-duty
Medium-duty	Unimproved dirt
U.S. Route	State Route

LYONS, COLO.
NE/4 BOULDER 15 QUADRANGLE
N4007.5-W10515/7.5
1968

THIS MAP COMPLIES WITH NATIONAL MAP ACCURACY STANDARDS
FOR SALE BY U.S. GEOLOGICAL SURVEY, NATIONAL MAP 80225, OR WASHINGTON, D.C. 20242
A FOLDER DESCRIBING TOPOGRAPHIC MAPS AND SYMBOLS IS AVAILABLE ON REQUEST

OFFICE COPY
LIBRARY USE ONLY

AMS 4964 III NE - SERIES V877



JUL 09 2009

ARTHUR H. HARRIS
COLORADO
OF MINES

G 3700
s24
.G4
MAP ROOM