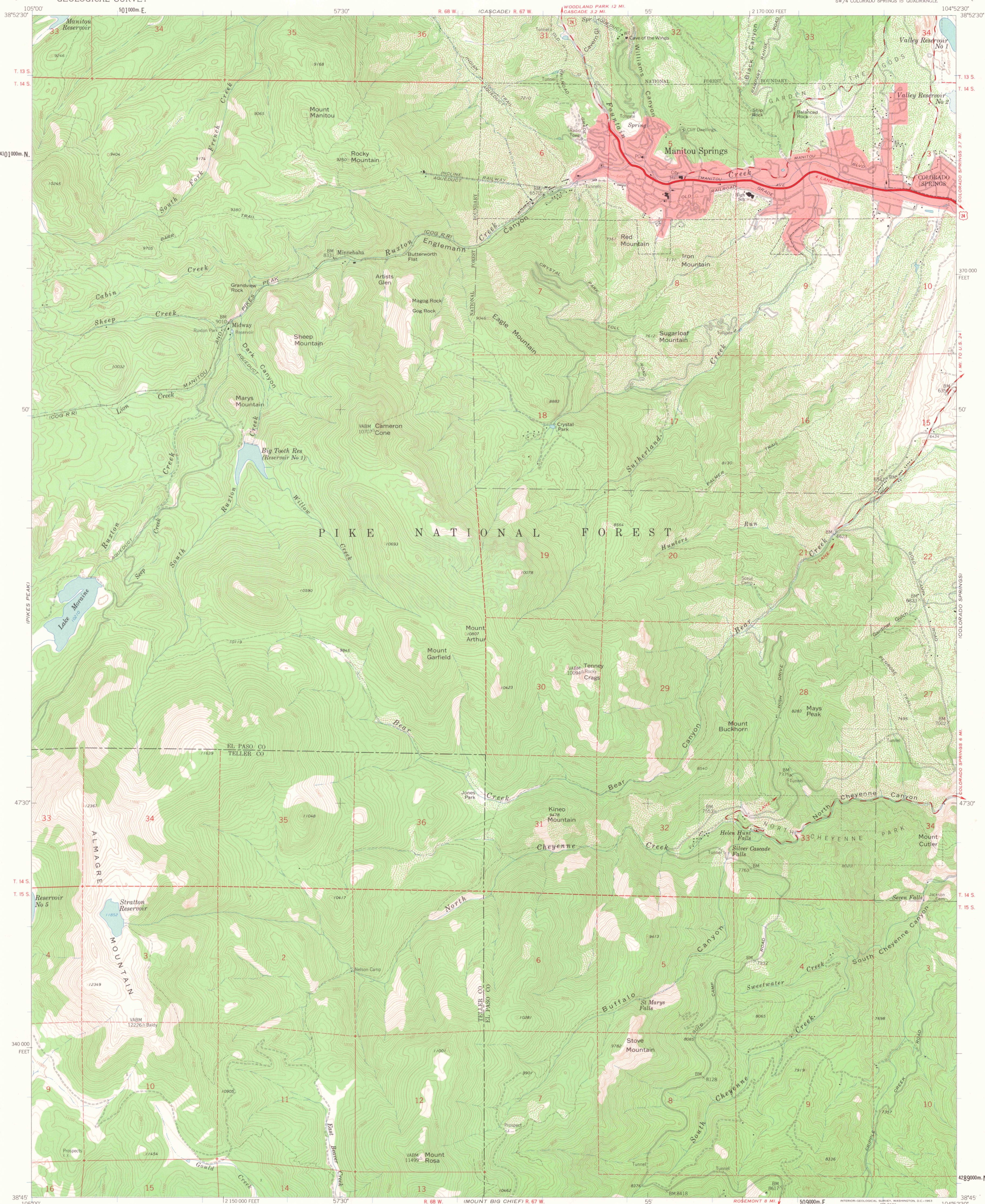


UNITED STATES  
DEPARTMENT OF THE INTERIOR  
GEOLOGICAL SURVEY

MANITOU SPRINGS QUADRANGLE  
COLORADO  
7.5 MINUTE SERIES (TOPOGRAPHIC)



Mapped, edited, and published by the Geological Survey  
in cooperation with U.S. Corps of Engineers

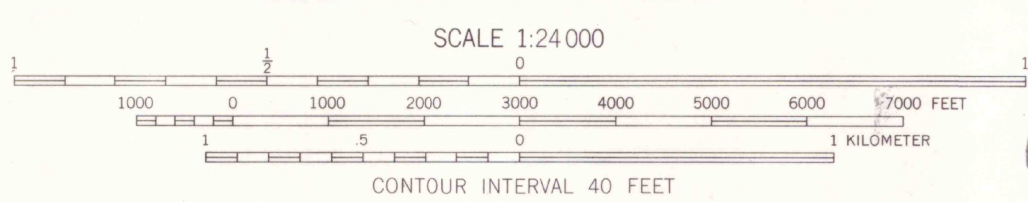
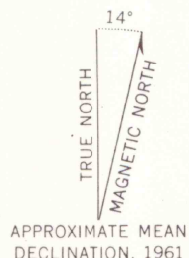
Control by USGS and USC&GS

Topography by photogrammetric methods from aerial photographs  
taken 1947. Field checked 1948. Revised from aerial photographs  
taken 1960. Field checked 1961

Polyconic projection. 1927 North American datum  
10,000-foot grid based on Colorado coordinate system, central zone  
1000-meter Universal Transverse Mercator grid ticks,  
zone 13, shown in blue

Red tint indicates area in which only landmark buildings are shown

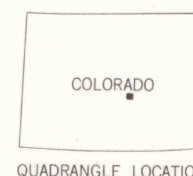
Where omitted, land lines have not been established or are  
not shown because of insufficient data



JAN 19 2006

MAP ROOM  
ARTHUR LAKES LIBRARY  
SCHOOL OF MINES

THIS MAP COMPLIES WITH NATIONAL MAP ACCURACY STANDARDS  
FOR SALE BY U.S. GEOLOGICAL SURVEY, DENVER 25, COLORADO OR WASHINGTON 25, D.C.  
A FOLDER DESCRIBING TOPOGRAPHIC MAPS AND SYMBOLS IS AVAILABLE ON REQUEST



OFFICE COPY  
LIBRARY USE ONLY

ROAD CLASSIFICATION  
Heavy-duty ——— Light-duty ———  
Medium-duty ——— Unimproved dirt ———  
U.S. Route

MANITOU SPRINGS, COLO.  
SW 1/4 COLORADO SPRINGS 15' QUADRANGLE  
N3845-W10452.5/7.5

1961

G 3700  
424  
04  
MAP ROOM