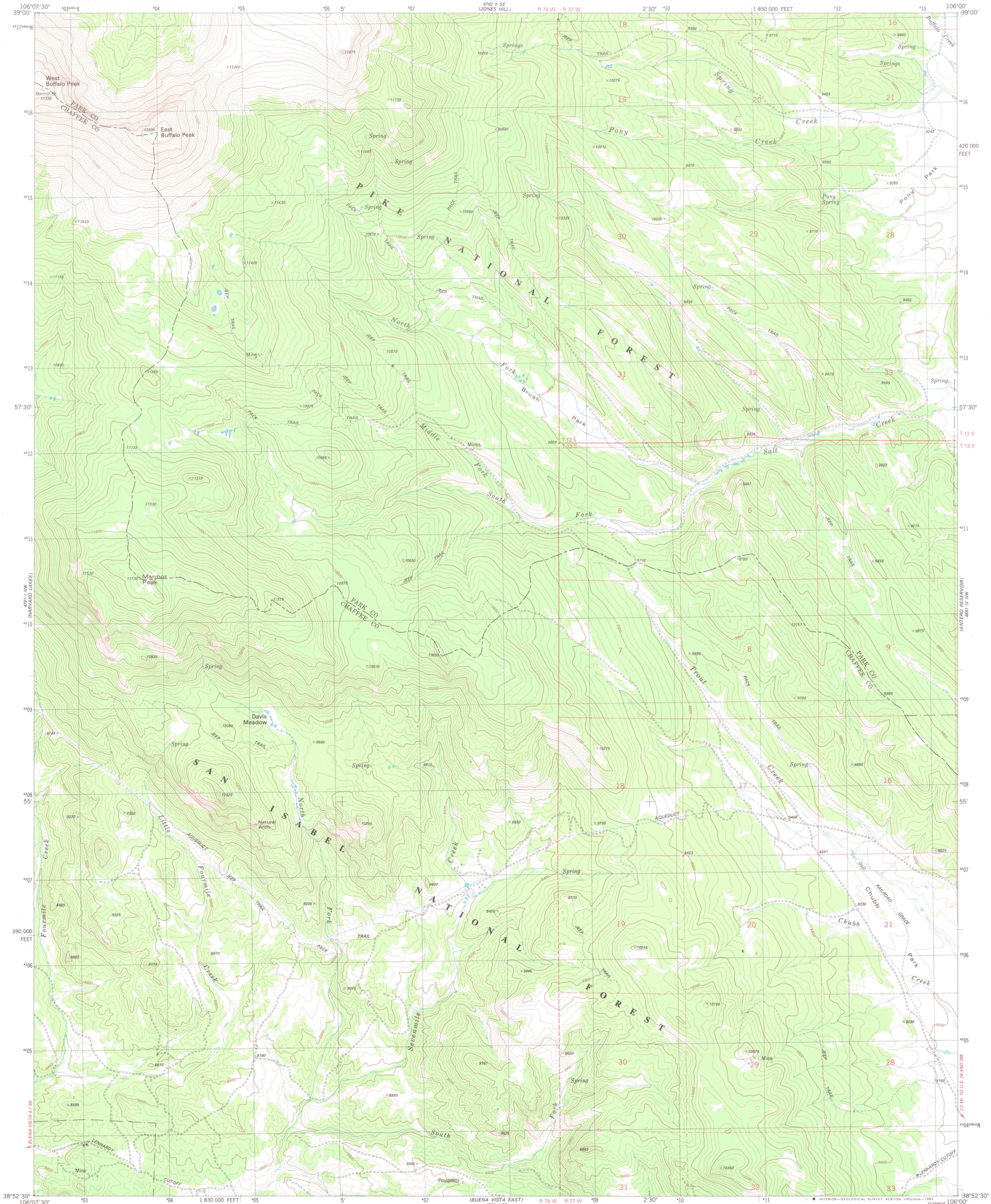


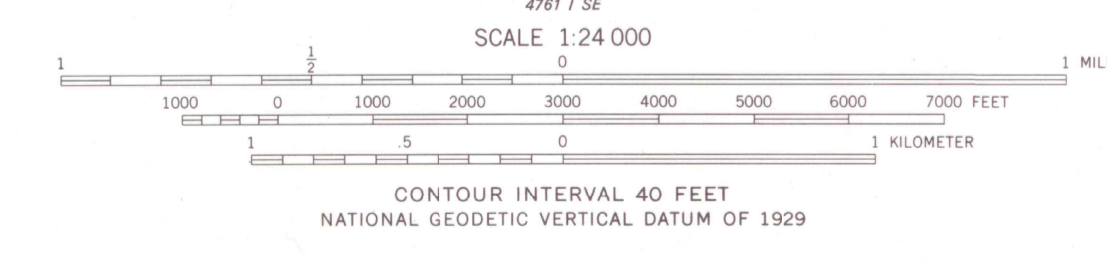
UNITED STATES  
DEPARTMENT OF THE INTERIOR  
GEOLOGICAL SURVEY

MARMOT PEAK QUADRANGLE  
COLORADO  
7.5 MINUTE SERIES (TOPOGRAPHIC)  
NE/4 BUENA VISTA 15' QUADRANGLE



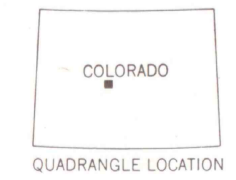
Mapped, edited, and published by the Geological Survey

Control by USGS and NOS/NOAA  
Topography by photogrammetric methods from aerial photographs taken 1975. Field checked 1976. Map edited 1982  
Projection and 10,000-foot grid ticks: Colorado coordinate system, central zone (Lambert conformal conic) 1000-meter Universal Transverse Mercator grid, zone 13 1927 North American datum  
To place on the predicted North American Datum 1983 move the projection lines 4 meters north and 50 meters east as shown by dashed corner ticks  
Certain land lines are omitted because of insufficient data  
There may be private inholdings within the boundaries of the National or State reservations shown on this map



OFFICE COPY

ROAD CLASSIFICATION	
Primary highway, hard surface	Light-duty road, hard or improved surface
Secondary highway, hard surface	Unimproved road
Interstate Route	U. S. Route
	State Route



MARMOT PEAK, COLO.  
NE/4 BUENA VISTA 15' QUADRANGLE  
N3852.5-W10600/7.5  
1982  
DMA 4781 N NE-SERIES V877

THIS MAP COMPLIES WITH NATIONAL MAP ACCURACY STANDARDS  
FOR SALE BY U. S. GEOLOGICAL SURVEY, DENVER, COLORADO 80225, OR RESTON, VIRGINIA 22092  
A FOLDER DESCRIBING TOPOGRAPHIC MAPS AND SYMBOLS IS AVAILABLE ON REQUEST

OCT 1 0 1983  
MAP ROOM  
ARTICULAR LAKES LIBRARY

LIBRARY USE ONLY