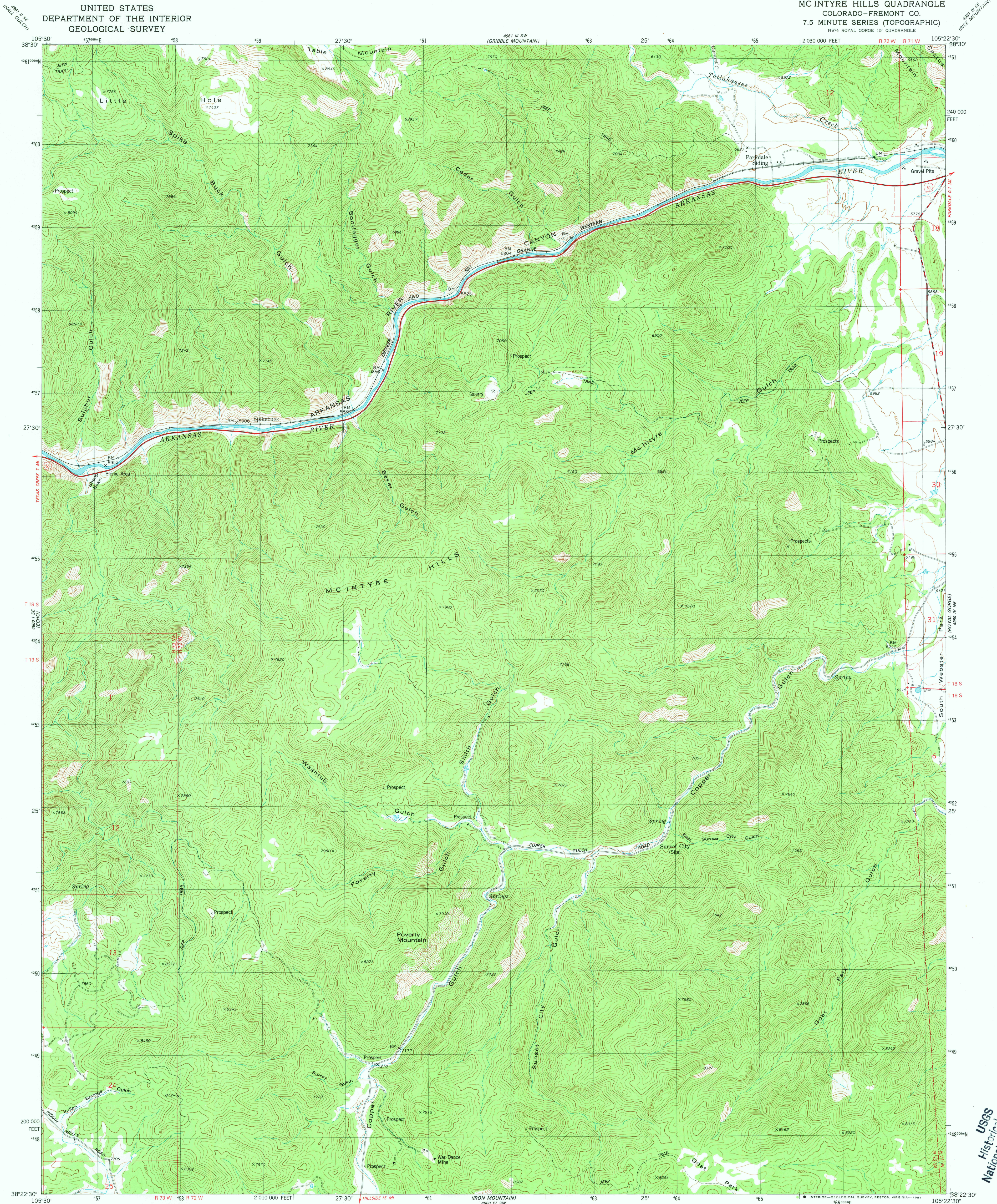
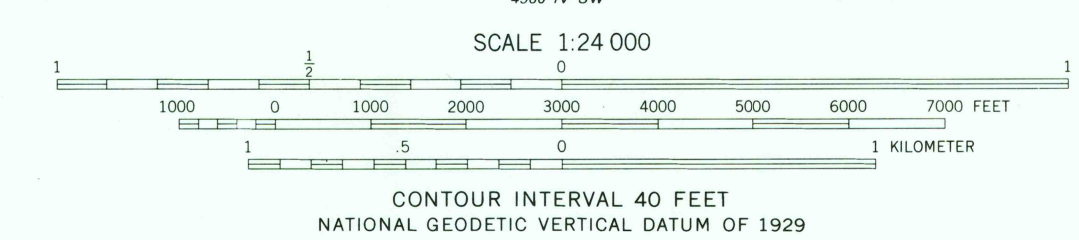
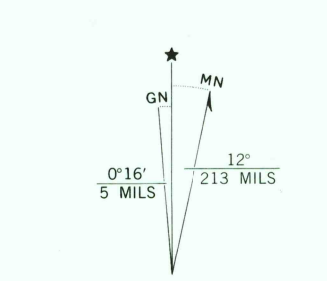


UNITED STATES  
DEPARTMENT OF THE INTERIOR  
GEOLOGICAL SURVEY

MC INTYRE HILLS QUADRANGLE  
COLORADO-FREMONT CO.  
7.5 MINUTE SERIES (TOPOGRAPHIC)  
NW/4 ROYAL GORGE 15' QUADRANGLE



Mapped, edited, and published by the Geological Survey  
Control by USGS and NOS/NOAA  
Topography by photogrammetric methods from aerial photographs  
taken 1975. Field checked 1976. Map edited 1980  
Projection and 10,000-foot grid ticks: Colorado  
coordinate system, central zone (Lambert conformal conic)  
1000-meter Universal Transverse Mercator grid, zone 13  
1927 North American datum  
To place on the predicted North American Datum 1983  
move the projection lines 3 meters north and  
49 meters east as shown by dashed corner ticks  
Fine red dashed lines indicate selected fence lines  
Where omitted, land lines have not been established or are  
not shown because of insufficient data



ROAD CLASSIFICATION  
Primary highway, hard surface ——— Light-duty road, hard or improved surface ———  
Secondary highway, hard surface ——— Unimproved road ———  
Interstate Route ——— U.S. Route ——— State Route ———

MC INTYRE HILLS, COLO.  
NW/4 ROYAL GORGE 15' QUADRANGLE  
N3822.5-W10522.5/7.5  
1980  
DMA 4960 IV NW-SERIES V877

Uses  
Historical File  
National Mapping Div.  
MAR 17 1981  
1900