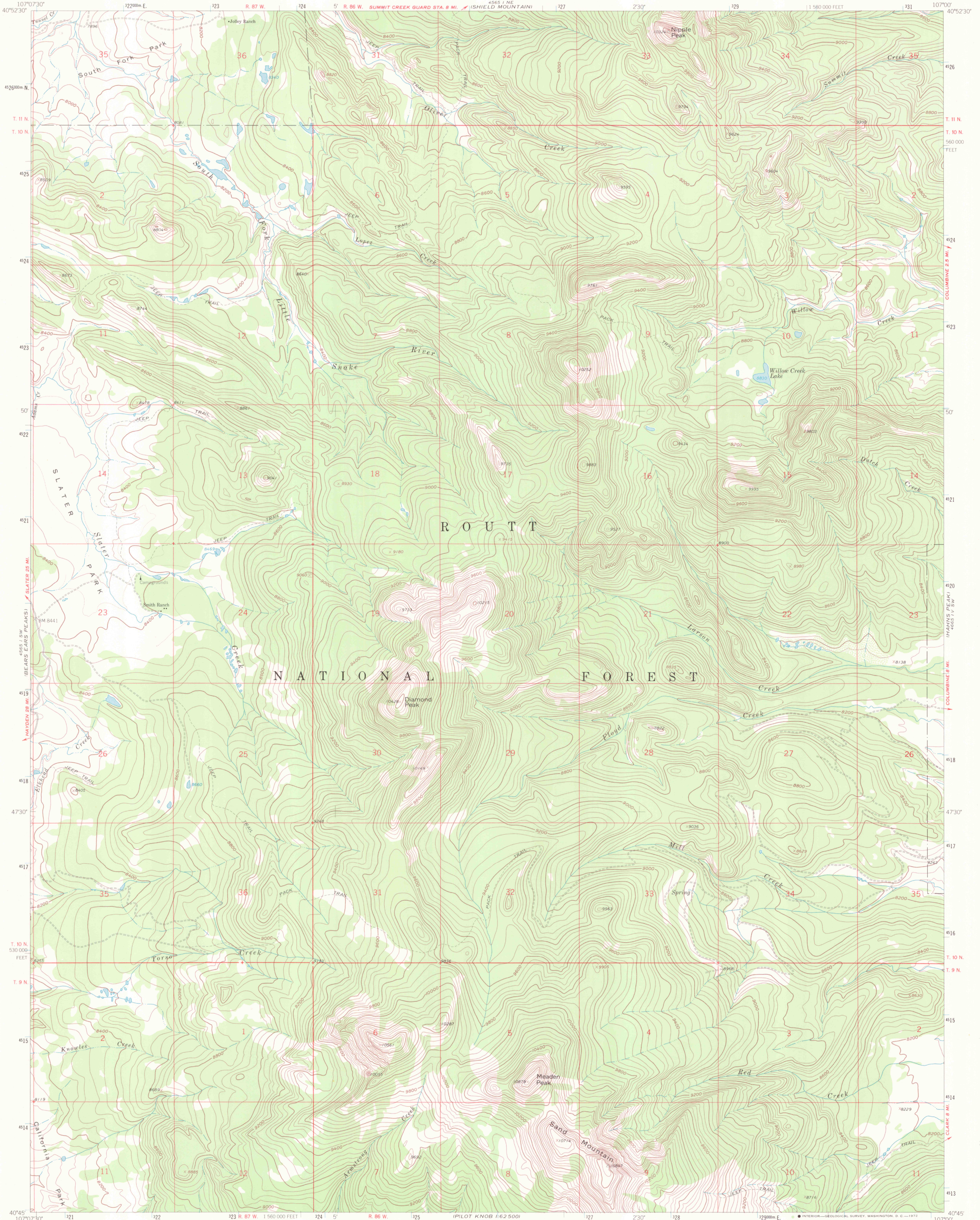
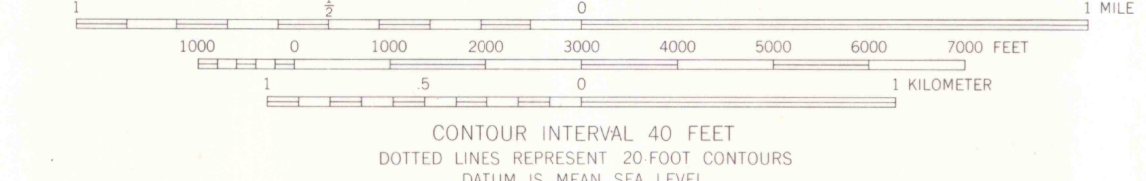
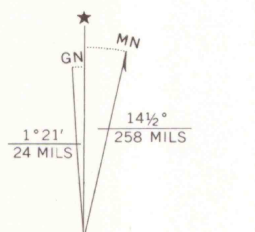


UNITED STATES  
DEPARTMENT OF THE INTERIOR  
GEOLOGICAL SURVEY

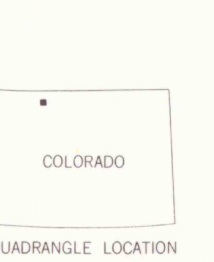
MEADEN PEAK QUADRANGLE  
COLORADO-ROUTT CO.  
7.5 MINUTE SERIES (TOPOGRAPHIC)



Mapped, edited, and published by the Geological Survey as part of the Department of the Interior program for the development of the Missouri River Basin. Control by USGS and USC&GS. Topography by photogrammetric methods from aerial photographs taken 1957. Field checked 1962. Polyconic projection. 1927 North American datum. 10,000-foot grid based on Colorado coordinate system, north zone 1000 meter Universal Transverse Mercator grid ticks, zone 13, shown in blue.



CONTOUR INTERVAL 40 FEET  
DOTTED LINES REPRESENT 20 FOOT CONTOURS  
DATUM IS MEAN SEA LEVEL



ROAD CLASSIFICATION  
Light-duty ——— Unimproved dirt - - - - -

THIS MAP COMPLIES WITH NATIONAL MAP ACCURACY STANDARDS  
FOR SALE BY U.S. GEOLOGICAL SURVEY, DENVER, COLORADO 80225, OR WASHINGTON, D. C. 20242  
A FOLDER DESCRIBING TOPOGRAPHIC MAPS AND SYMBOLS IS AVAILABLE ON REQUEST

MEADEN PEAK, COLO.  
N4045-W10700/7.5  
1962  
AMS 4555 1 SE-SERIES V877

G 3700  
c24  
.64  
MAP ROOM

NOV 27 2006