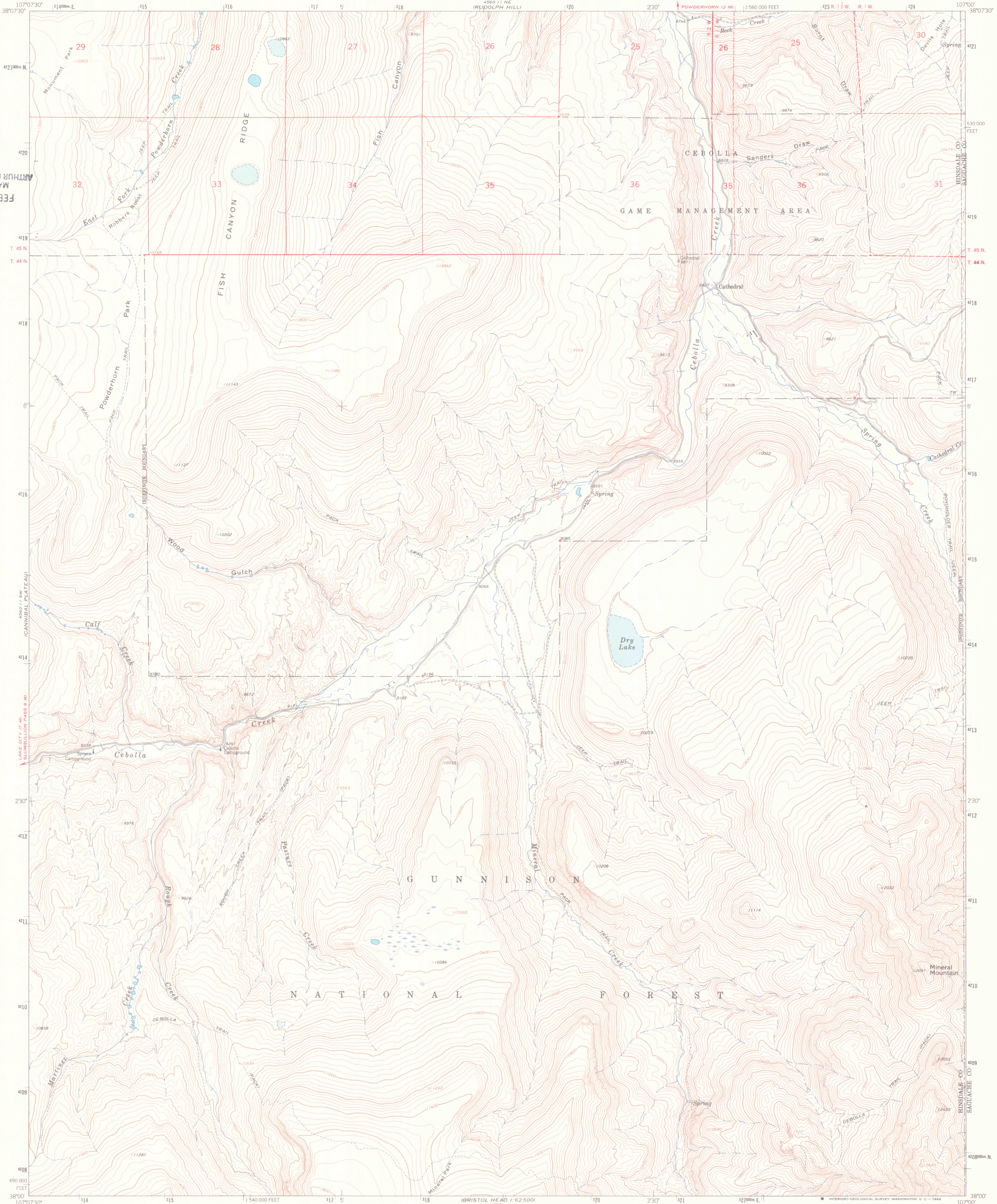


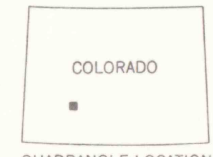
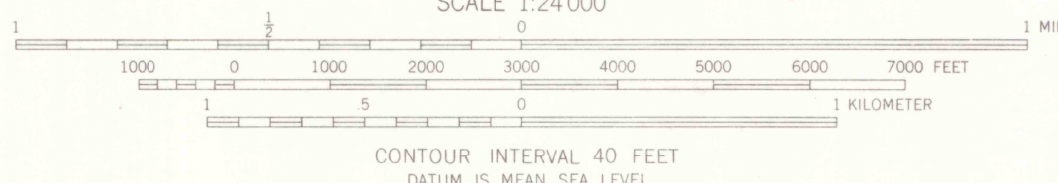
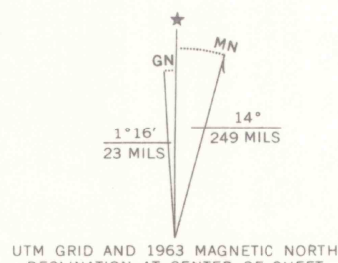
UNITED STATES
DEPARTMENT OF THE INTERIOR
GEOLOGICAL SURVEY

MONTROSE MINERAL MOUNTAIN QUADRANGLE
COLORADO
7.5 MINUTE SERIES (TOPOGRAPHIC)



FEB 04 1986
MOUNTAIN LAKES LIBRARY

Mapped, edited, and published by the Geological Survey
Control by USGS and USC&GS
Topography by photogrammetric methods from aerial photographs taken 1962. Field checked 1963
Polyconic projection. 1927 North American datum
10,000-foot grid based on Colorado coordinate system, south zone
1000-meter Universal Transverse Mercator grid ticks, zone 13, shown in blue
Certain land lines are omitted because of insufficient data



THIS MAP COMPLIES WITH NATIONAL MAP ACCURACY STANDARDS
FOR SALE BY U.S. GEOLOGICAL SURVEY, DENVER, COLORADO 80225, OR WASHINGTON, D. C. 20242
A FOLDER DESCRIBING TOPOGRAPHIC MAPS AND SYMBOLS IS AVAILABLE ON REQUEST



MINERAL MOUNTAIN, COLO.
N3800-W10700/7.5
1963
AMS 4560 II SE-SERIES V877

OFFICE COPY

G 3701
C222
S24
U5