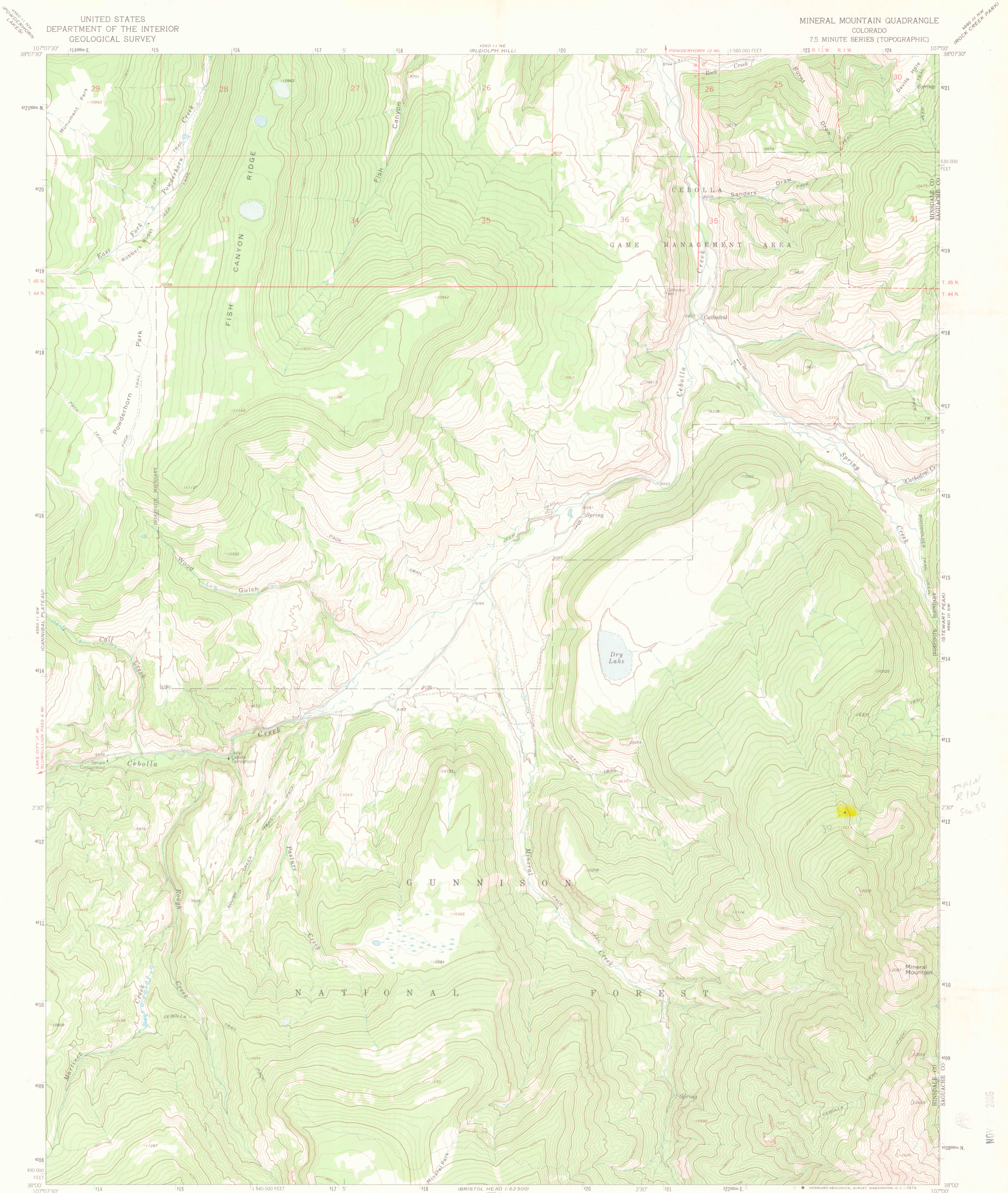
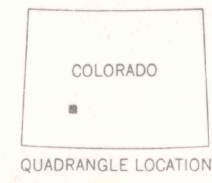
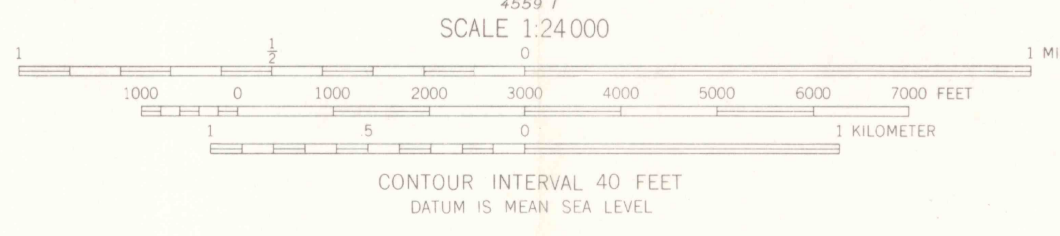
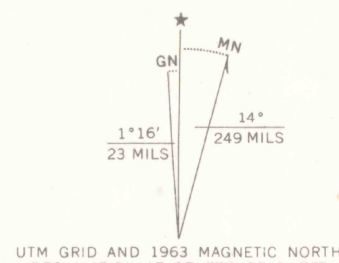


UNITED STATES
DEPARTMENT OF THE INTERIOR
GEOLOGICAL SURVEY

MINERAL MOUNTAIN QUADRANGLE
COLORADO
7.5 MINUTE SERIES (TOPOGRAPHIC)



Mapped, edited, and published by the Geological Survey
Control by USGS and USC&GS
Topography by photogrammetric methods from aerial photographs taken 1962. Field checked 1963
Polyconic projection: 1927 North American datum, 10,000-foot grid based on Colorado coordinate system, south zone 1000 meter Universal Transverse Mercator grid ticks, zone 13, shown in blue
Certain land lines are omitted because of insufficient data



ROAD CLASSIFICATION
Light-duty ————— Unimproved dirt - - - - -

318
MINERAL MOUNTAIN, COLO.
N3800-W10700/7.5

THIS MAP COMPLIES WITH NATIONAL MAP ACCURACY STANDARDS
FOR SALE BY U.S. GEOLOGICAL SURVEY, DENVER, COLORADO 80225, OR WASHINGTON, D.C. 20242
A FOLDER DESCRIBING TOPOGRAPHIC MAPS AND SYMBOLS IS AVAILABLE ON REQUEST

1963
AMS 4560 11 SE-SERIES V877

T.H.H.
R1W
Sec 30

NOV 2006

ART. COLC.

1:62,500

MAP ROOM