

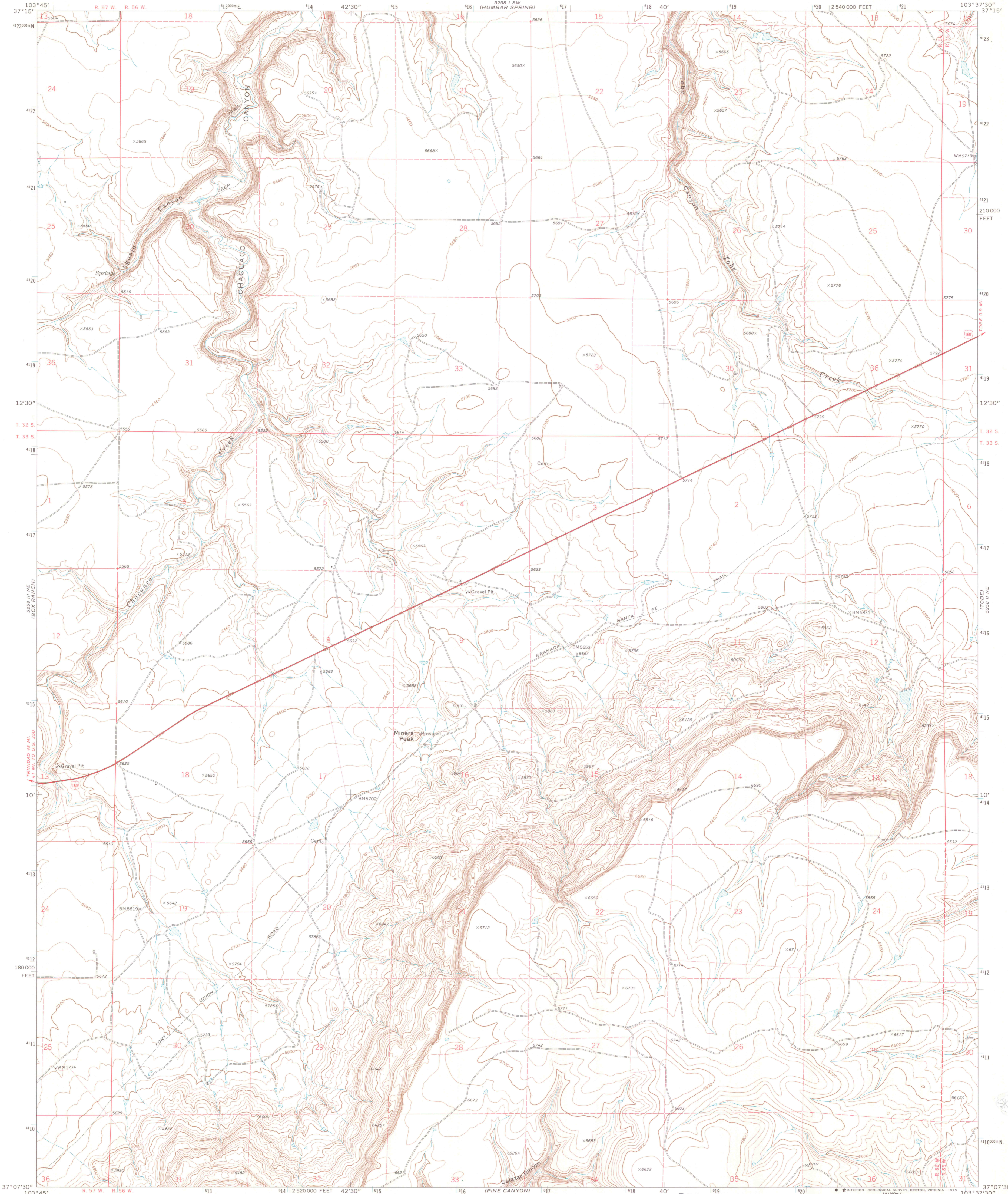
I 19.213 : C71/M669

SOUTHWEST MISSOURI STATE UNIVERSITY LIBRARY U. S. DEPOSITORY COPY

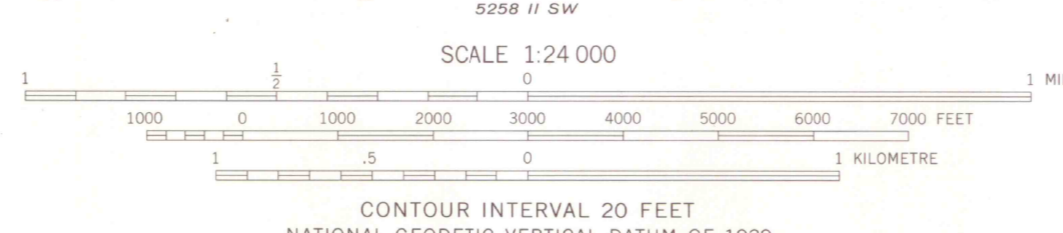
UNITED STATES DEPARTMENT OF THE INTERIOR GEOLOGICAL SURVEY

DEC 1 5 1975

MINERS PEAK QUADRANGLE COLORADO-LAS ANIMAS CO. 7.5 MINUTE SERIES (TOPOGRAPHIC)



Mapped, edited, and published by the Geological Survey Control by USGS and NOS/NOAA Topography by photogrammetric methods from aerial photographs taken 1971. Field checked 1972 Projection and 10,000-foot grid ticks: Colorado coordinate system, south zone (Lambert conformal conic) 1000-metre Universal Transverse Mercator grid ticks, zone 13, shown in blue. 1927 North American datum Fine red dashed lines indicate selected fence lines



SMSU MAP LIBRARY ROAD CLASSIFICATION Legend: Primary highway, hard surface; Light-duty road, hard or improved surface; Secondary highway, hard surface; Unimproved road; Interstate Route; U. S. Route; State Route

S.M.S. LIBRARY

THIS MAP COMPLIES WITH NATIONAL MAP ACCURACY STANDARDS FOR SALE BY U.S. GEOLOGICAL SURVEY, DENVER, COLORADO 80225, OR RESTON, VIRGINIA 22092 A FOLDER DESCRIBING TOPOGRAPHIC MAPS AND SYMBOLS IS AVAILABLE ON REQUEST

MINERS PEAK, COLO. N3707.5-W10337.5/7.5

G 3700 G s24 H310 .G4 s24 MAP ROOM

BRANSON SE

NOV 2 0 2003

COLEBY MESA NORTH

COLEBY MESA NORTH

COLEBY MESA NORTH