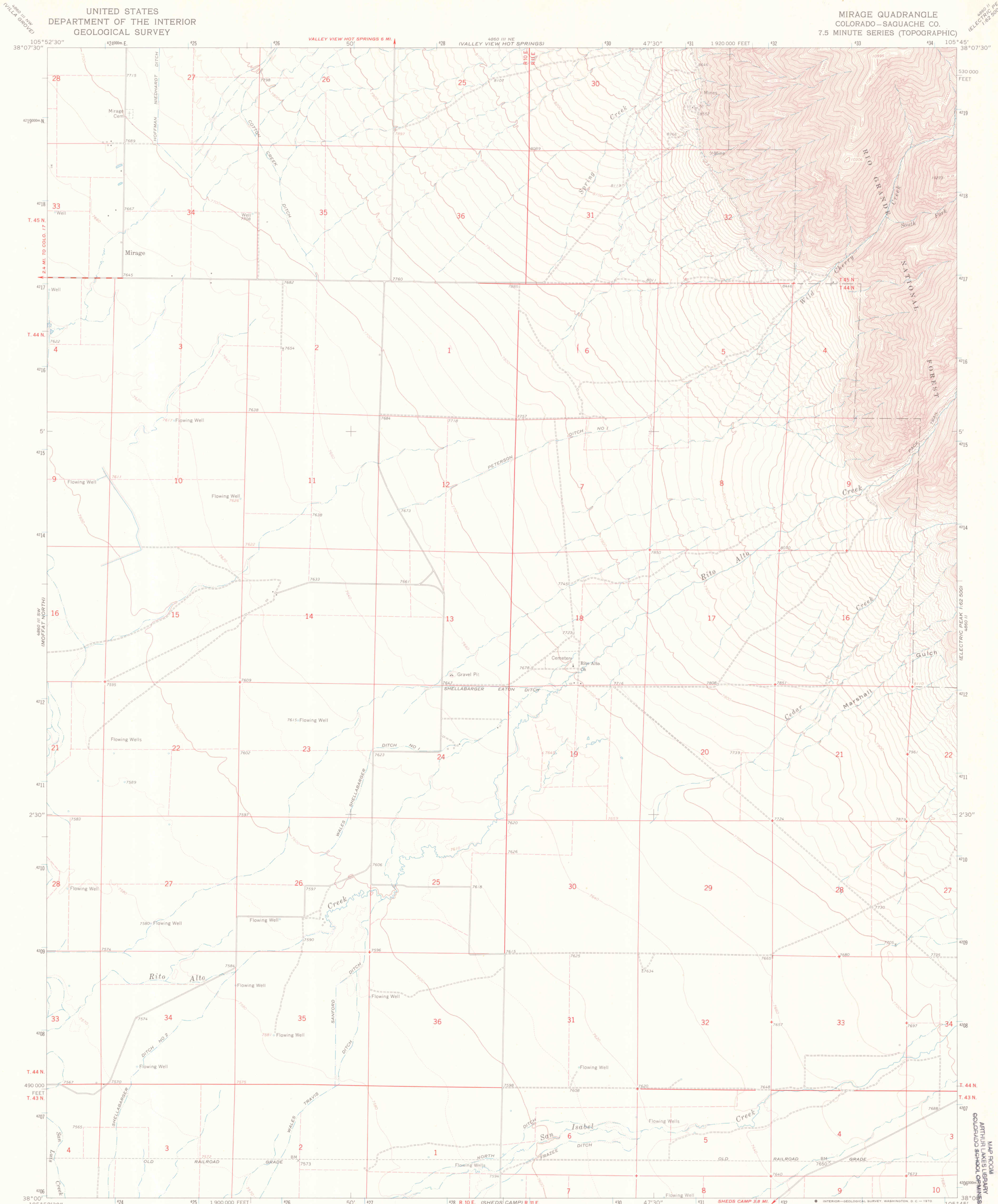
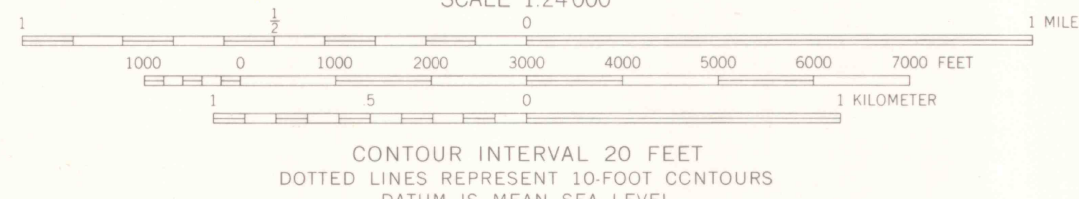
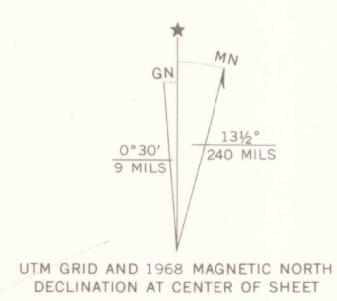


UNITED STATES  
DEPARTMENT OF THE INTERIOR  
GEOLOGICAL SURVEY

MIRAGE QUADRANGLE  
COLORADO—SAGUACHE CO.  
7.5 MINUTE SERIES (TOPOGRAPHIC)



Mapped, edited, and published by the Geological Survey  
Control by USGS and USC&GS  
Topography by photogrammetric methods from aerial  
photographs taken 1966. Field checked 1968  
Polyconic projection, 1927 North American datum,  
10,000-foot grid based on Colorado coordinate system,  
south zone  
1000-meter Universal Transverse Mercator grid ticks,  
zone 13, shown in blue  
Fine red dashed lines indicate selected fence lines  
Certain land lines are omitted because of insufficient data



CONTOUR INTERVAL 20 FEET  
DOTTED LINES REPRESENT 10-FOOT CONTOURS  
DATUM IS MEAN SEA LEVEL



ROAD CLASSIFICATION  
Secondary highway, all weather, Light-duty road, all weather,  
hard surface improved surface  
Unimproved road, fair or dry  
weather

THIS MAP COMPLIES WITH NATIONAL MAP ACCURACY STANDARDS  
FOR SALE BY U.S. GEOLOGICAL SURVEY, DENVER, COLORADO 80225, OR WASHINGTON, D.C. 20242  
A FOLDER DESCRIBING TOPOGRAPHIC MAPS AND SYMBOLS IS AVAILABLE ON REQUEST



MIRAGE, COLO.  
N3800—W10545/7.5

1968

AMS 4860 III SE—SERIES V877

AUG 27 1998  
MAP ROOM  
ARTHUR H. HESSEL LIBRARY  
GOLDEN, COLORADO  
LIBRARY USE ONLY  
3701  
C222  
24  
US