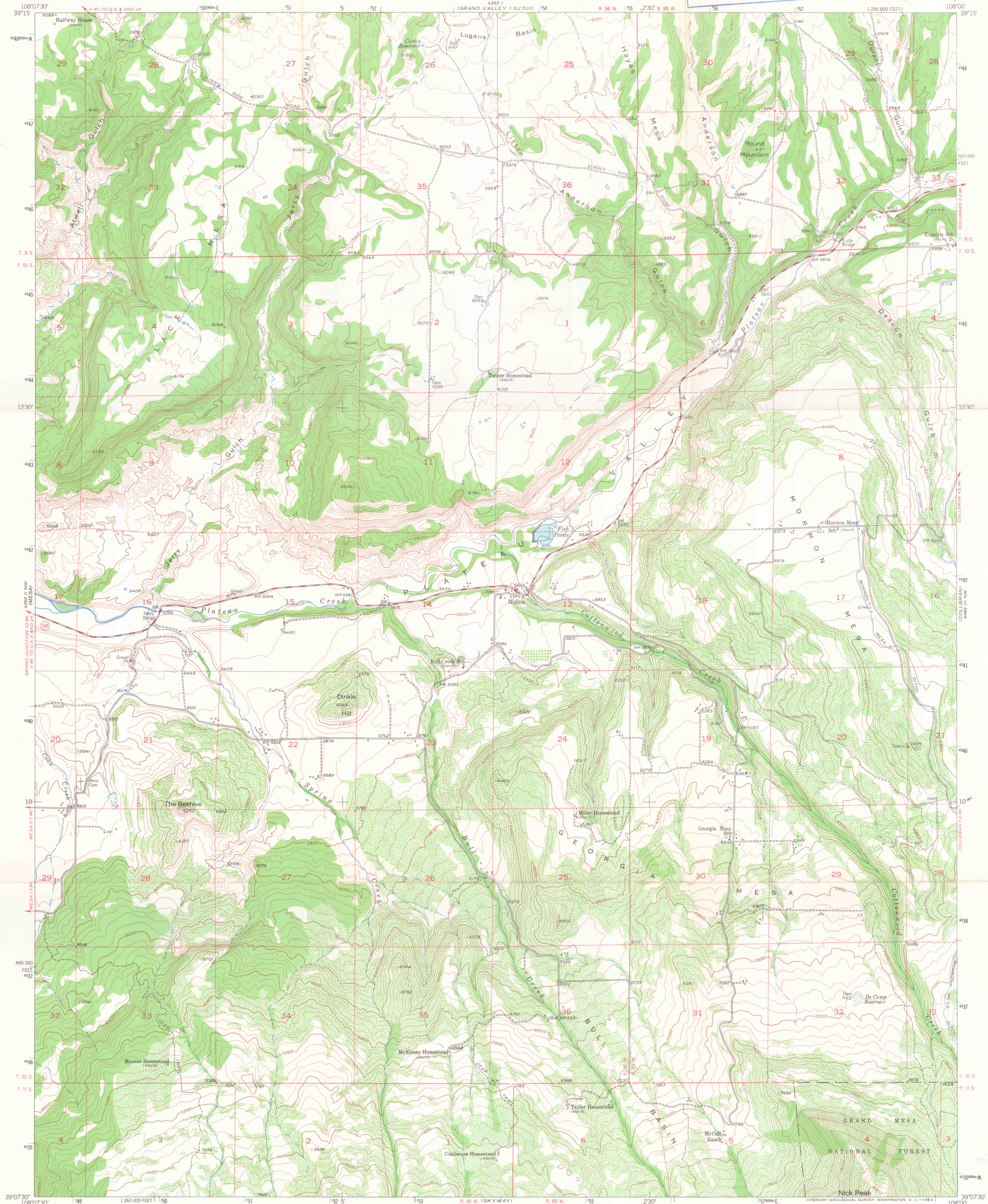


UNITED STATES
DEPARTMENT OF THE INTERIOR
GEOLOGICAL SURVEY

ALPINE RESCUE TEAM, INC.
P.O. BOX 934 • EVERETT, COLO. • 80439
(303) 534-4337

MOLINA QUADRANGLE
COLORADO-MESA CO.
7.5 MINUTE SERIES (TOPOGRAPHIC)

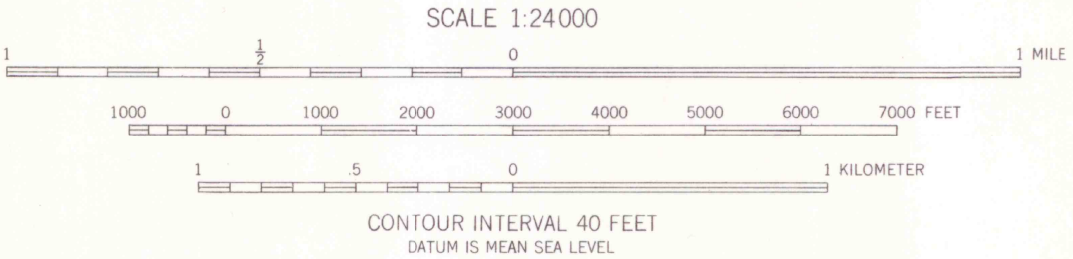
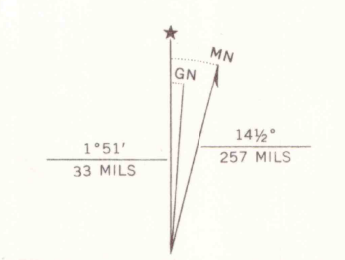


Mapped, edited, and published by the Geological Survey
Control by USGS and USC&GS

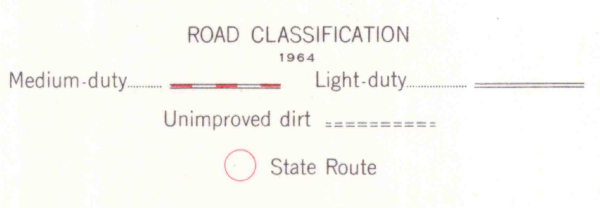
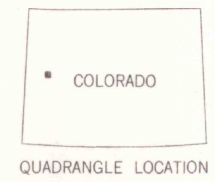
Topography from aerial photographs by multiplex methods
Aerial photographs taken 1951. Field check 1955

Polyconic projection. 1927 North American datum
10,000-foot grid based on Colorado coordinate system,
central zone

Dashed land lines indicate approximate locations
1000-meter Universal Transverse Mercator grid ticks,
zone 12, shown in blue



CONTOUR INTERVAL 40 FEET
DATUM IS MEAN SEA LEVEL



MOLINA, COLO.
N3907.5-W10800/7.5

1955
AMS 4362 II NE-SERIES V877

THIS MAP COMPLIES WITH NATIONAL MAP ACCURACY STANDARDS
FOR SALE BY U. S. GEOLOGICAL SURVEY, DENVER 25, COLORADO OR WASHINGTON 25, D. C.
A FOLDER DESCRIBING TOPOGRAPHIC MAPS AND SYMBOLS IS AVAILABLE ON REQUEST

DEC 1 2006

PHOTO: LARRY DUNN
COLORADO SCHOOL OF MINES

700
MAP ROOM