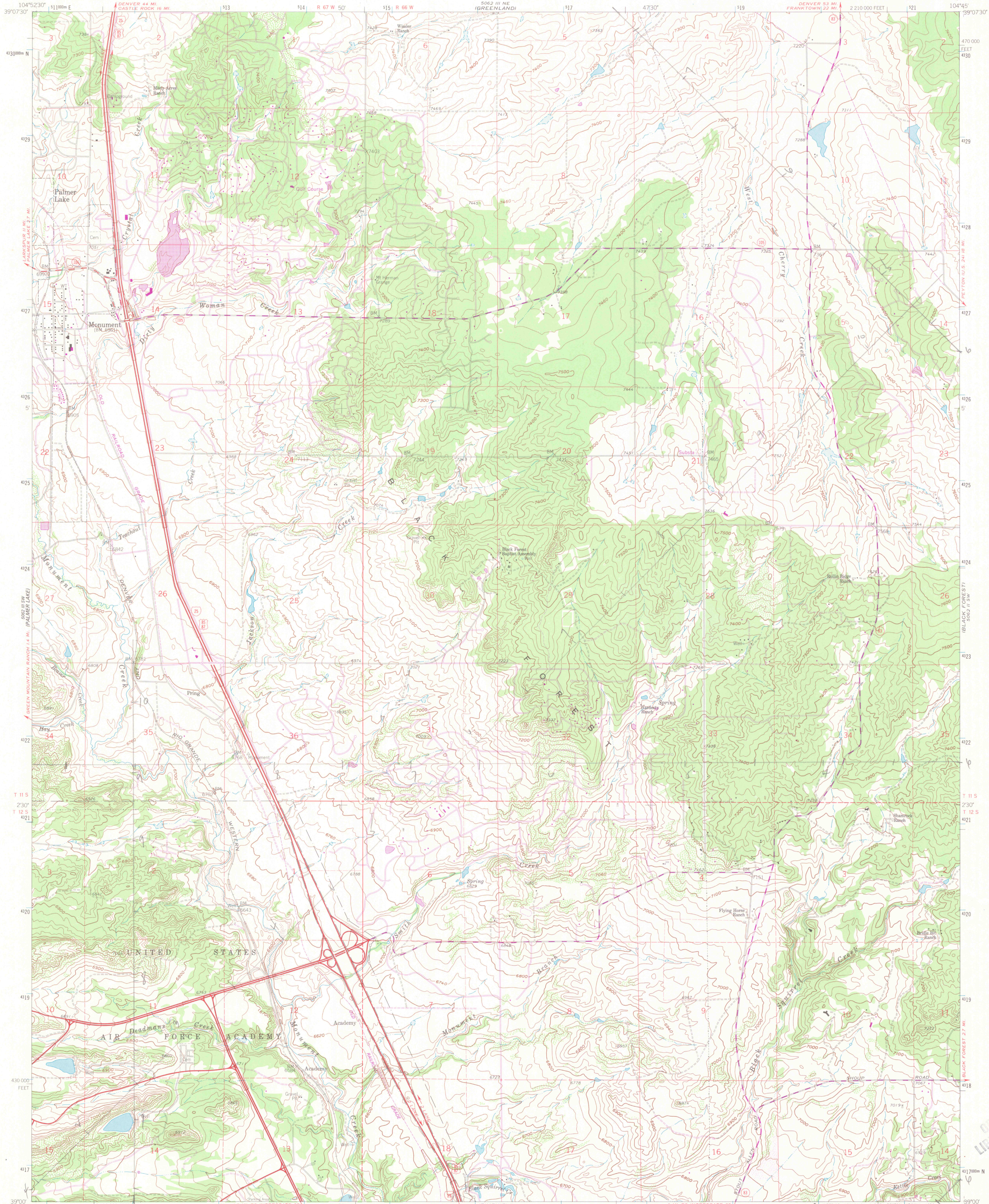


UNITED STATES
DEPARTMENT OF THE INTERIOR
GEOLOGICAL SURVEY

MONUMENT QUADRANGLE
COLORADO-EL PASO CO.
7.5 MINUTE SERIES (TOPOGRAPHIC)



Mapped, edited, and published by the Geological Survey
in cooperation with U. S. Corps of Engineers

Control by USGS and NOS/NOAA

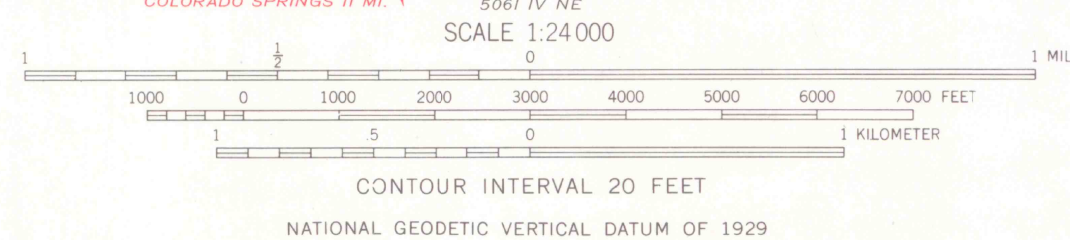
Topography by photogrammetric methods from aerial photographs
taken 1952. Field checked 1954. Revised from aerial photographs
taken 1960. Field checked 1961

Polyconic projection. 1927 North American datum
10,000-foot grid based on Colorado coordinate system, central zone
1000-meter Universal Transverse Mercator grid ticks,
zone 13, shown in blue

Fine red dashed lines indicate selected fence and field lines where
generally visible on aerial photographs. This information is unchecked

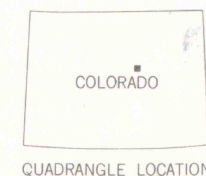
Revisions shown in purple compiled from aerial photographs
taken 1969 and 1975. This information not field checked

To place on the predicted North American Datum 1983
move the projection lines 4 meters north and
47 meters east as shown by dashed corner ticks



ROAD CLASSIFICATION

Heavy-duty ——— Light-duty ———
Medium-duty ——— Unimproved dirt ———
Interstate Route U.S. Route State Route



JAN 15 1998

MONUMENT, COLO.
N3900-W10445/7.5

1961
PHOTOREVISED 1969 AND 1975
DMA 5062 III SE-SERIES V877

OFFICE COPY
LIBRARY USE ONLY

MAP ROOM