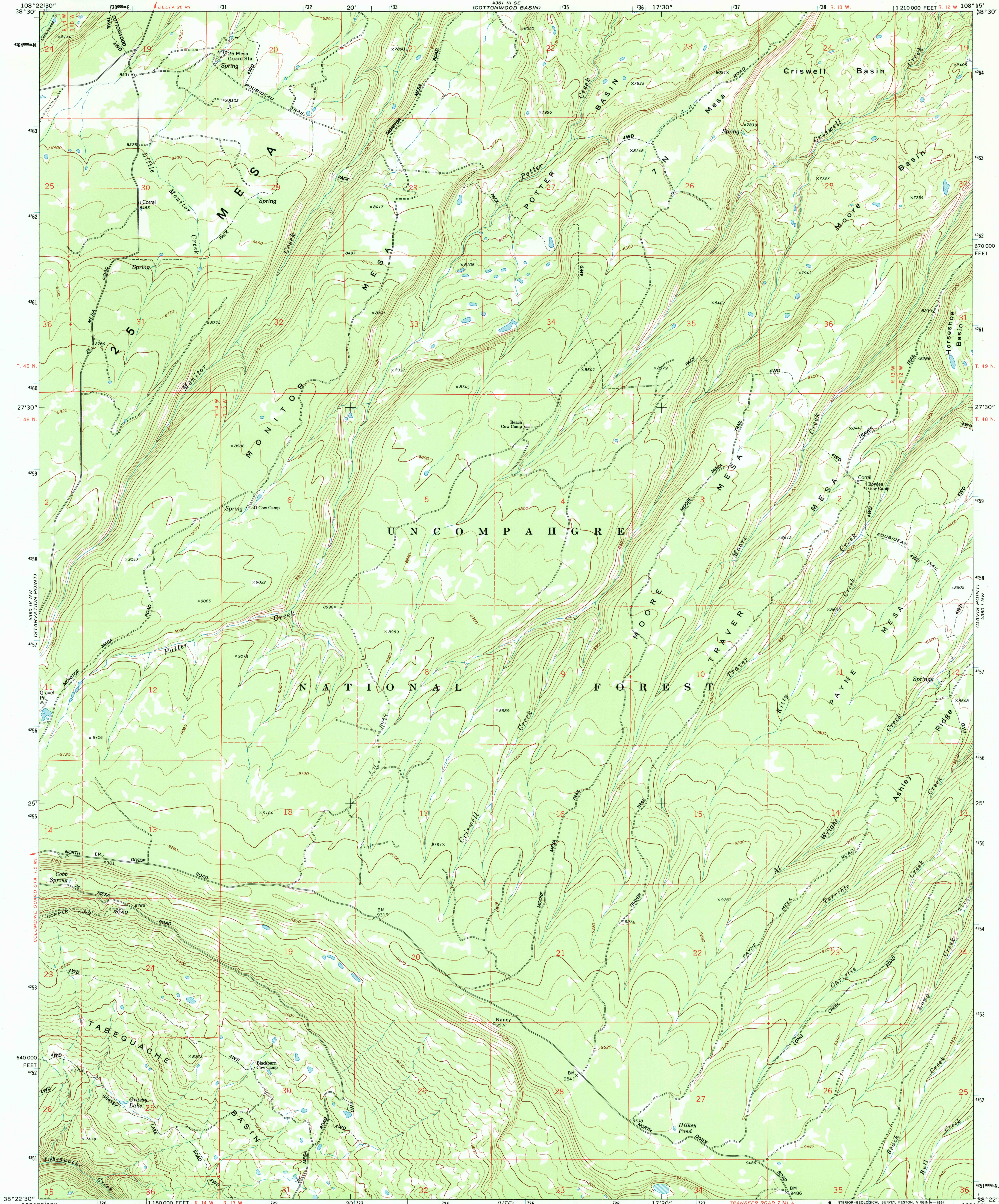
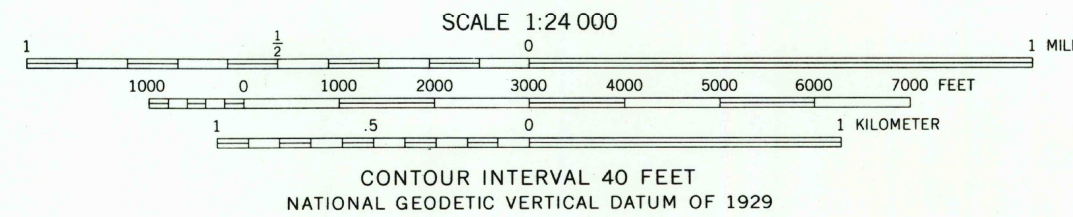
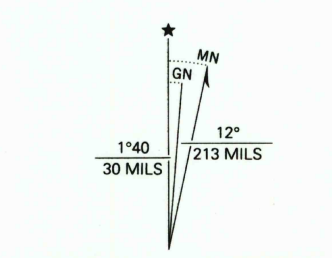


UNITED STATES
DEPARTMENT OF THE INTERIOR
GEOLOGICAL SURVEY

MOORE MESA QUADRANGLE
COLORADO—MONTROSE CO
7.5 MINUTE SERIES (TOPOGRAPHIC)



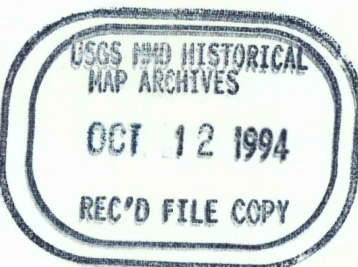
Mapped by the U.S. Forest Service
Produced by the United States Geological Survey
Control by USGS and NOS/NOAA
Compiled from aerial photographs taken 1964. Revised from aerial
photographs taken 1988 and other sources. Field checked 1990
Map edited 1994
North American Datum of 1927 (NAD 27). Projection and
10000-foot ticks: Colorado Coordinate System, south zone
(Lambert Conformal Conic)
Blue 1000-meter Universal Transverse Mercator ticks, zone 12
North American Datum of 1983 (NAD 83) is shown by dashed
corner ticks. The values of the shift between NAD 27 and NAD 83
for 7.5-minute intersections are obtainable from National Geodetic
Survey NADCON software
There may be private inholdings within the boundaries of the
National or State reservations shown on this map
Fine red dashed lines indicate selected fence and field lines where
generally visible on aerial photographs. This information is unchecked



COMPLIES WITH U.S. GEOLOGICAL SURVEY STANDARD FOR SPATIAL ACCURACY (HORIZONTAL), CLASS 2
NOT TESTED FOR COMPLIANCE WITH U.S. GEOLOGICAL SURVEY STANDARD FOR SPATIAL ACCURACY (VERTICAL)
FOR SALE BY U.S. GEOLOGICAL SURVEY
DENVER, COLORADO 80225, OR RESTON, VIRGINIA 22092
A FOLDER DESCRIBING TOPOGRAPHIC MAPS AND SYMBOLS IS AVAILABLE ON REQUEST



ROAD CLASSIFICATION	
Primary highway, hard surface	Light-duty road, hard or improved surface
Secondary highway, hard surface	Unimproved road
Interstate Route	U.S. Route
	State Route



MOORE MESA, COLO.
38108-D3-TF-024
1994
DMA 4360 IV NE-SERIES V877