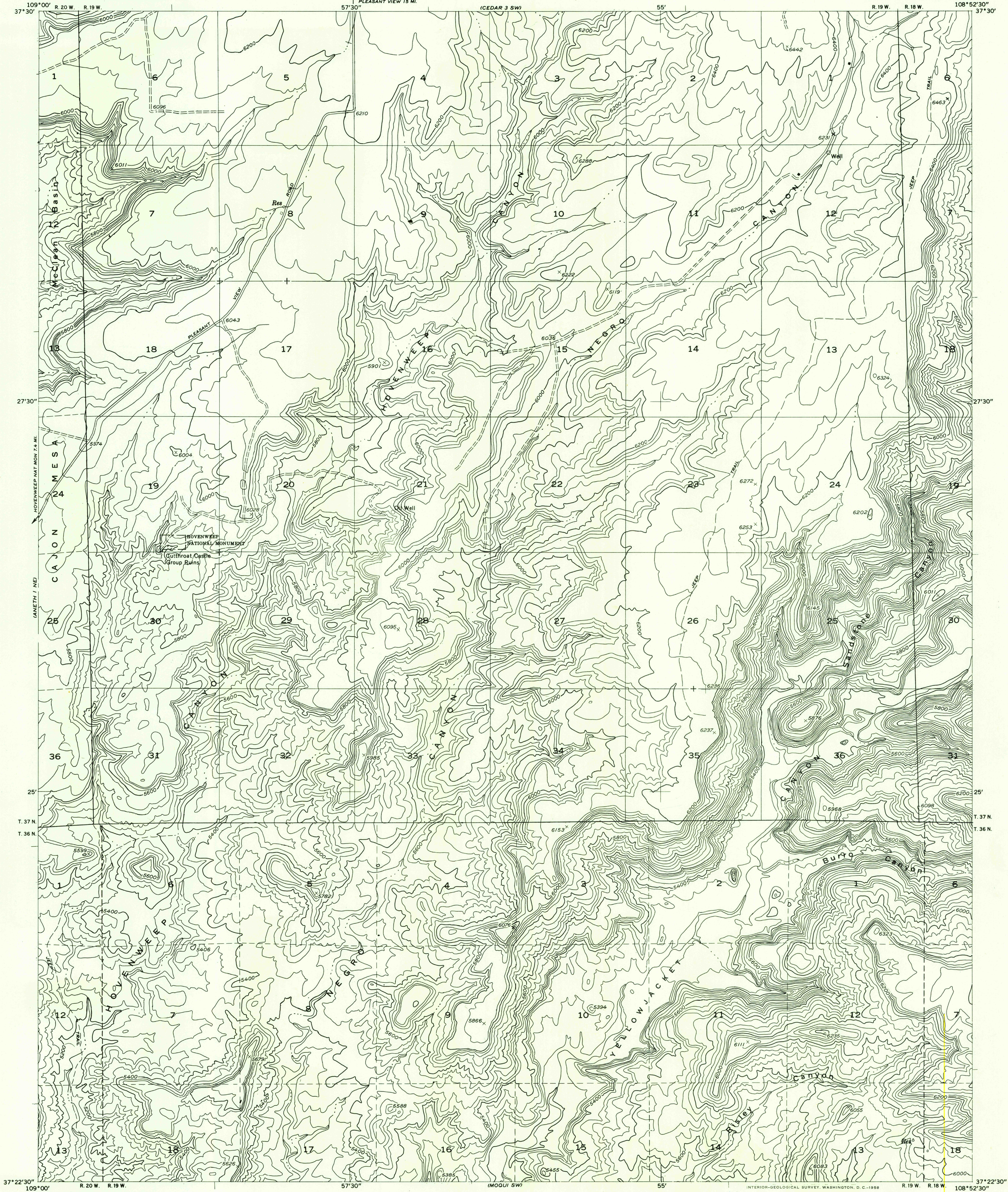


NEEDURE 5 SE

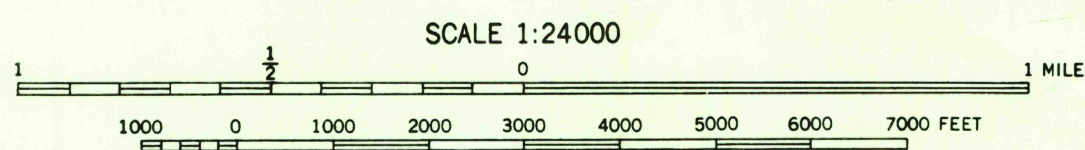
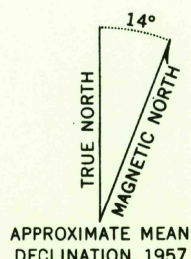
DEPARTMENT OF THE INTERIOR
GEOLOGICAL SURVEY

Preliminary edition
Pending completion of 1:62 500 scale
15 minute maps covering this area

MOQUI NW QUADRANGLE
COLORADO—MONTEZUMA CO.



Mapped by the Geological Survey 1957
Topography by Ketch plotter from
aerial photographs taken 1955
Dashed land lines indicate approximate locations
Symbols and other detail herein
drawn for 1:62 500 scale publication



CONTOUR INTERVAL 40 FEET
DATUM IS MEAN SEA LEVEL

U.S.G.S.
Historical File
Topographic

ROAD CLASSIFICATION
Improved ——— Unimproved - - - - -

U.S.G.S.
FILE COPY
TOPOGRAPHIC DIVISION

MOQUI NW, COLO.
N3722.5—W10852.5/7.5

JUL 15 1958

1965