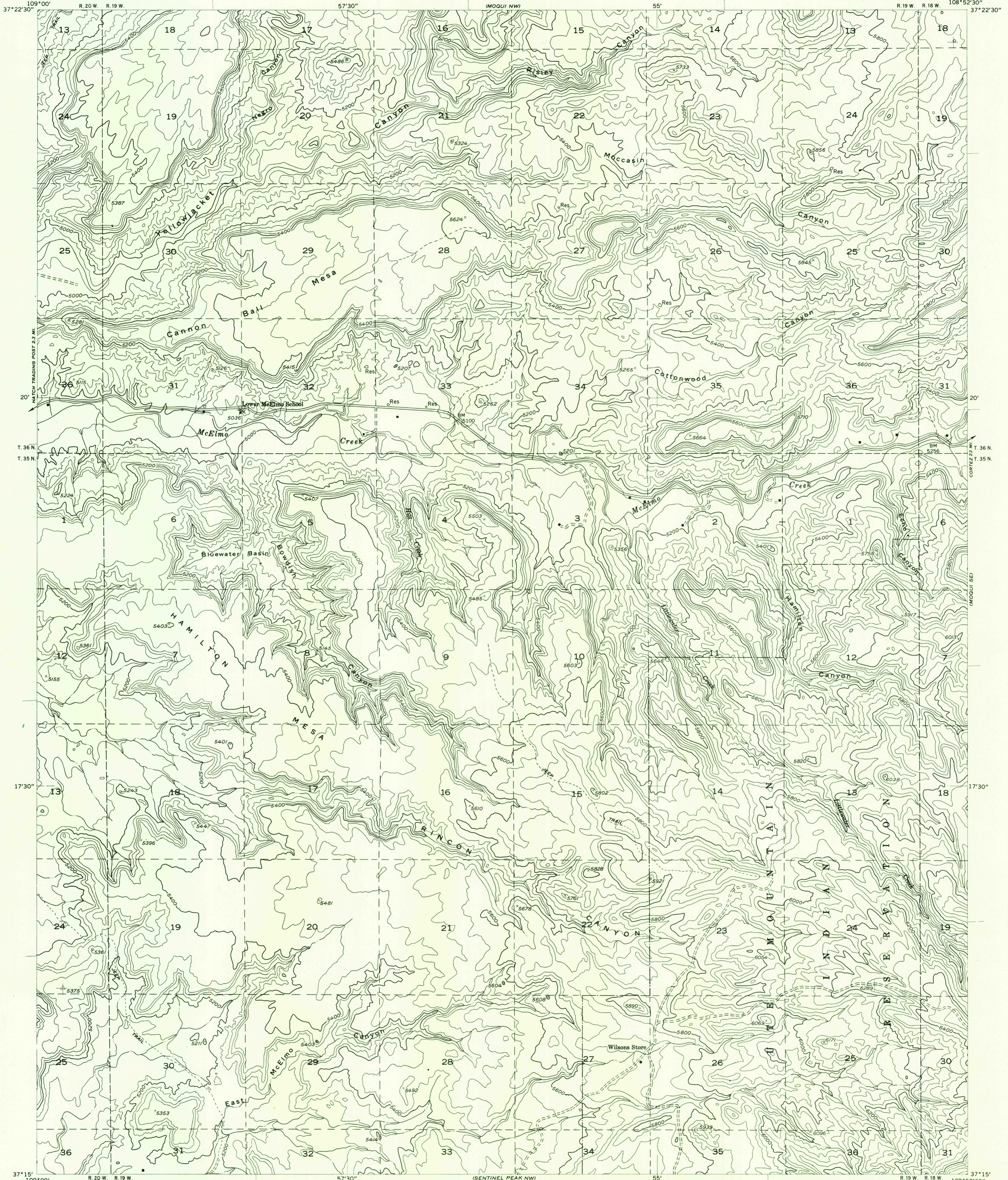
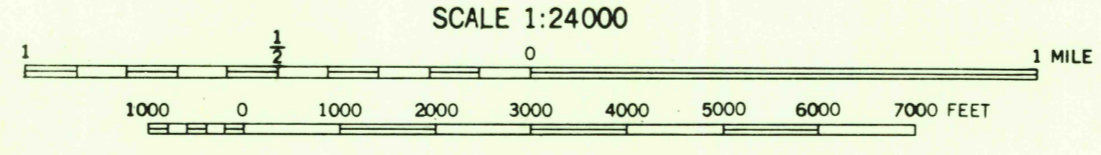
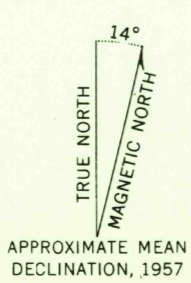


Preliminary edition
Pending completion of 1:62,500 scale
15 minute maps covering this area



Mapped by the Geological Survey 1957

Topography by Kesh plotter from
aerial photographs taken 1955
Dashed land lines indicate approximate locations
Symbols and other detail herein
drawn for 1:62,500 scale publication



CONTOUR INTERVAL 40 FEET
DATUM IS MEAN SEA LEVEL

INTERIOR-GEOLOGICAL SURVEY, WASHINGTON, D. C.—1958
ROAD CLASSIFICATION
Improved ——— Unimproved - - - - -

USGS
Historical File
Topographic Division

U.S.G.S.
FILE COPY
TOPOGRAPHIC DIVISION

MOQUI SW, COLO.
N3715—W10852.5/7.5

JUL 15 1958
1965