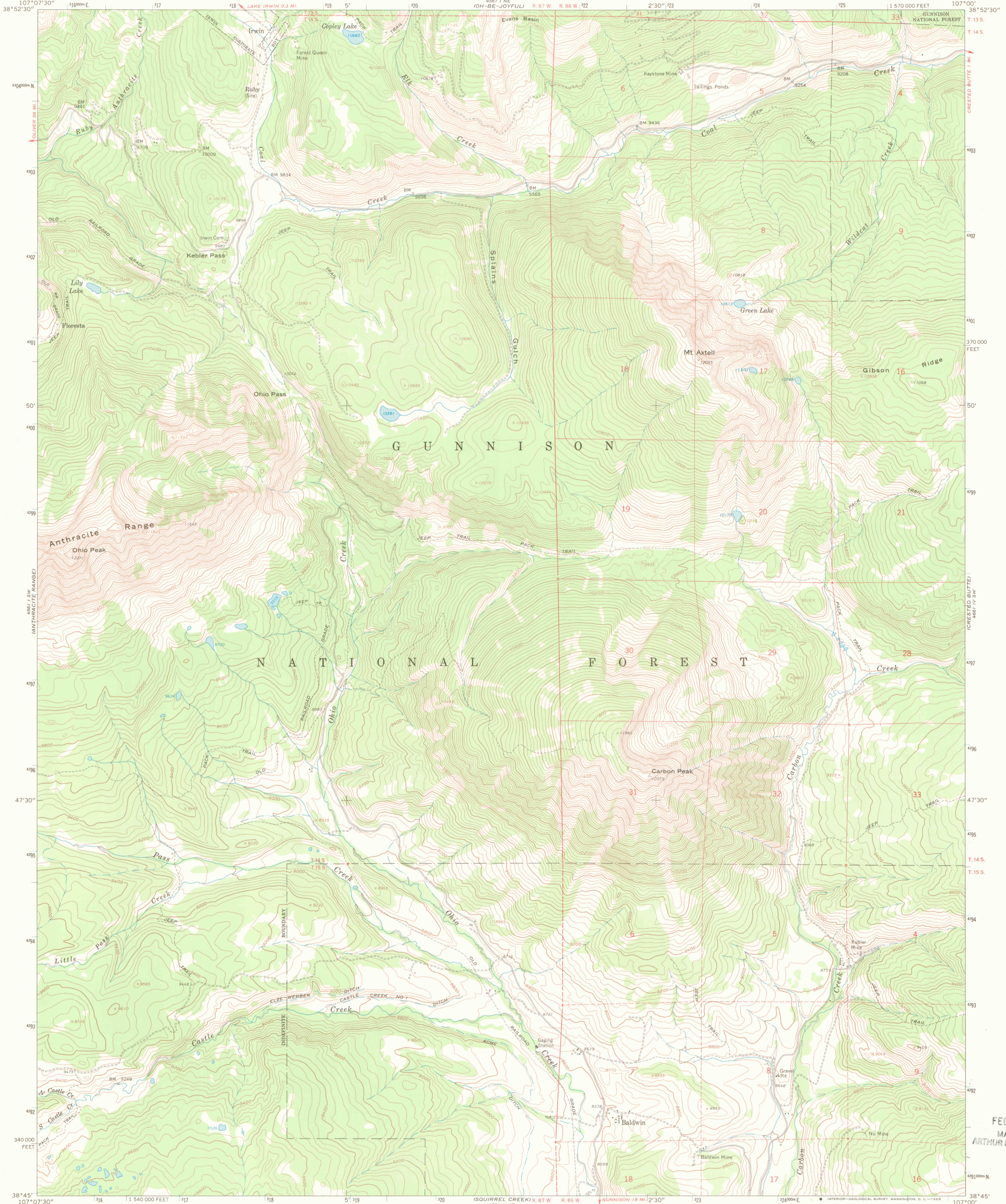
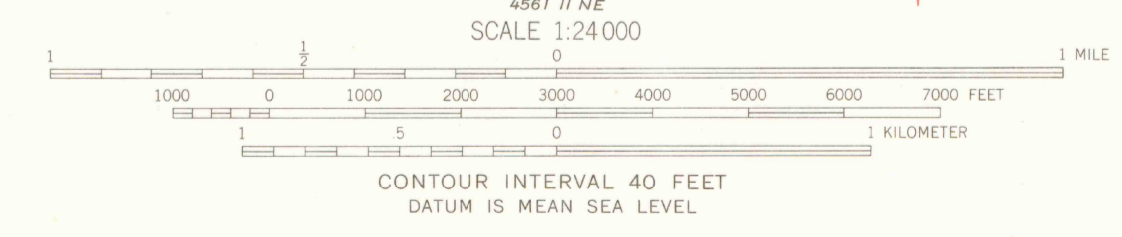
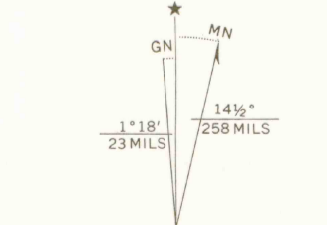


MONTROSE 20



Mapped, edited, and published by the Geological Survey  
Control by USGS and USC&GS  
Topography by photogrammetric methods from aerial  
photographs taken 1958. Field checked 1961  
Polyconic projection. 1927 North American datum  
10,000-foot grid based on Colorado coordinate system, central zone  
1000-meter Universal Transverse Mercator grid ticks,  
zone 13, shown in blue  
Certain land lines are omitted because of insufficient data



ROAD CLASSIFICATION  
Light-duty ——— Unimproved dirt - - - - -

THIS MAP COMPLIES WITH NATIONAL MAP ACCURACY STANDARDS  
FOR SALE BY U. S. GEOLOGICAL SURVEY, DENVER, COLORADO 80225 OR WASHINGTON, D. C. 20242  
A FOLDER DESCRIBING TOPOGRAPHIC MAPS AND SYMBOLS IS AVAILABLE ON REQUEST



OFFICE COPY  
LIBRARY USE ONLY  
OFFICE C  
Rocky Mtn. District

MT. AXTELL, COLO.  
SE/4 ANTHRACITE 15' QUADRANGLE  
N3845—W10700/7.5  
1961  
AMS 4561 I SE—SERIES V877

FEB 0 4 1966  
MAP ROOM  
ARTHUR LAKES LIBRARY

G 3700  
s24  
.G4  
MAP ROOM  
101  
227  
s24  
05