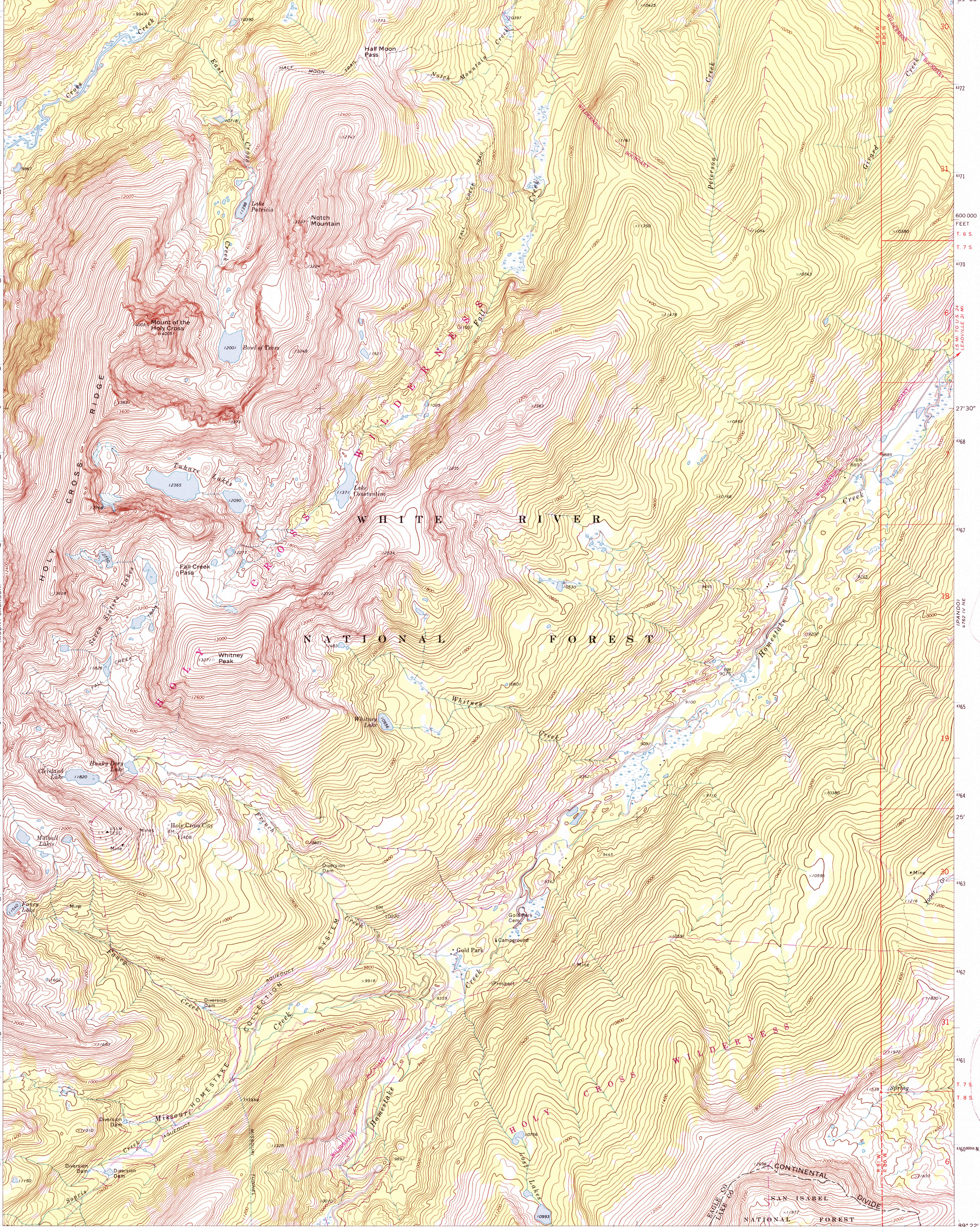


UNITED STATES
DEPARTMENT OF THE INTERIOR
GEOLOGICAL SURVEY

MOUNT OF THE HOLY CROSS QUADRANGLE
COLORADO
7.5 MINUTE SERIES (TOPOGRAPHIC)

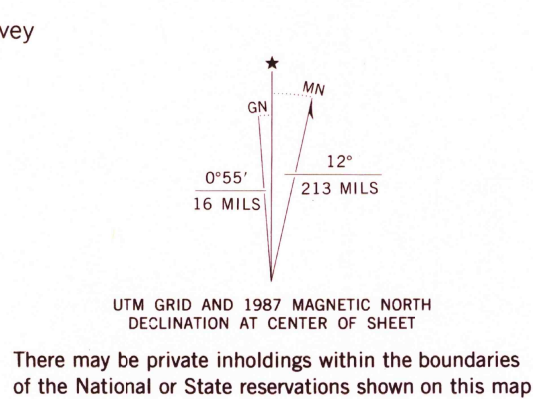
106° 30' 39° 30' 172 173 174 27° 30' 175 176 4763 III SW (MINTURN) 178 25' 179 180 1750 000 FEET 181 106° 22' 30' 39° 30'



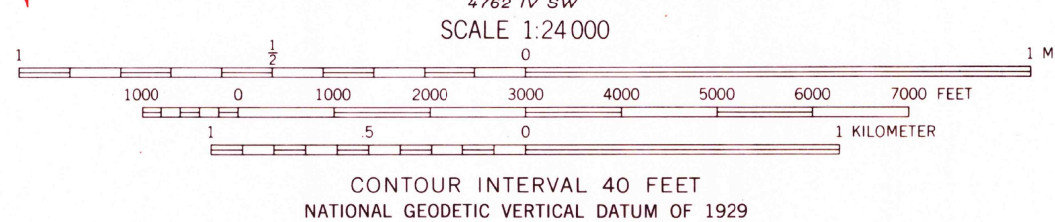
Mapped, edited, and published by the Geological Survey

Control by USGS and NOS/NOAA
Topography by photogrammetric methods from aerial photographs taken 1968. Field checked 1970
Polyconic projection. 1927 North American Datum 10,000-foot grid based on Colorado coordinate system, central zone
1000-meter Universal Transverse Mercator grid ticks, zone 13, shown in blue

Where omitted, land lines have not been established or are not shown because of insufficient data
To place on the predicted North American Datum 1983 move the projection lines 5 meters north and 51 meters east as shown by dashed corner ticks



There may be private inholdings within the boundaries of the National or State reservations shown on this map



THIS MAP COMPLIES WITH NATIONAL MAP ACCURACY STANDARDS
FOR SALE BY U. S. GEOLOGICAL SURVEY
DENVER, COLORADO 80225, OR RESTON, VIRGINIA 22092
A FOLDER DESCRIBING TOPOGRAPHIC MAPS AND SYMBOLS IS AVAILABLE ON REQUEST



QUADRANGLE LOCATION

ROAD CLASSIFICATION	
Primary highway, hard surface	Light-duty road, hard or improved surface
Secondary highway, hard surface	Unimproved road
Interstate Route	U. S. Route
	State Route

MOUNT OF THE HOLY CROSS, COLO.
NW 1/4 HOLY CROSS 15' QUADRANGLE
39106-04-TF-024

1970
PHOTOREVISED 1987
DMA 4762 IV NW—SERIES V877

NEED FILE COPY
JUN 10 1988
U.S. GEOLOGICAL SURVEY