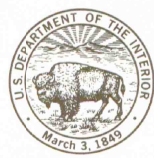
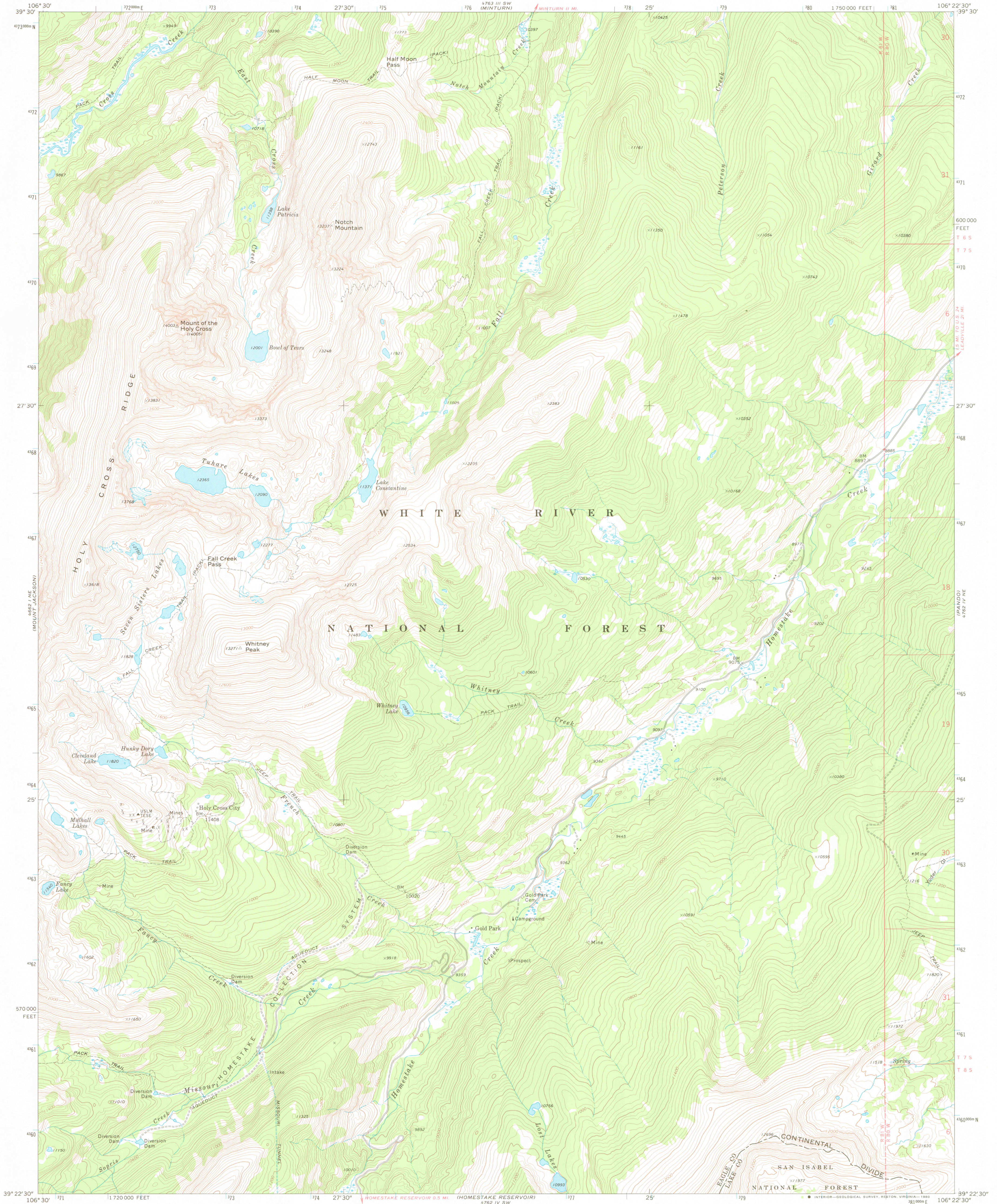


UNITED STATES
DEPARTMENT OF THE INTERIOR
GEOLOGICAL SURVEY



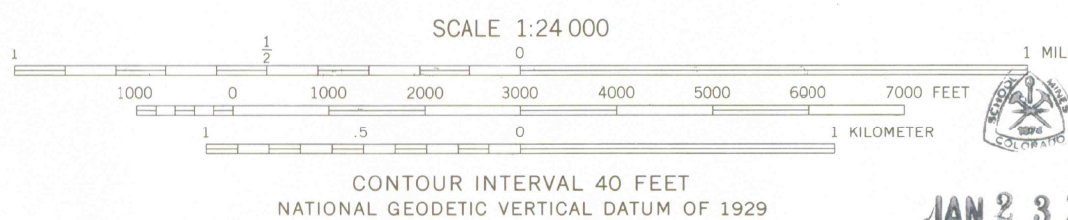
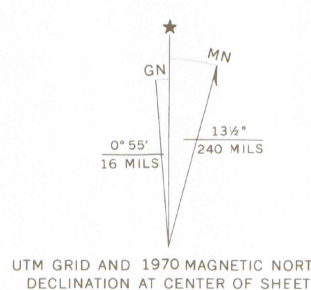
MOUNT OF THE HOLY CROSS QUADRANGLE
COLORADO
7.5 MINUTE SERIES (TOPOGRAPHIC)
NW 1/4 HOLY CROSS 15' QUADRANGLE



Mapped, edited, and published by the Geological Survey

Control by USGS and USC&GS
Topography by photogrammetric methods from aerial photographs taken 1968. Field checked 1970.
Polyconic projection. 1927 North American datum
10,000-foot grid based on Colorado coordinate system, central zone
1000-meter Universal Transverse Mercator grid ticks, zone 13, shown in blue
Where omitted, land lines have not been established or are not shown because of insufficient data
To place on the predicted North American Datum 1983 move the projection lines 5 meters north and 51 meters east as shown by dashed corner ticks

There may be private inholdings within the boundaries of the National or State reservations shown on this map



JAN 23 2006

THIS MAP COMPLIES WITH NATIONAL MAP ACCURACY STANDARDS
FOR SALE BY U. S. GEOLOGICAL SURVEY, DENVER, COLORADO 80225, OR RESTON, VIRGINIA 22092
A FOLDER DESCRIBING TOPOGRAPHIC MAPS AND SYMBOLS IS AVAILABLE ON REQUEST



OFFICE COPY
LIBRARY USE ONLY

ROAD CLASSIFICATION
Primary highway, hard surface ———— Light-duty road, hard or improved surface ————
Secondary highway, hard surface ———— Unimproved road ————
Interstate Route ———— U. S. Route ———— State Route ————

MOUNT OF THE HOLY CROSS, COLO.
NW 1/4 HOLY CROSS 15' QUADRANGLE
N 3922.5—W 10622.5/7.5

1970
DMA 4762 IV NW-SERIES V877

G 3700
824
JG4
MAP ROOM