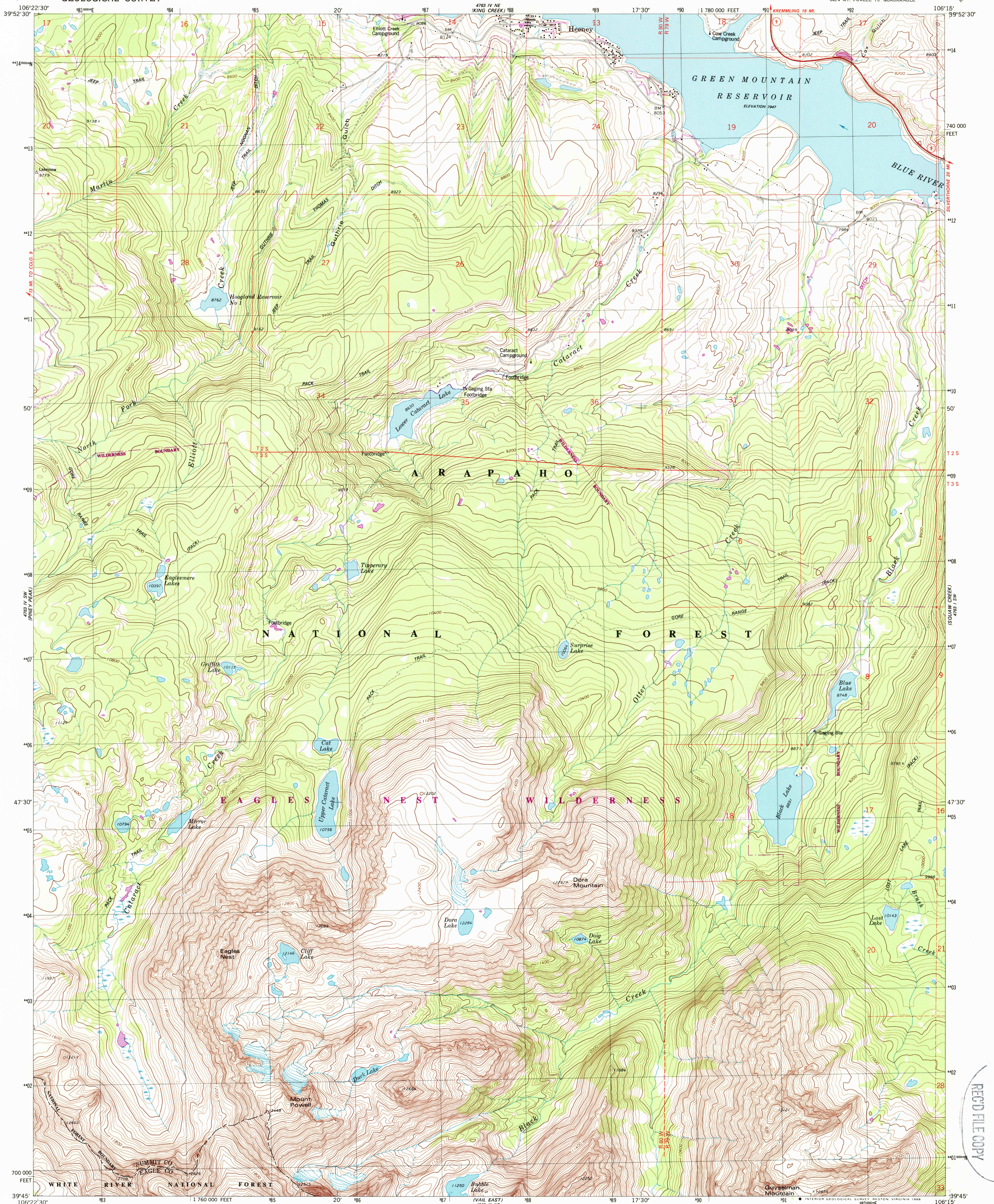
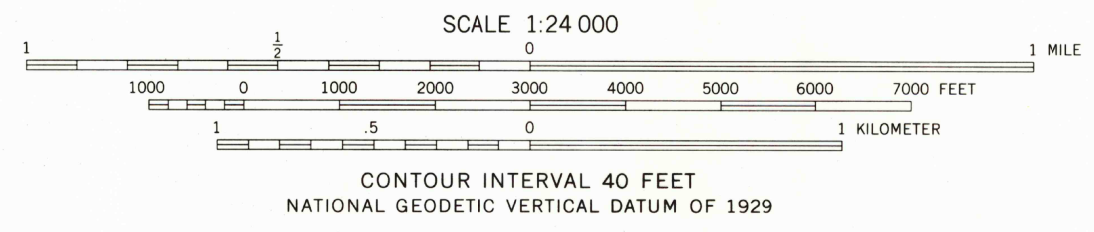
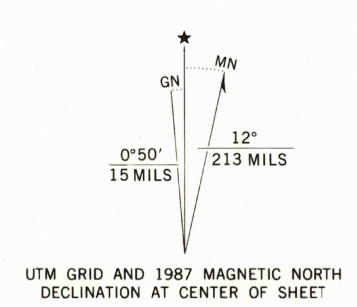


UNITED STATES
DEPARTMENT OF THE INTERIOR
GEOLOGICAL SURVEY

MOUNT POWELL QUADRANGLE
COLORADO
7.5 MINUTE SERIES (TOPOGRAPHIC)
SE/4 MT. POWELL 15' QUADRANGLE



Mapped, edited, and published by the Geological Survey
Control by USGS and NOS/NOAA, and U.S. Forest Service
Topography by photogrammetric methods from aerial photographs taken 1975. Field checked 1976. Map edited 1980
Projection and 10,000-foot grid ticks: Colorado coordinate system, central zone (Lambert conformal conic) 1000-meter Universal Transverse Mercator grid, zone 13 1927 North American Datum
To place on the predicted North American Datum 1983 move the projection lines 5 meters north and 51 meters east as shown by dashed corner ticks
Fine red dashed lines indicate selected fence lines
Where omitted land lines have not been established or are not shown because of insufficient data
There may be private inholdings within the boundaries of the National or State reservations shown on this map



THIS MAP COMPLIES WITH NATIONAL MAP ACCURACY STANDARDS
FOR SALE BY U. S. GEOLOGICAL SURVEY, DENVER, COLORADO 80225, OR RESTON, VIRGINIA 22092
A FOLDER DESCRIBING TOPOGRAPHIC MAPS AND SYMBOLS IS AVAILABLE ON REQUEST



- ROAD CLASSIFICATION
- Primary highway, hard surface
 - Secondary highway, hard surface
 - Unimproved road
 - Light-duty road, hard or improved surface
 - Interstate Route
 - U. S. Route
 - State Route

MOUNT POWELL, COLO.
SE/4 MT. POWELL 15' QUADRANGLE
39106-G3-TF-024

1980
PHOTOREVISED 1987
DMA 4763 IV SE—SERIES V877

USGS AND HISTORICAL MAP
SEP 14 1988
REC'D FILE COPY