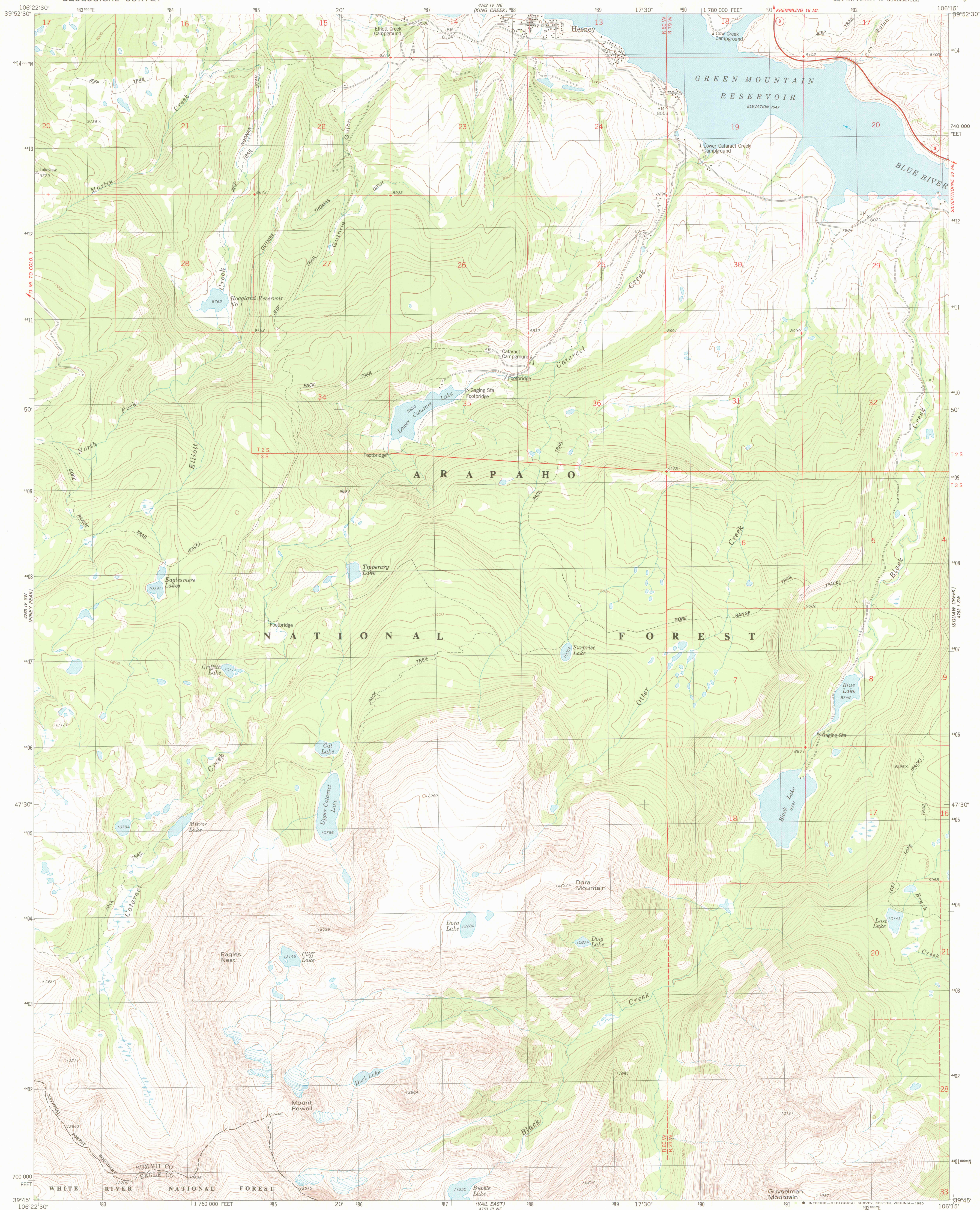
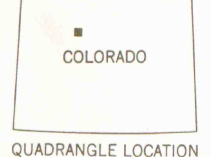
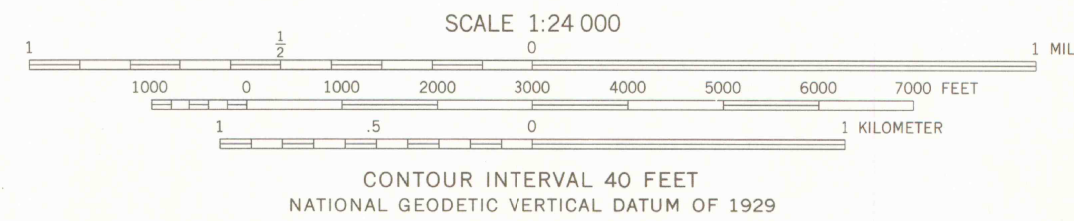
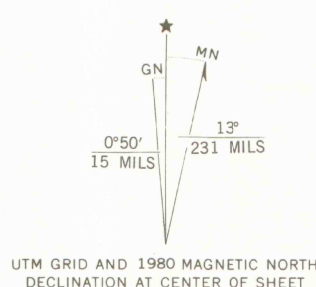


UNITED STATES
DEPARTMENT OF THE INTERIOR
GEOLOGICAL SURVEY

MOUNT POWELL QUADRANGLE
COLORADO
7.5 MINUTE SERIES (TOPOGRAPHIC)



Mapped, edited, and published by the Geological Survey
Control by USGS and NOS/NOAA, and U.S. Forest Service
Topography by photogrammetric methods from aerial photographs
taken 1975. Field checked 1976. Map edited 1980
Projection and 10,000-foot grid ticks: Colorado
coordinate system, central zone (Lambert conformal conic)
1000-meter Universal Transverse Mercator grid, zone 13
1927 North American datum
To place on the predicted North American Datum 1983
move the projection lines 5 meters north and
51 meters east as shown by dashed corner ticks
Fine red dashed lines indicate selected fence lines
Where omitted land lines have not been established
or are not shown because of insufficient data
There may be private inholdings within the boundaries of the
National or State reservations shown on this map



ROAD CLASSIFICATION

Primary highway, hard surface	Light-duty road, hard or improved surface
Secondary highway, hard surface	Unimproved road
Interstate Route	U.S. Route
	State Route

MOUNT POWELL, COLO.
SE/4 MT. POWELL, 15' QUADRANGLE
N3945-W10615/7.5

AUG 21 1980
MAP ROOM
ARTHUR LAKES LIBRARY

DMA 4763 IV SE-SERIES V877
LIBRARY USE ONLY

OFFICE COPY