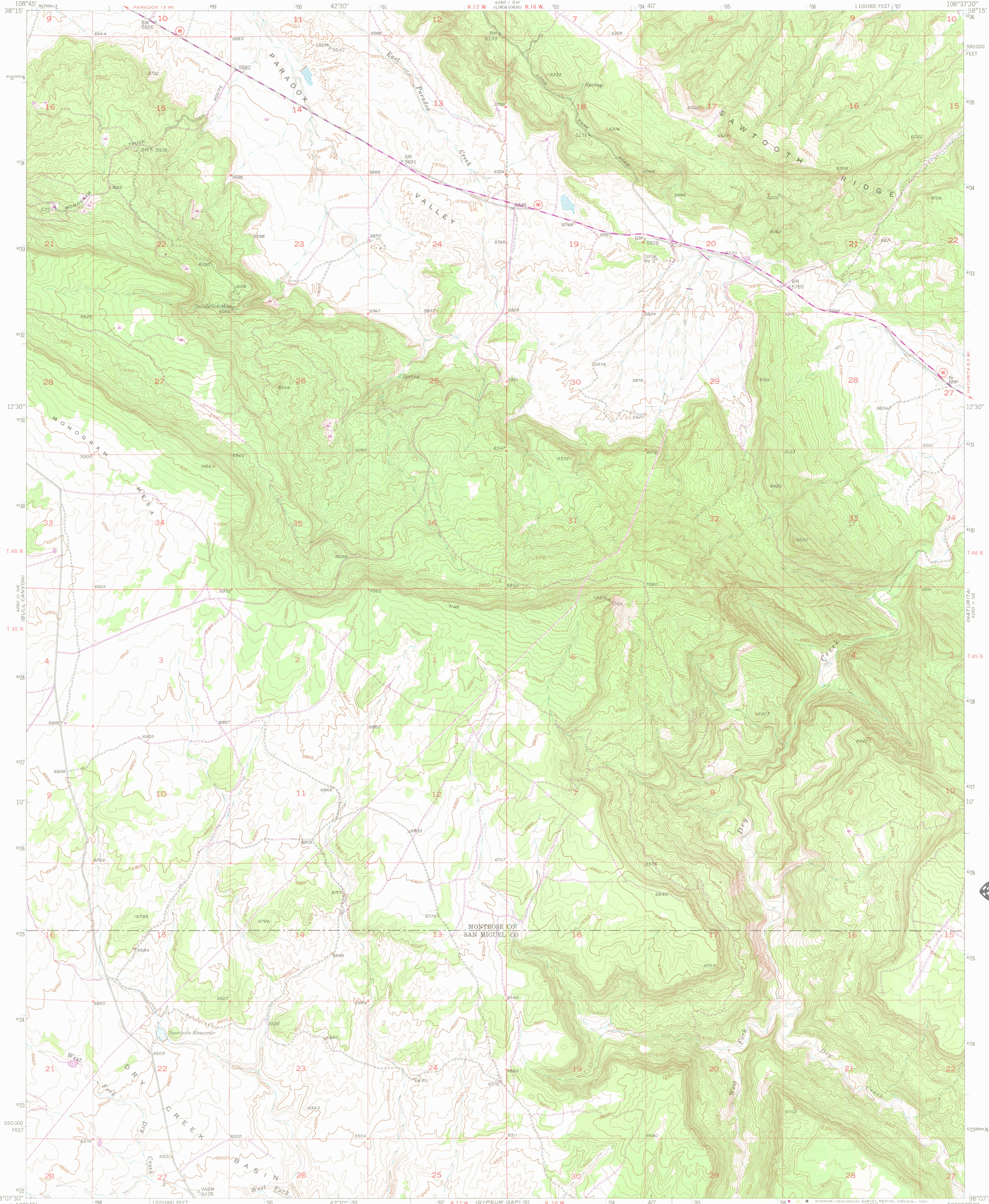
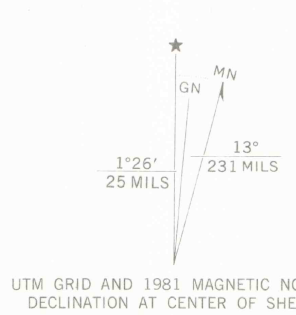


UNITED STATES
DEPARTMENT OF THE INTERIOR
GEOLOGICAL SURVEY

NATURITA NW. QUADRANGLE
COLORADO
7.5 MINUTE SERIES (TOPOGRAPHIC)

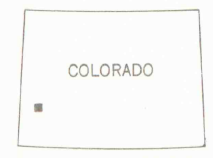


Control by USGS
Topography by photogrammetric methods from aerial photographs taken September 1947. Field checked 1948
Polyconic projection, 10,000-foot grid ticks based on Colorado coordinate system, south zone, 1000-meter Universal Transverse Mercator grid ticks, zone 12 shown in blue. 1927 North American Datum. To place on the predicted North American Datum 1983 move the projection lines 4 meters north and 58 meters east as shown by dashed corner ticks
Revisions shown in purple and woodland compiled from aerial photographs taken 1979 and other sources. This information not field checked. Map edited 1981



CONTOUR INTERVAL 20 FEET
NATIONAL GEODETIC VERTICAL DATUM OF 1929

THIS MAP COMPLIES WITH NATIONAL MAP ACCURACY STANDARDS
FOR SALE BY U.S. GEOLOGICAL SURVEY, DENVER, COLORADO 80225, OR RESTON, VIRGINIA 22092
A FOLDER DESCRIBING TOPOGRAPHIC MAPS AND SYMBOLS IS AVAILABLE ON REQUEST



ROAD CLASSIFICATION
Primary highway, all weather, hard surface
Secondary highway, all weather, hard surface
Light-duty road, all weather, improved surface
Unimproved road, fair or dry weather
Interstate Route
U. S. Route
State Route

NATURITA NW., COLO.
N3807.5-W10837.5/7.5



1948
PHOTOREVISED 1981
DMA 4260 II NW-SERIES V877

OFFICE COPY

SEP 2 1982
MAP ROOM
ARTHUR LAKES LIBRARY

COLORADO SCHOOL OF MINES
LIBRARY

LIBRARY USE ONLY