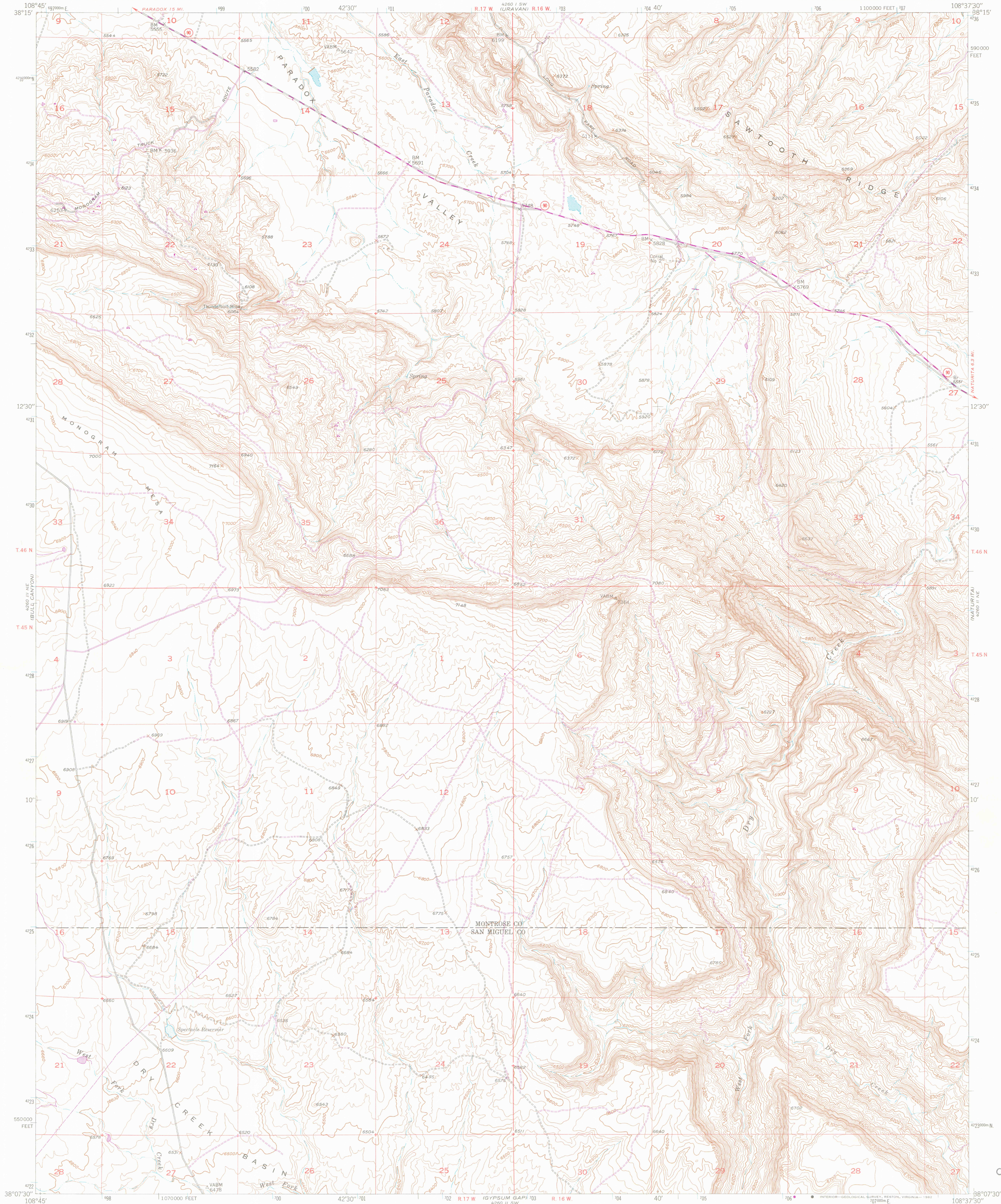


UNITED STATES  
DEPARTMENT OF THE INTERIOR  
GEOLOGICAL SURVEY

NATURITA NW. QUADRANGLE  
COLORADO  
7.5 MINUTE SERIES (TOPOGRAPHIC)



Mapped, edited, and published by the Geological Survey

Control by USGS

Topography by photogrammetric methods from aerial photographs taken September 1947. Field checked 1948

Polyconic projection. 10,000-foot grid ticks based on Colorado coordinate system, south zone. 1000-meter Universal Transverse Mercator grid ticks, zone 12 shown in blue. 1927 North American Datum. To place on the predicted North American Datum 1983 move the projection lines 4 meters north and 58 meters east as shown by dashed corner ticks

Revisions shown in purple and woodland compiled from aerial photographs taken 1979 and other sources. This information not field checked. Map edited 1981



JAN 1995

MAP ROOM  
ARTHUR LAKES LIBRARY  
COLORADO SCHOOL OF MINES

CONTOUR INTERVAL 20 FEET  
NATIONAL GEODETIC VERTICAL DATUM OF 1929

THIS MAP COMPLIES WITH NATIONAL MAP ACCURACY STANDARDS  
FOR SALE BY U. S. GEOLOGICAL SURVEY, DENVER, COLORADO 80225, OR RESTON, VIRGINIA 22092  
A FOLDER DESCRIBING TOPOGRAPHIC MAPS AND SYMBOLS IS AVAILABLE ON REQUEST



ROAD CLASSIFICATION  
Primary highway, all weather, hard surface  
Secondary highway, all weather, hard surface  
Light-duty road, all weather, improved surface  
Unimproved road, fair or dry weather  
Interstate Route  
U. S. Route  
State Route

GEOLOGICAL SURVEY OF WYOMING  
NATURITA NW., COLO.

TOPO CO 24000

1948  
PHOTOREVISED 1981  
DMA 4260 II NW-SERIES V877



OFFICE COPY

LIBRARY USE ONLY

G 3701  
C222  
S24  
U5  
Naturita NW, CO