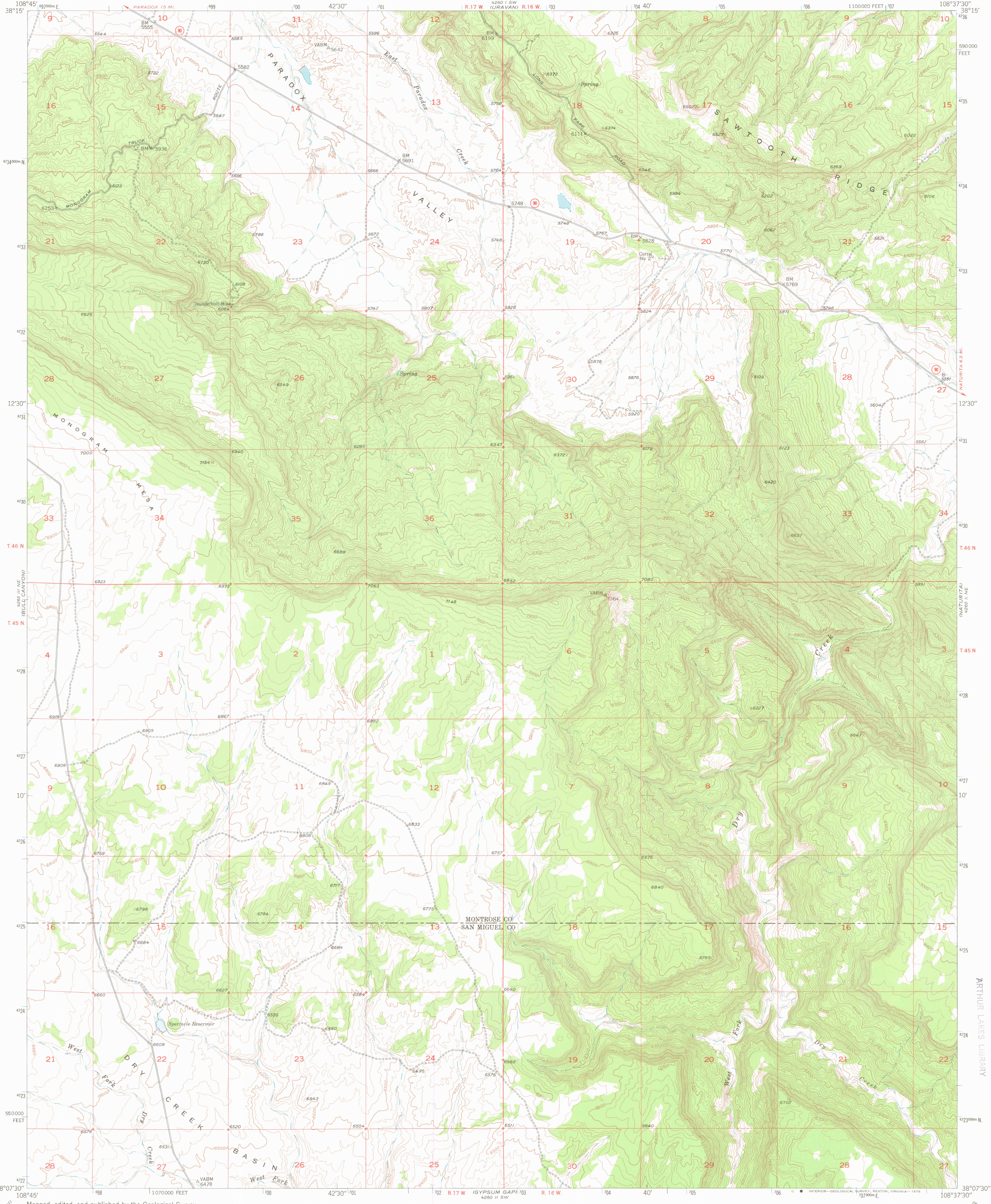
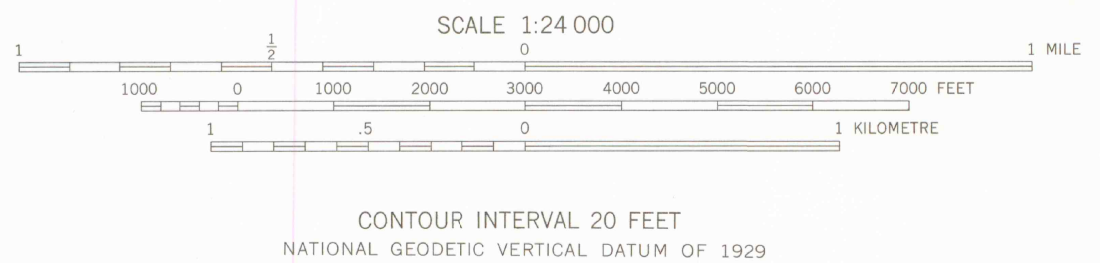
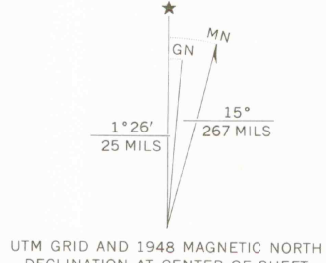


UNITED STATES
DEPARTMENT OF THE INTERIOR
GEOLOGICAL SURVEY

NATURITA NW. QUADRANGLE
COLORADO
7.5 MINUTE SERIES (TOPOGRAPHIC)



Mapped, edited, and published by the Geological Survey
Control by USGS
Topography from aerial photographs by multiplex methods
Aerial photographs taken September 1947. Field check, 1948
Polyconic projection. 1927 North American datum
10,000-foot grid based on Colorado coordinate system,
south zone
1000-metre Universal Transverse Mercator grid ticks,
zone 12, shown in blue



ROAD CLASSIFICATION
Light-duty ——— Unimproved dirt ———
State Route

NATURITA NW., COLO.
N3807.5-W10837.5/7.5

1948
AMS 4260 11 NW—SERIES V877
LIBRARY USE ONLY

MAR 27 1990
MAP ROOM
ARTHUR LAKES LIBRARY
OFFICE COPY