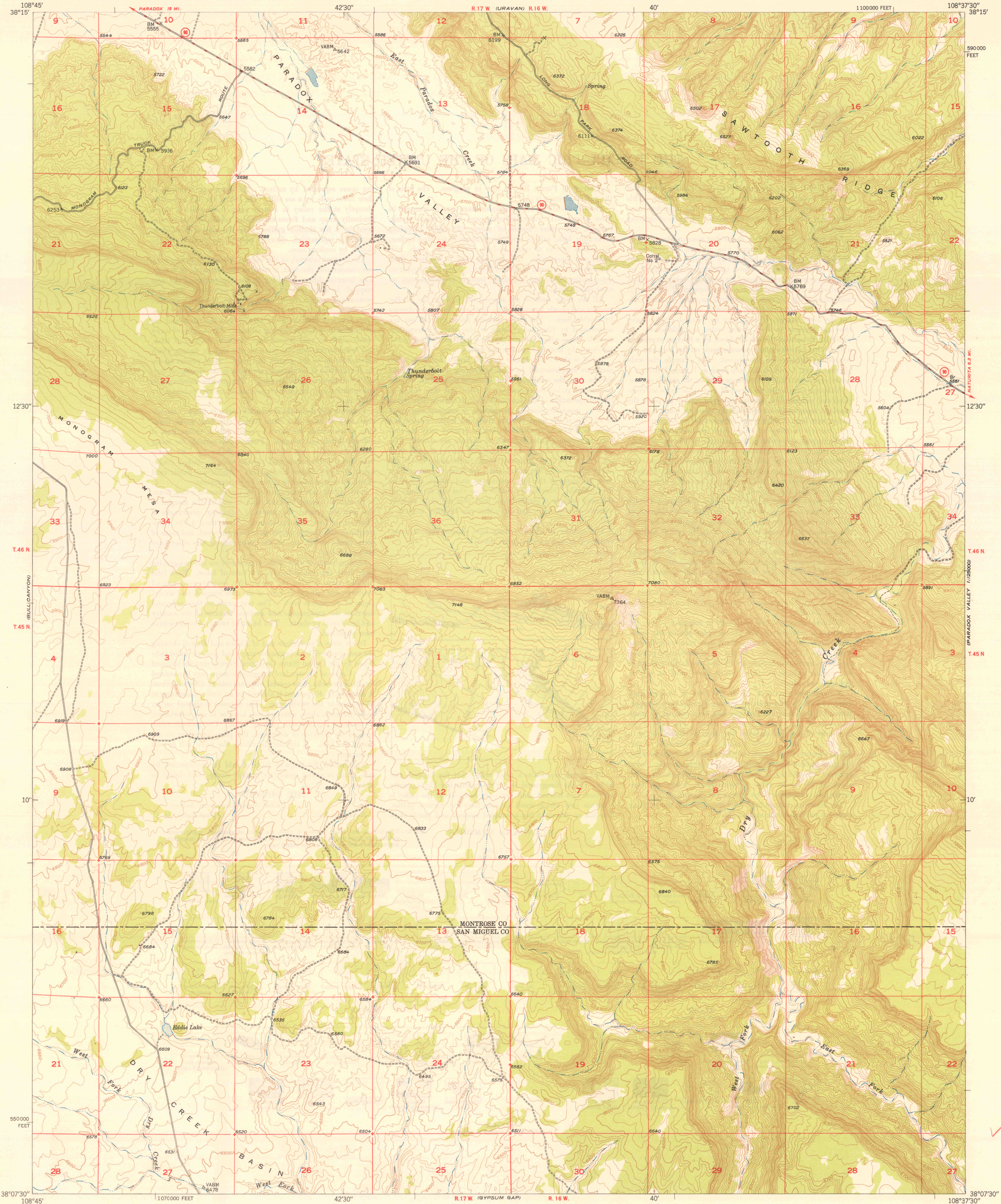
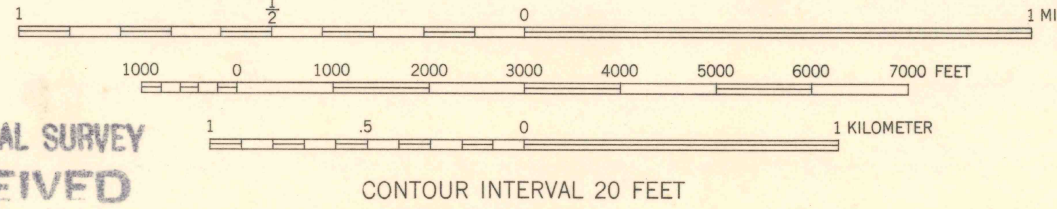


UNITED STATES
DEPARTMENT OF THE INTERIOR
GEOLOGICAL SURVEY

NATURITA NW. QUADRANGLE
COLORADO
7.5 MINUTE SERIES (TOPOGRAPHIC)



Maped, edited, and published by the Geological Survey
Control by USGS
Topography from aerial photographs by multiplex methods
Aerial photographs taken September 1947. Field check 1948
Polyconic projection, 1927 North American datum
10,000-foot grid based on Colorado coordinate system,
south zone



GEOLOGICAL SURVEY
RECEIVED
JUL 2 1 1949
MAP INFORMATION OFFICE

ROAD CLASSIFICATION
HARD-SURFACE ALL WEATHER ROADS DRY WEATHER ROADS
Heavy-duty 1 LANE 1 LANE Improved dirt
Medium-duty 1 LANE 1 LANE Unimproved dirt
Loose-surface, graded, or narrow hard-surface
U. S. Route State Route

NATURITA NW, COLO.
N3807.5-W10837.5/7.5
EDITION OF 1949

THIS MAP COMPLIES WITH NATIONAL MAP ACCURACY STANDARDS
FOR SALE BY U. S. GEOLOGICAL SURVEY, WASHINGTON 25, D. C.