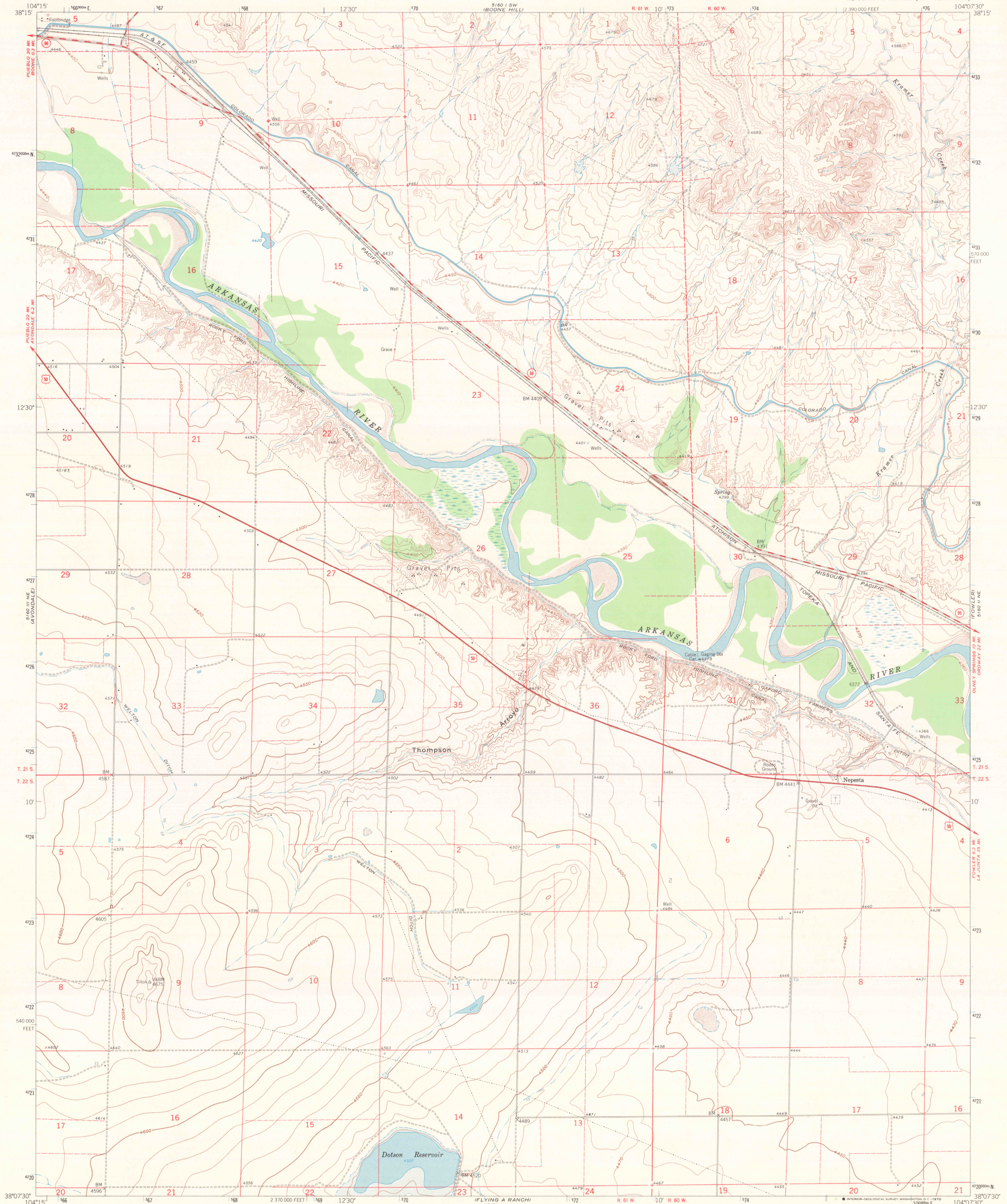
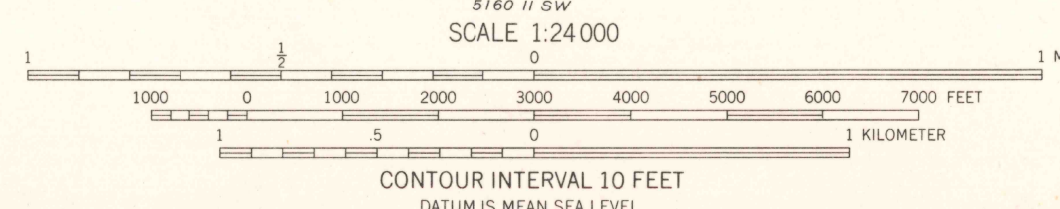
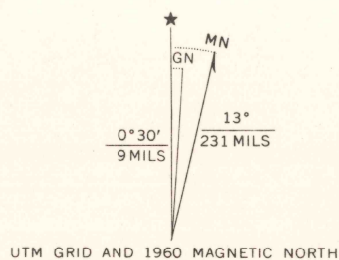


UNITED STATES
DEPARTMENT OF THE INTERIOR
GEOLOGICAL SURVEY

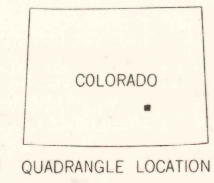
NEPESTA QUADRANGLE
COLORADO-PUEBLO CO.
7.5 MINUTE SERIES (TOPOGRAPHIC)



Mapped, edited, and published by the Geological Survey
Control by USGS and USC&GS
Topography from aerial photographs by photogrammetric methods
Aerial photographs taken 1957. Field check 1960
Polyconic projection. 1927 North American datum
10,000-foot grid based on Colorado coordinate system,
south zone
1000 meter Universal Transverse Mercator grid ticks,
zone 13, shown in blue
Dashed land lines indicate approximate locations
Fine red dashed lines indicate selected fence and field lines
where generally visible on aerial photographs
This information is unchecked



USGS
Historical File
Topographic Division



ROAD CLASSIFICATION
Heavy-duty ——— Light-duty ———
Medium-duty ——— Unimproved dirt ———
U.S. Route ——— State Route ———

U.S.G.S.
FILE COPY
TOPOGRAPHIC DIVISION

NEPESTA, COLO.
N3807.5-W10407.5/7.5

1960

THIS MAP COMPLIES WITH NATIONAL MAP ACCURACY STANDARDS
FOR SALE BY U.S. GEOLOGICAL SURVEY, DENVER, COLORADO 80225, OR WASHINGTON, D.C. 20242
A FOLDER DESCRIBING TOPOGRAPHIC MAPS AND SYMBOLS IS AVAILABLE ON REQUEST

AMS 5160 II NW—SERIES V877

2880
MAR 11 1970