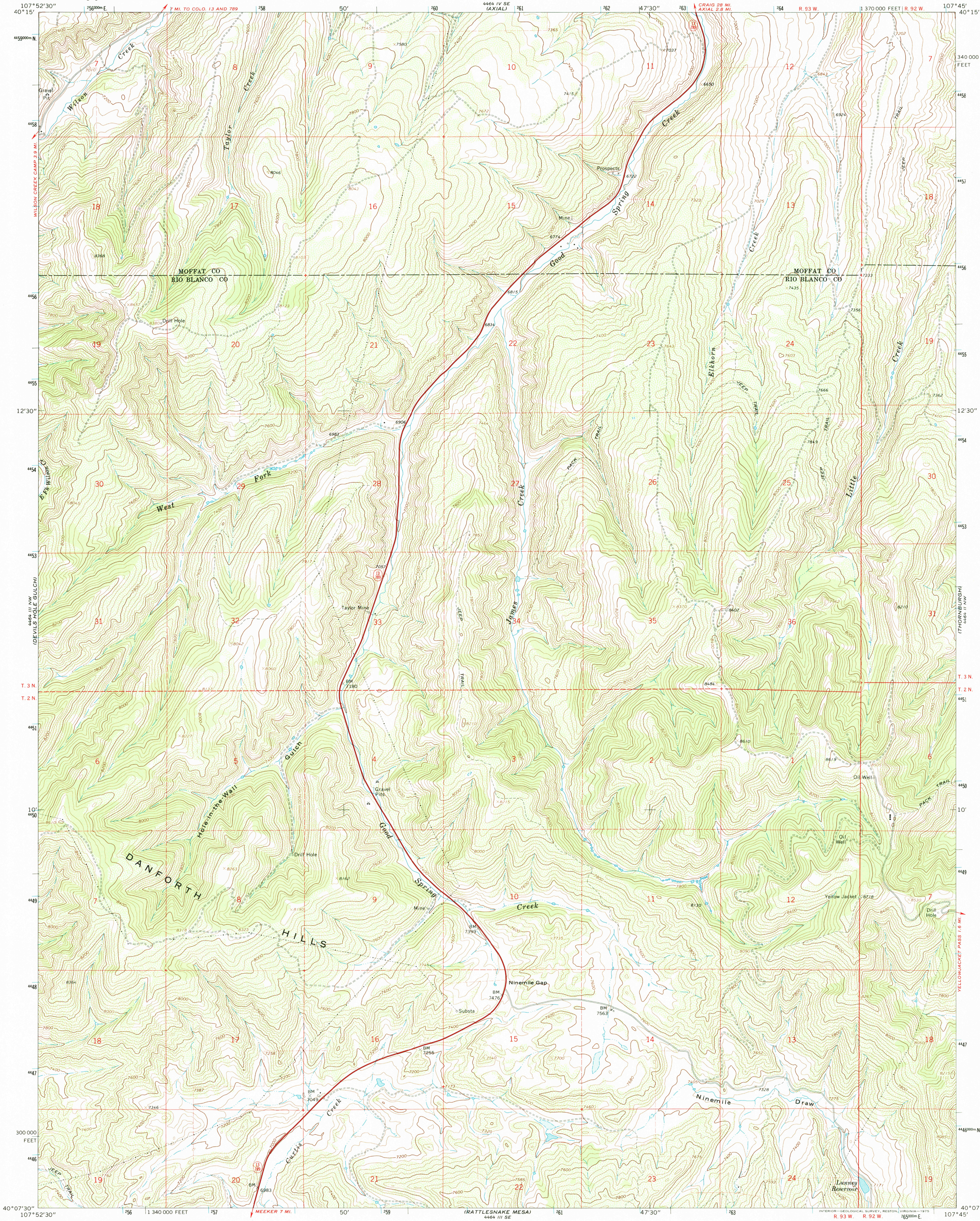




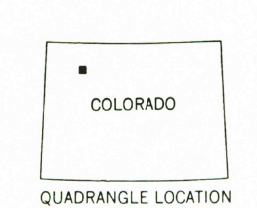
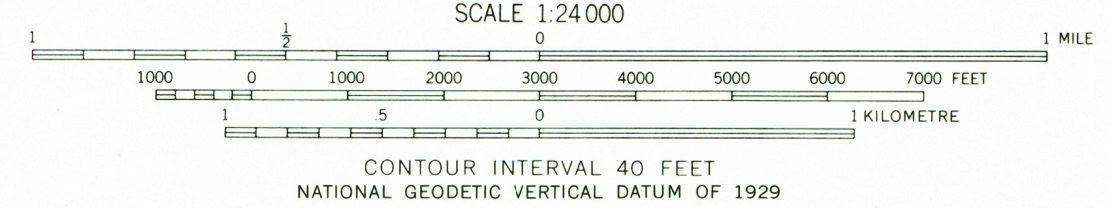
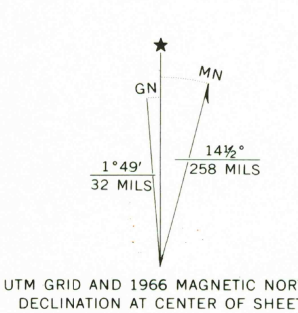
U.S. DEPARTMENT OF THE INTERIOR  
U.S. GEOLOGICAL SURVEY

NINEMILE GAP QUADRANGLE  
COLORADO  
7.5 MINUTE SERIES (TOPOGRAPHIC)  
NE/4 MEKER 15' QUADRANGLE

MONUMENT BUTTE



Mapped, edited, and published by the Geological Survey  
Control by USGS and USC&GS  
Topography by photogrammetric methods from aerial photographs taken 1962. Field checked 1966  
Polyconic projection. 1927 North American datum  
10,000-foot grid based on Colorado coordinate system,  
north zone  
1000-metre Universal Transverse Mercator grid ticks,  
zone 13, shown in blue  
Fine red dashed lines indicate selected fence lines



ROAD CLASSIFICATION  
Heavy-duty ——— Light-duty ———  
Unimproved dirt ———  
State Route ○

NINEMILE GAP, COLO.  
NE/4 MEKER 15' QUADRANGLE  
N4007.5-W10745.7.5

1966

AMS 4464 III NE—SERIES V877

RECEIVED

DEC 31 2001

USGS NWED  
TOPOGRAPHIC MAP ARCHIVES



9 780607 124941