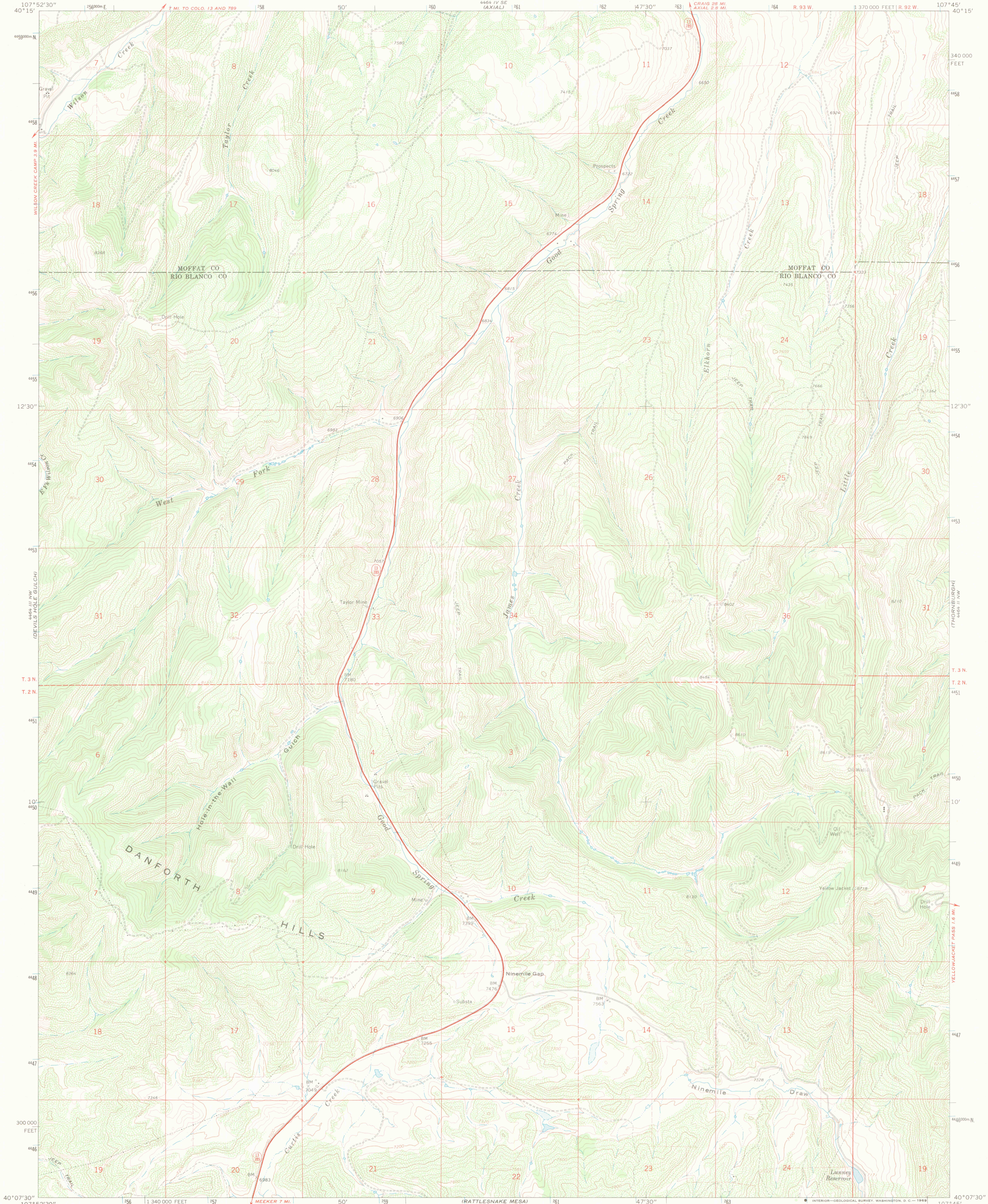
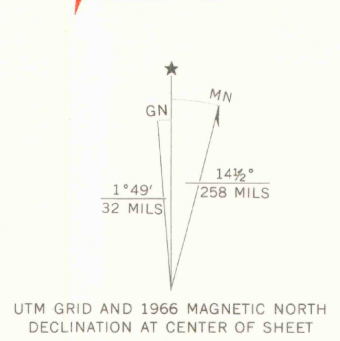


UNITED STATES
DEPARTMENT OF THE INTERIOR
GEOLOGICAL SURVEY

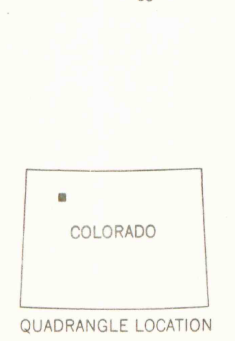
NINEMILE GAP QUADRANGLE
COLORADO
7.5 MINUTE SERIES (TOPOGRAPHIC)
NE/4 MEERER 15' QUADRANGLE



Mapped, edited, and published by the Geological Survey
Control by USGS and USC&GS
Topography by photogrammetric methods from aerial
photographs taken 1962. Field checked 1966
Polyconic projection. 1927 North American datum
10,000-foot grid based on Colorado coordinate system,
north zone
1000-meter Universal Transverse Mercator grid ticks,
zone 13, shown in blue
Fine red dashed lines indicate selected fence lines



SCALE 1:24,000
CONTOUR INTERVAL 40 FEET
DATUM IS MEAN SEA LEVEL
THIS MAP COMPLIES WITH NATIONAL MAP ACCURACY STANDARDS
FOR SALE BY U. S. GEOLOGICAL SURVEY, DENVER, COLORADO 80225, OR WASHINGTON, D. C. 20242
A FOLDER DESCRIBING TOPOGRAPHIC MAPS AND SYMBOLS IS AVAILABLE ON REQUEST



ROAD CLASSIFICATION
Heavy-duty ——— Light-duty ———
Unimproved dirt = = = = =
State Route ○

NINEMILE GAP, COLO.
NE/4 MEERER 15' QUADRANGLE
N4007.5—W10745/7.5

1966
AMS 4464 III NE—SERIES V877

LIBRARY USE ONLY