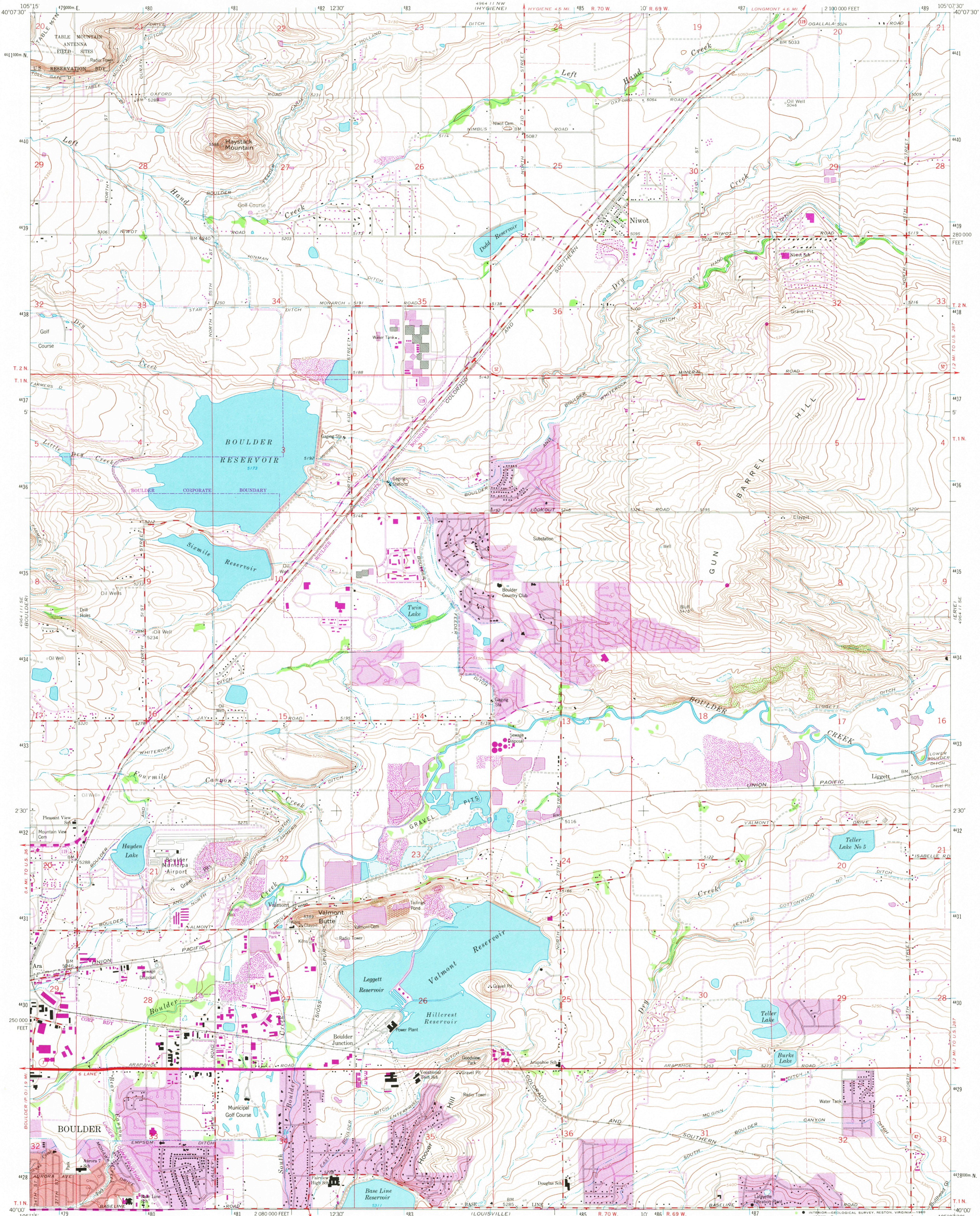


UNITED STATES
DEPARTMENT OF THE INTERIOR
GEOLOGICAL SURVEY

NIWOT QUADRANGLE
COLORADO-Boulder CO.
7.5 MINUTE SERIES (TOPOGRAPHIC)



Maped, edited, and published by the Geological Survey
Revised in cooperation with the Inter-County
Regional Planning Commission

Control by USGS and NOS/NOAA

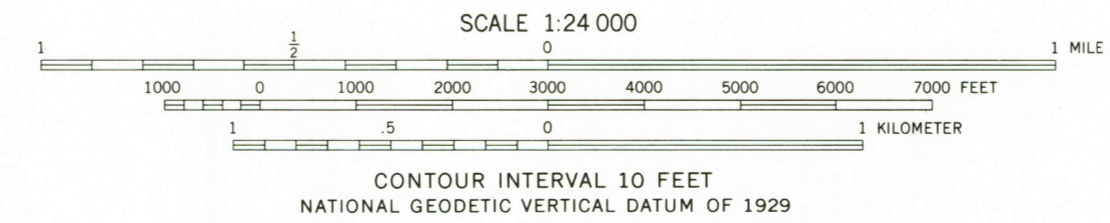
Topography by photogrammetric methods from aerial photographs
taken 1948 and planetable surveys 1949-1950. Revised from aerial
photographs taken 1966. Field checked 1967

Polyconic projection. 1927 North American datum
10,000-foot grid based on Colorado coordinate system,
north zone.

1000-meter Universal Transverse Mercator grid ticks,
zone 13, shown in blue

Red tint indicates areas in which only landmark buildings are shown
Fine red dashed lines indicate selected fence lines

UTM GRID and 1979 MAGNETIC NORTH
DECLINATION AT CENTER OF SHEET
To place on the predicted North American
Datum 1983 move the projection lines
5 meters north and 48 meters east as shown
by dashed corner ticks

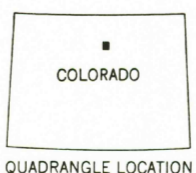


THIS MAP COMPLIES WITH NATIONAL MAP ACCURACY STANDARDS
FOR SALE BY U.S. GEOLOGICAL SURVEY, DENVER, COLORADO 80225, OR RESTON, VIRGINIA 22092
A FOLDER DESCRIBING TOPOGRAPHIC MAPS AND SYMBOLS IS AVAILABLE ON REQUEST

Revisions shown in purple compiled from aerial photographs
taken 1978 and other source data. This information not
field checked. Map edited 1979

Purple tint indicates extension of urban areas

ROAD CLASSIFICATION
Heavy-duty ——— Light-duty ———
Medium-duty ——— Unimproved dirt ———
○ State Route



USGS
Historical File
Topographic Division

NIWOT, COLO.
N4000-W10507.5/7.5

1967
PHOTOREVISED 1979
DMA 4964 11 SW - SERIES V877

OCT 29 1980

3600