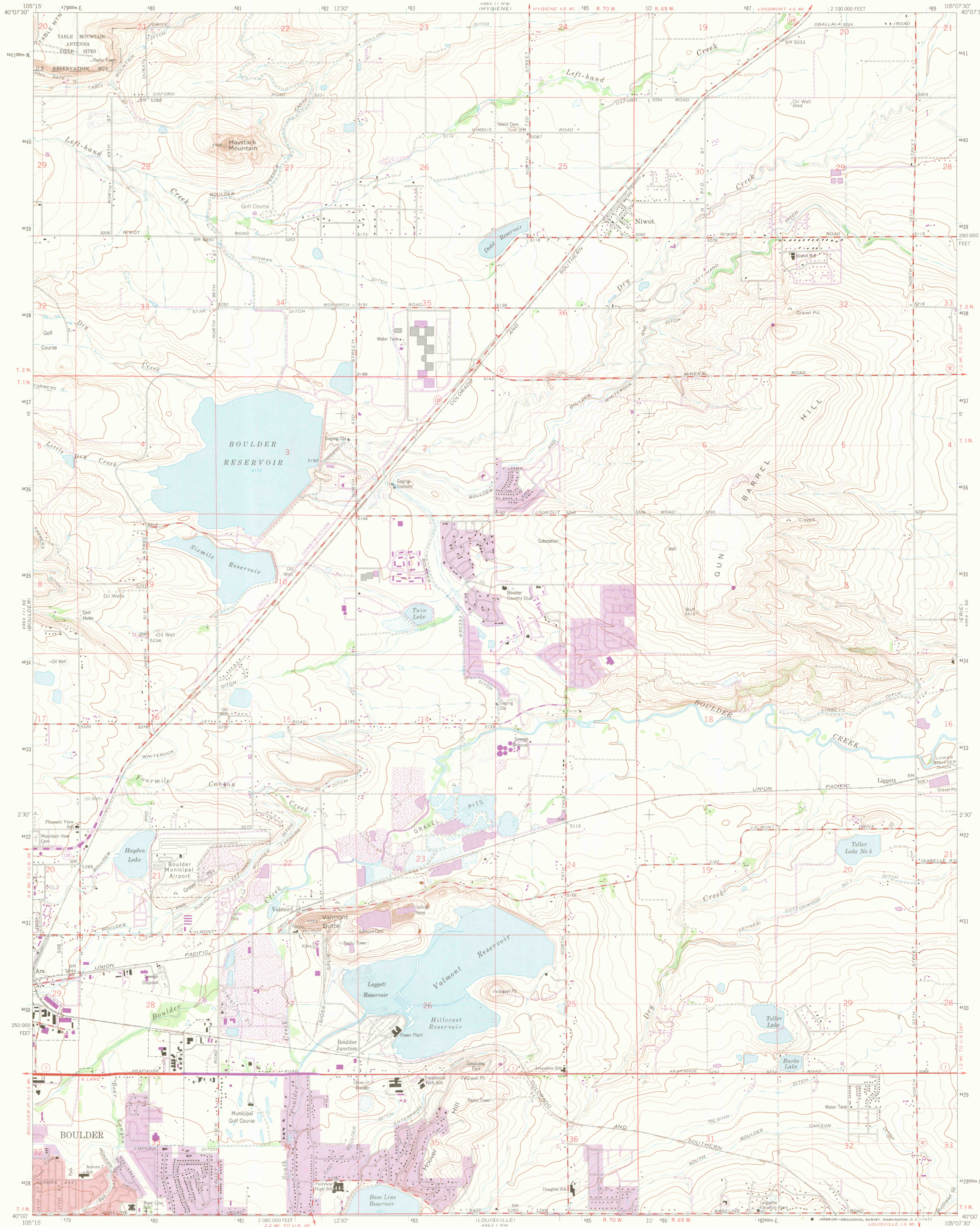
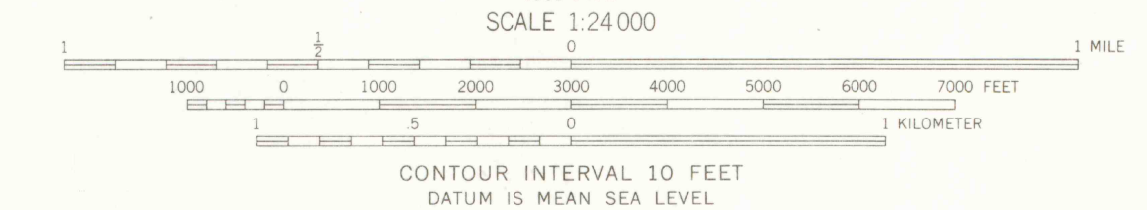


UNITED STATES
DEPARTMENT OF THE INTERIOR
GEOLOGICAL SURVEY

NIWOT QUADRANGLE
COLORADO-Boulder CO.
7.5 MINUTE SERIES (TOPOGRAPHIC)



Maped, edited, and published by the Geological Survey
Revised in cooperation with the Inter-County
Regional Planning Commission
Control by USGS and USC&GS
Topography by photogrammetric methods from aerial photographs
taken 1948 and planetable surveys 1949-1950. Revised from aerial
photographs taken 1966. Field checked 1967
Polyconic projection. 1927 North American datum
10,000-foot grid based on Colorado coordinate system,
north zone
1000-meter Universal Transverse Mercator grid ticks,
zone 13, shown in blue
Red tint indicates areas in which only landmark buildings are shown
Fine red dashed lines indicate selected fence lines



ROAD CLASSIFICATION
Heavy-duty ——— Light-duty ———
Medium-duty ——— Unimproved dirt ———
State Route ———



THIS MAP COMPLIES WITH NATIONAL MAP ACCURACY STANDARDS
FOR SALE BY U.S. GEOLOGICAL SURVEY, DENVER, COLORADO 80225, OR WASHINGTON, D. C. 20242
A FOLDER DESCRIBING TOPOGRAPHIC MAPS AND SYMBOLS IS AVAILABLE ON REQUEST

Revisions shown in purple compiled from aerial photographs
taken 1971. This information not field checked
Purple tint indicates extension of urban areas

NIWOT, COLO.
N4000-W10507.5/7.5
1967
PHOTOREVISED 1971
AMS 4964 11 SW - SERIES V877

LIBRARY USE ONLY