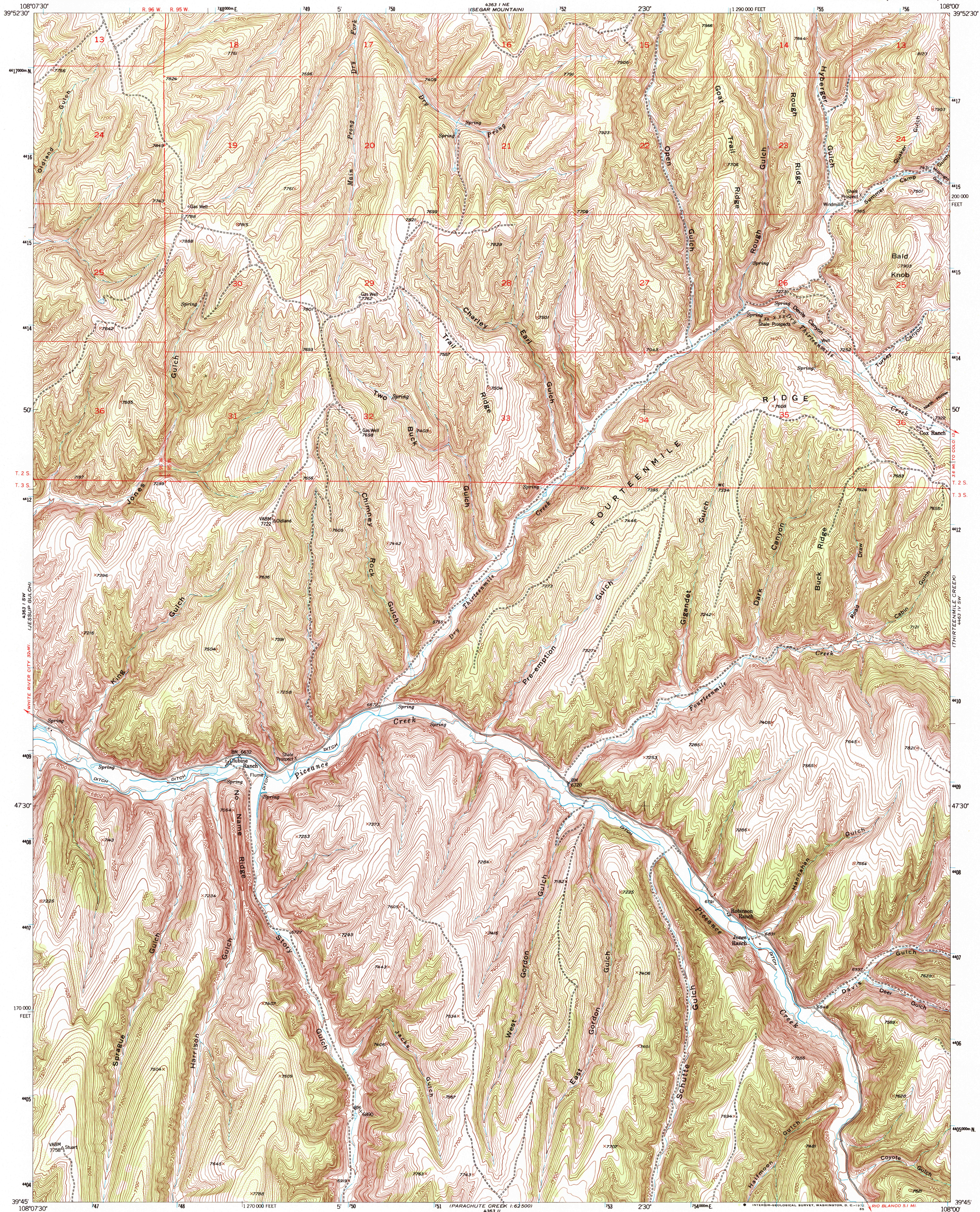
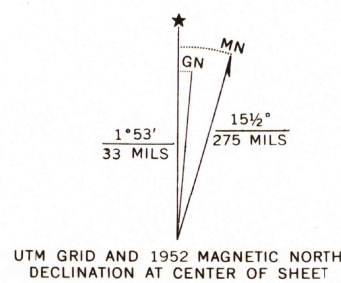


UNITED STATES  
DEPARTMENT OF THE INTERIOR  
GEOLOGICAL SURVEY

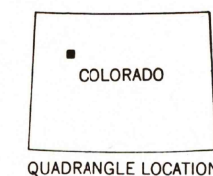
NO NAME RIDGE QUADRANGLE  
COLORADO—RIO BLANCO CO.  
7.5 MINUTE SERIES (TOPOGRAPHIC)



Mapped, edited, and published by the Geological Survey  
Control by USGS and USC&GS  
Topography from aerial photographs by multiplex methods  
Aerial photographs taken 1948. Field check 1952  
Polyconic projection, 1927 North American datum  
10,000-foot grid based on Colorado coordinate system,  
north zone  
Land lines are omitted in T. 3 S., R. 95 W. and T. 3 S., R. 96 W.  
because of insufficient data. All recovered corners are shown  
1000-meter Universal Transverse Mercator grid ticks,  
zone 12, shown in blue



FOR SALE BY U. S. GEOLOGICAL SURVEY, DENVER, COLORADO 80225, OR WASHINGTON, D. C. 20242  
A FOLDER DESCRIBING TOPOGRAPHIC MAPS AND SYMBOLS IS AVAILABLE ON REQUEST



ROAD CLASSIFICATION  
Light-duty ..... Unimproved dirt .....

NO NAME RIDGE, COLO.  
N3945—W10800/7.5

1952

AMS 4363 1 SE—SERIES V877

