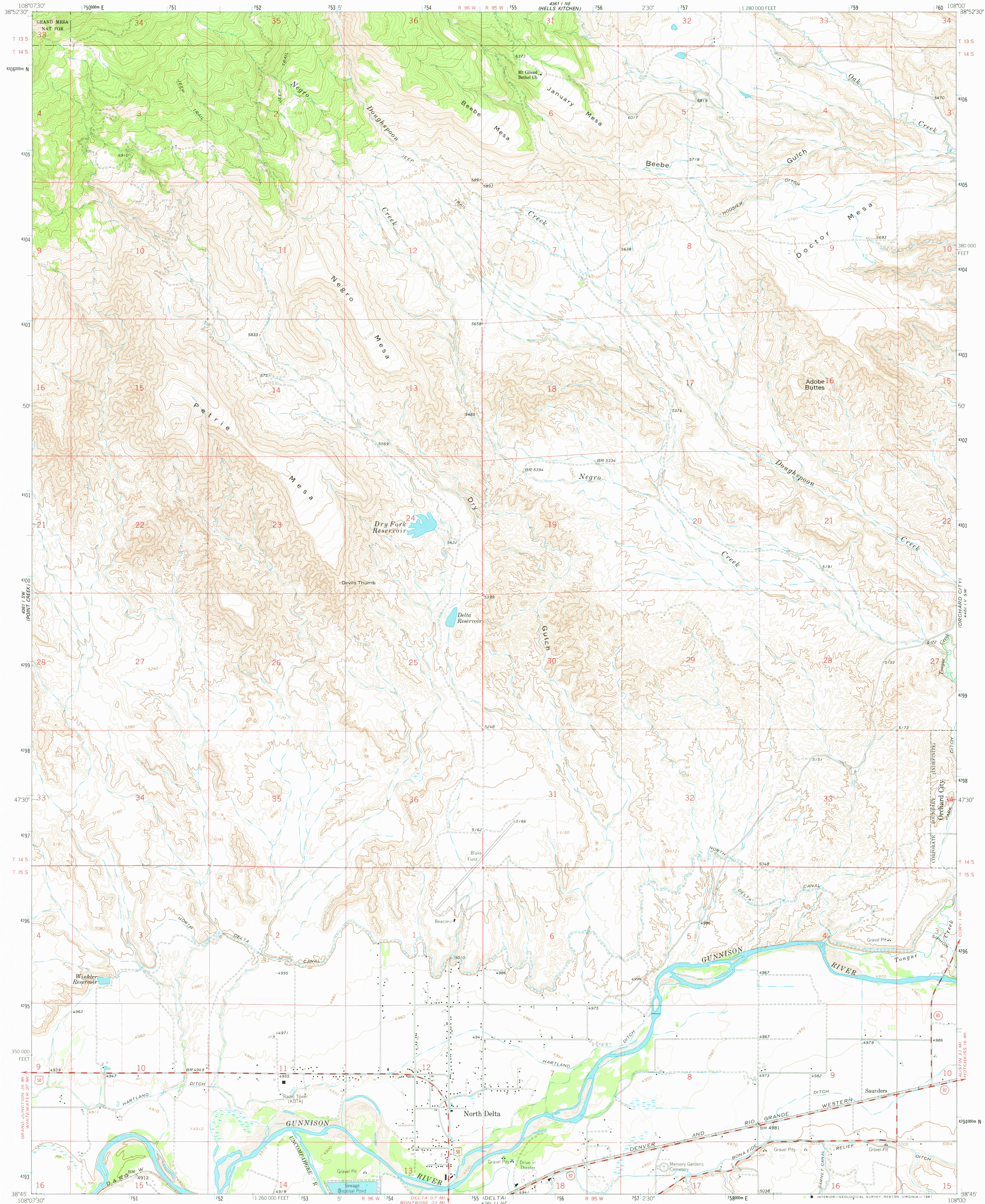


UNITED STATES
DEPARTMENT OF THE INTERIOR
GEOLOGICAL SURVEY

NORTH DELTA QUADRANGLE
COLORADO-DELTA CO.
7.5 MINUTE SERIES (TOPOGRAPHIC)



Mapped, edited, and published by the Geological Survey

Control by USGS and USC&GS

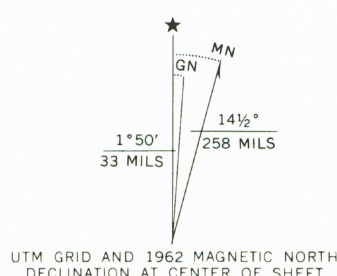
Topography by photogrammetric methods from aerial
photographs taken 1960 Field checked 1962

Polycyclic projection, 1927 North American datum
10 000 foot grid based on Colorado coordinate system, central zone
1000-meter Universal Transverse Mercator grid ticks,
zone 12, shown in blue

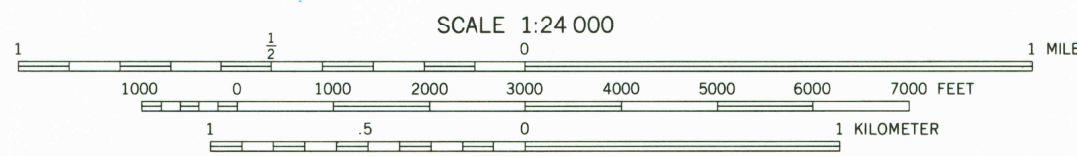
Fine red dashed lines indicate selected fence lines

To place on the predicted North American Datum 1983
move the projection lines 5 meters north and
56 meters east as shown by dashed corner ticks

There may be private inholdings within the boundaries
of the National or State reservations shown on this map

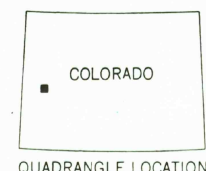


UTM GRID AND 1962 MAGNETIC NORTH
DECLINATION AT CENTER OF SHEET



CONTOUR INTERVAL 20 FEET
DOTTED LINES REPRESENT 10-FOOT CONTOURS
NATIONAL GEODETIC VERTICAL DATUM OF 1929

THIS MAP COMPLIES WITH NATIONAL MAP ACCURACY STANDARDS
FOR SALE BY U. S. GEOLOGICAL SURVEY, DENVER, COLORADO 80225, OR RESTON, VIRGINIA 22092
A FOLDER DESCRIBING TOPOGRAPHIC MAPS AND SYMBOLS IS AVAILABLE ON REQUEST



QUADRANGLE LOCATION

ROAD CLASSIFICATION
Medium-duty ——— Light-duty ———
Unimproved dirt ———
U.S. Route ——— State Route ———

USGS
HISTORICAL FILE
NATIONAL MAPPING DIVISION

NORTH DELTA, COLO.
N3845-W10800/7.5
1962

DMA 4361 1 SE-SERIES V877

1800
JUN 3 1981