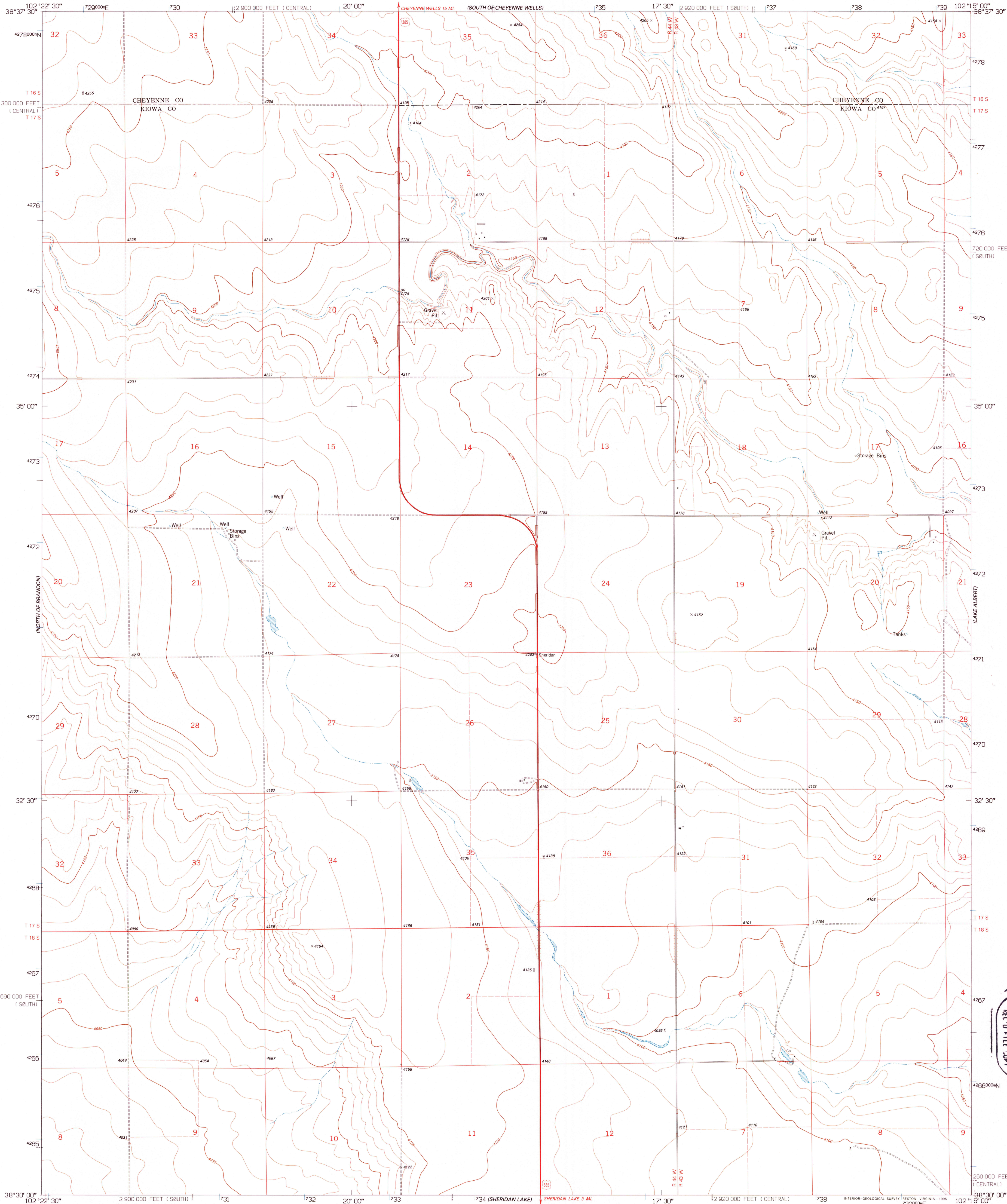
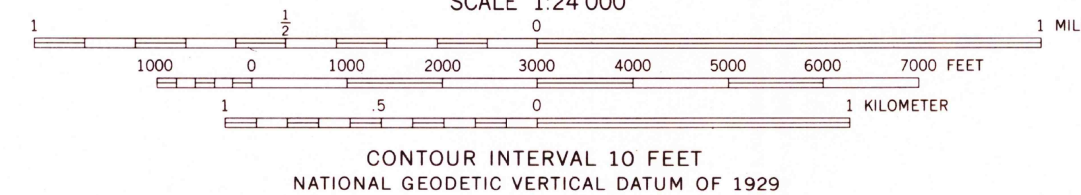
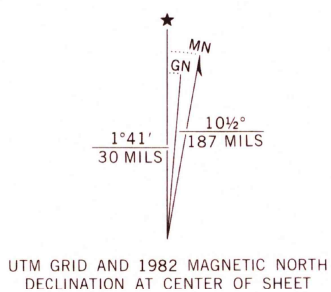


UNITED STATES
DEPARTMENT OF THE INTERIOR
GEOLOGICAL SURVEY

NORTH OF SHERIDAN LAKE QUADRANGLE
COLORADO
7.5 MINUTE SERIES (TOPOGRAPHIC)
(FORMERLY CHEYENNE WELLS 3 SE)



Produced by the United States Geological Survey
Control by USGS and NOS/NOAA
Compiled from aerial photographs taken 1975. Field checked 1976
Map edited 1982
North American Datum of 1927 (NAD 27). Projection:
Colorado Coordinate System, south zone (Lambert Conformal Conic)
10 000-foot ticks: Colorado Coordinate System south and central zones
Blue 1000-meter Universal Transverse Mercator ticks, zone 13
North American Datum of 1983 (NAD 83) is shown by dashed
corner ticks. The values of the shift between NAD 27 and NAD 83
for 7.5-minute intersections are obtainable from National Geodetic
Survey NADCON software
Fine red dashed lines indicate selected fence lines



ROAD CLASSIFICATION
Primary highway, hard surface ———— Light-duty road, hard or improved surface ————
Secondary highway, hard surface ———— Unimproved road ————
○ Interstate Route ○ U. S. Route ○ State Route

NORTH OF SHERIDAN LAKE, CO
(FORMERLY CHEYENNE WELLS 3 SE)
38102-E3-TF-024
1982
DMA 5561 III SE-SERIES V877

