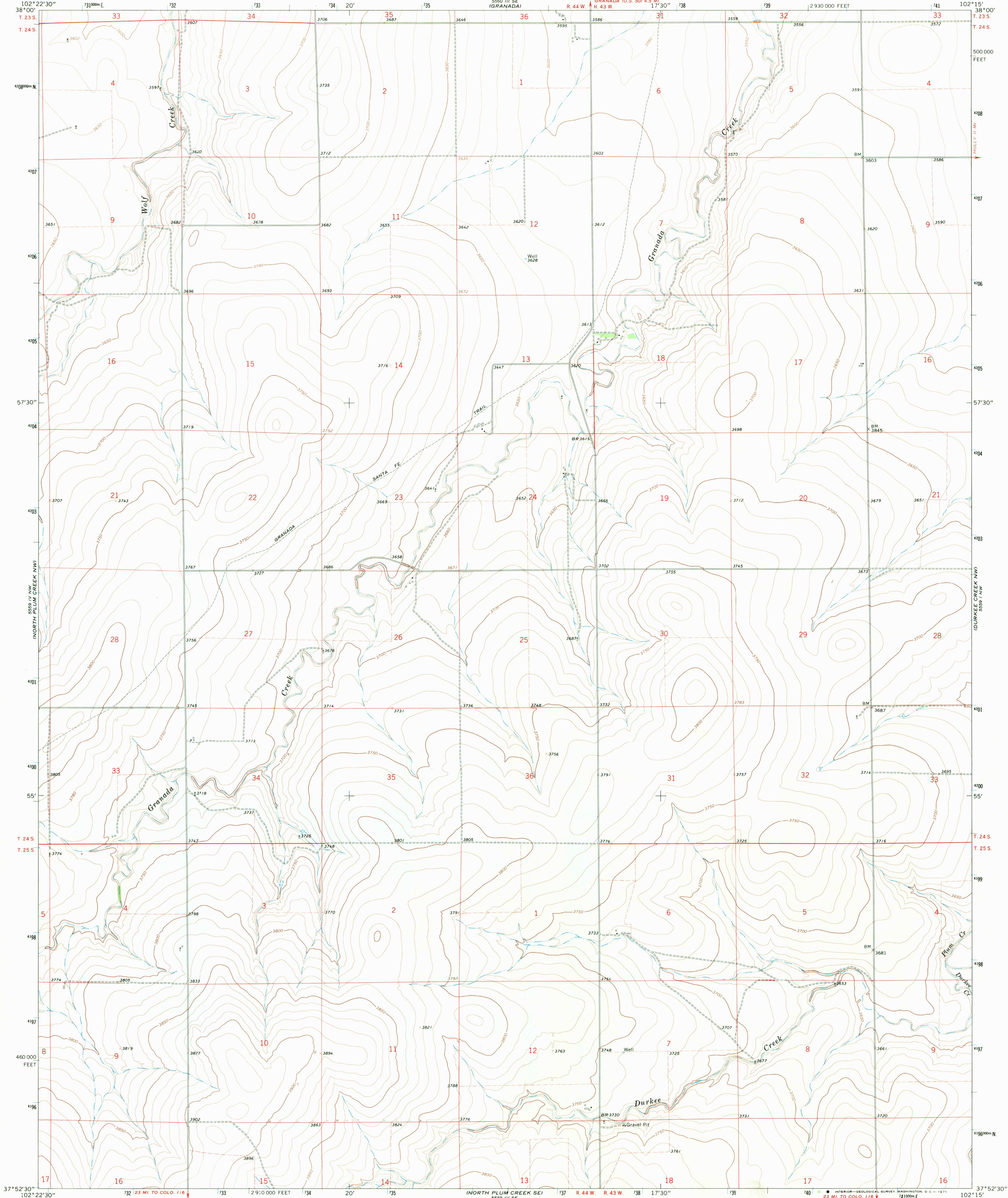
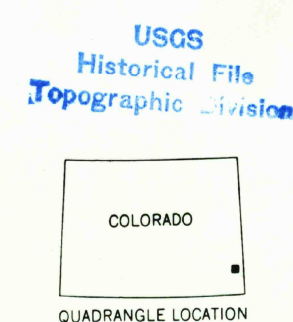
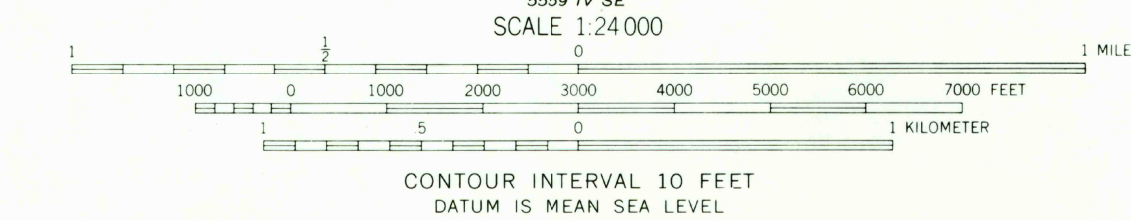
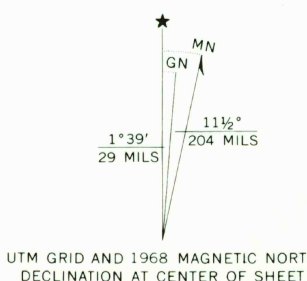


UNITED STATES
DEPARTMENT OF THE INTERIOR
GEOLOGICAL SURVEY

NORTH PLUM CREEK NE QUADRANGLE
COLORADO—PROWERS CO.
7.5 MINUTE SERIES (TOPOGRAPHIC)



Mapped, edited, and published by the Geological Survey
Control by USGS and USC&GS
Topography by photogrammetric methods from aerial
photographs taken 1967. Field checked 1968
Polyconic projection. 1927 North American datum
10,000-foot grid based on Colorado coordinate system,
south zone
1000-meter Universal Transverse Mercator grid ticks,
zone 13, shown in blue
Fine red dashed lines indicate selected fence lines



ROAD CLASSIFICATION
Light-duty road, all weather, Unimproved road, fair or dry weather
improved surface

U.S.G.S.
FILE COPY
TOPOGRAPHIC DIVISION

NORTH PLUM CREEK NE, COLO.
N3752.5-W10215/7.5

1968
APR 27 1971

AMS 5559 IV NE—SERIES B877