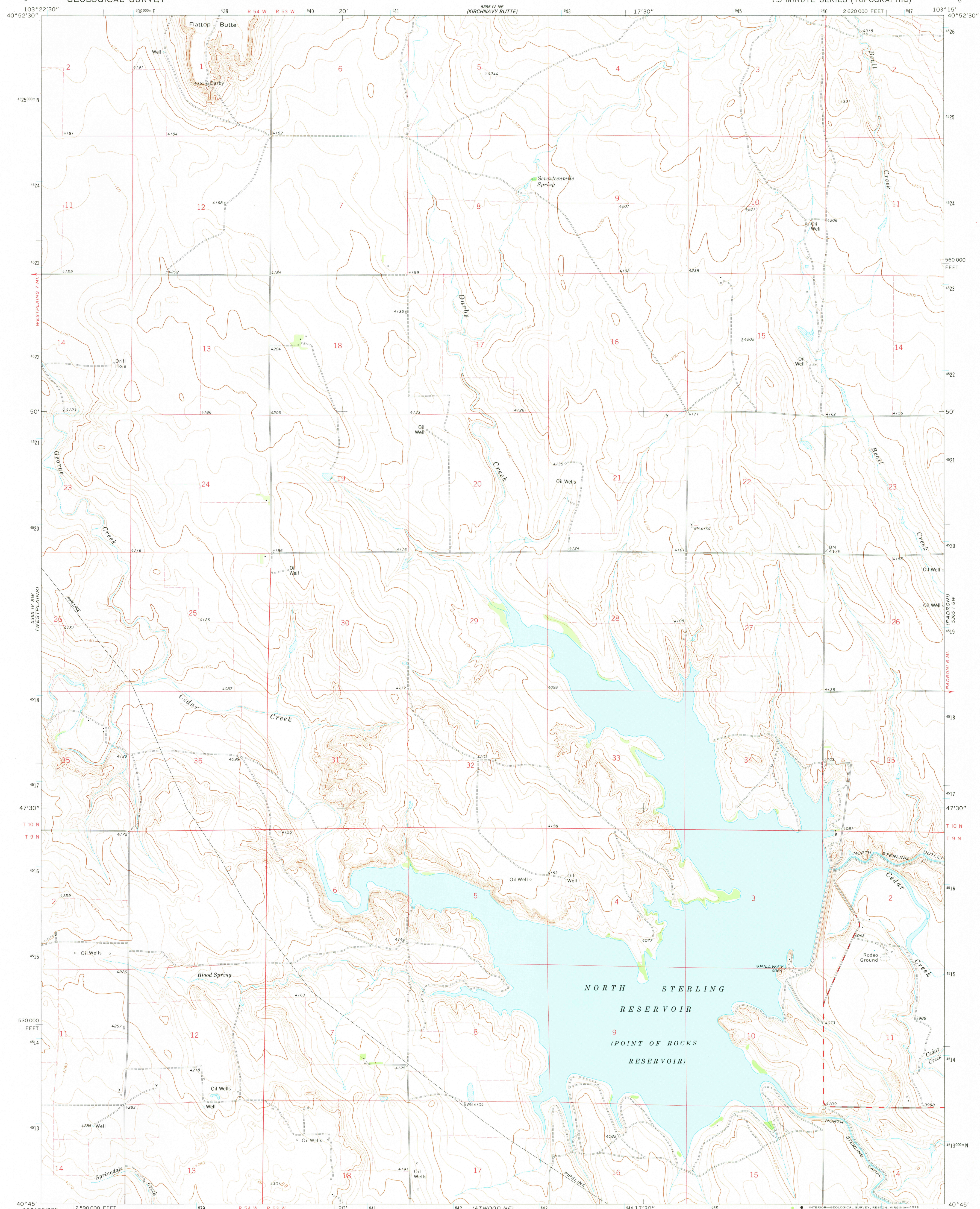


CHIMNEY CANYONS
5365 IV SW
5365 III NW

UNITED STATES
DEPARTMENT OF THE INTERIOR
GEOLOGICAL SURVEY

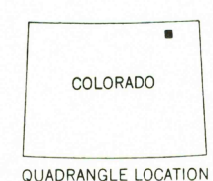
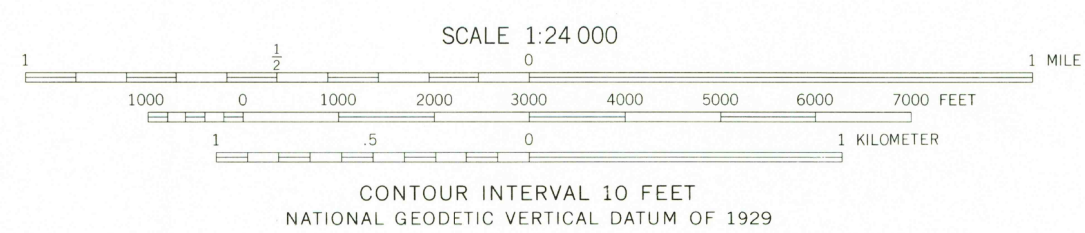
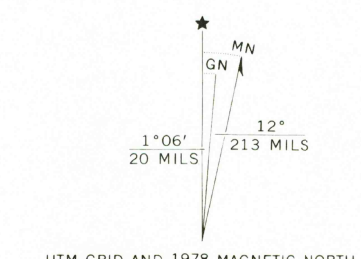
NORTH STERLING RESERVOIR QUADRANGLE
COLORADO—LOGAN CO.
7.5 MINUTE SERIES (TOPOGRAPHIC)

5365 IV NW
(PADRON NW)



WILD HORSE LAKE
5365 III NW

Mapped, edited, and published by the Geological Survey
Control by USGS and NOS/NOAA
Topography by photogrammetric methods from aerial photographs
taken 1973. Field checked 1974. Map edited 1978
Projection and 10,000-foot grid ticks: Colorado
coordinate system, north zone (Lambert conformal conic)
1000-meter Universal Transverse Mercator grid ticks,
zone 13, shown in blue. 1927 North American datum
Fine red dashed lines indicate selected fence lines



ROAD CLASSIFICATION

| | |
|------------------------------------|--|
| Primary highway, hard surface | Light-duty road, hard or improved surface |
| Secondary highway, hard surface | Unimproved road |
| Interstate Route | U. S. Route |
| | State Route |

AUG 15 1978

THIS MAP COMPLIES WITH NATIONAL MAP ACCURACY STANDARDS
FOR SALE BY U. S. GEOLOGICAL SURVEY, DENVER, COLORADO 80225, OR RESTON, VIRGINIA 22092
A FOLDER DESCRIBING TOPOGRAPHIC MAPS AND SYMBOLS IS AVAILABLE ON REQUEST

NORTH STERLING RESERVOIR, COLO.
USGS
Historical File
Topographic Division
N4045—W10315/7.5
1978
AMS 5365 IV SE—SERIES V877

STERLING NORTH
5365 III NW