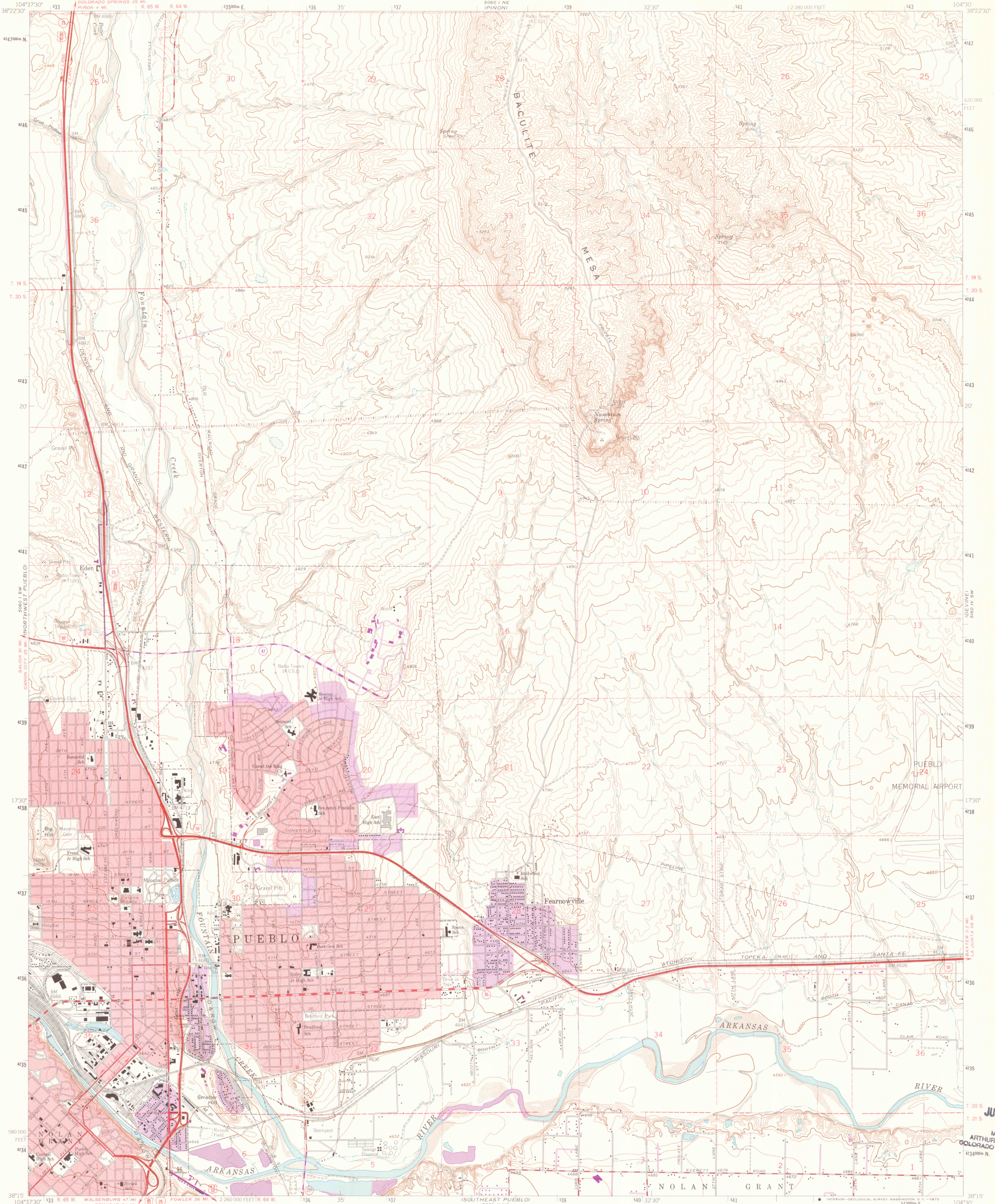


UNITED STATES
DEPARTMENT OF THE INTERIOR
GEOLOGICAL SURVEY

NORTHEAST PUEBLO QUADRANGLE
COLORADO-PUEBLO CO.
7.5 MINUTE SERIES (TOPOGRAPHIC)



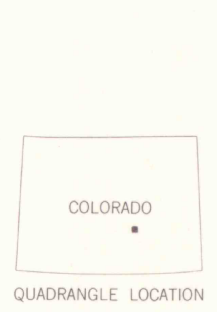
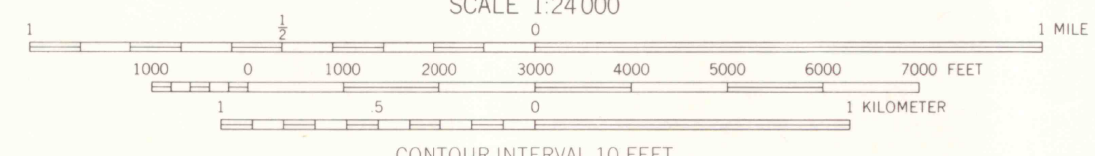
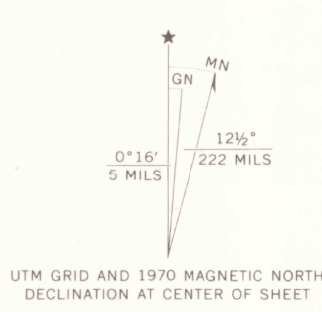
Maped, edited, and published by the Geological Survey
Control by USGS and USC&GS

Topography by photogrammetric methods from aerial
photographs taken 1954 and 1957. Field checked 1961

Polyconic projection. 1927 North American datum
10,000-foot grid based on Colorado coordinate system, south zone
1000 meter Universal Transverse Mercator grid ticks,
zone 13, shown in blue

Red tint indicates areas in which only landmark buildings are shown
Fine red dashed lines indicate selected fence and field lines where
generally visible on aerial photographs. This information is unchecked

Revisions shown in purple compiled from aerial photographs
taken 1970. This information not field checked
Purple tint indicates extension of urban areas



ROAD CLASSIFICATION	
Heavy-duty	Light duty
Medium-duty	Unimproved dirt
Interstate Route	U.S. Route
	State Route

THIS MAP COMPLIES WITH NATIONAL MAP ACCURACY STANDARDS
FOR SALE BY U.S. GEOLOGICAL SURVEY, DENVER, COLORADO 80225, OR WASHINGTON, D.C. 20242
A FOLDER DESCRIBING TOPOGRAPHIC MAPS AND SYMBOLS IS AVAILABLE ON REQUEST

NORTHEAST PUEBLO, COLO.
N3815 - W10430/7.5

1961
PHOTOREVISED 1970
AMS 5060 1 SE-SERIES V877

JUL 30 1998
MAP ROOM
ARTHUR LAKES LIBRARY
COLORADO SCHOOL OF MINES
43° 40' 00\"/>

OFFICE COPY

3701
C222
624
5