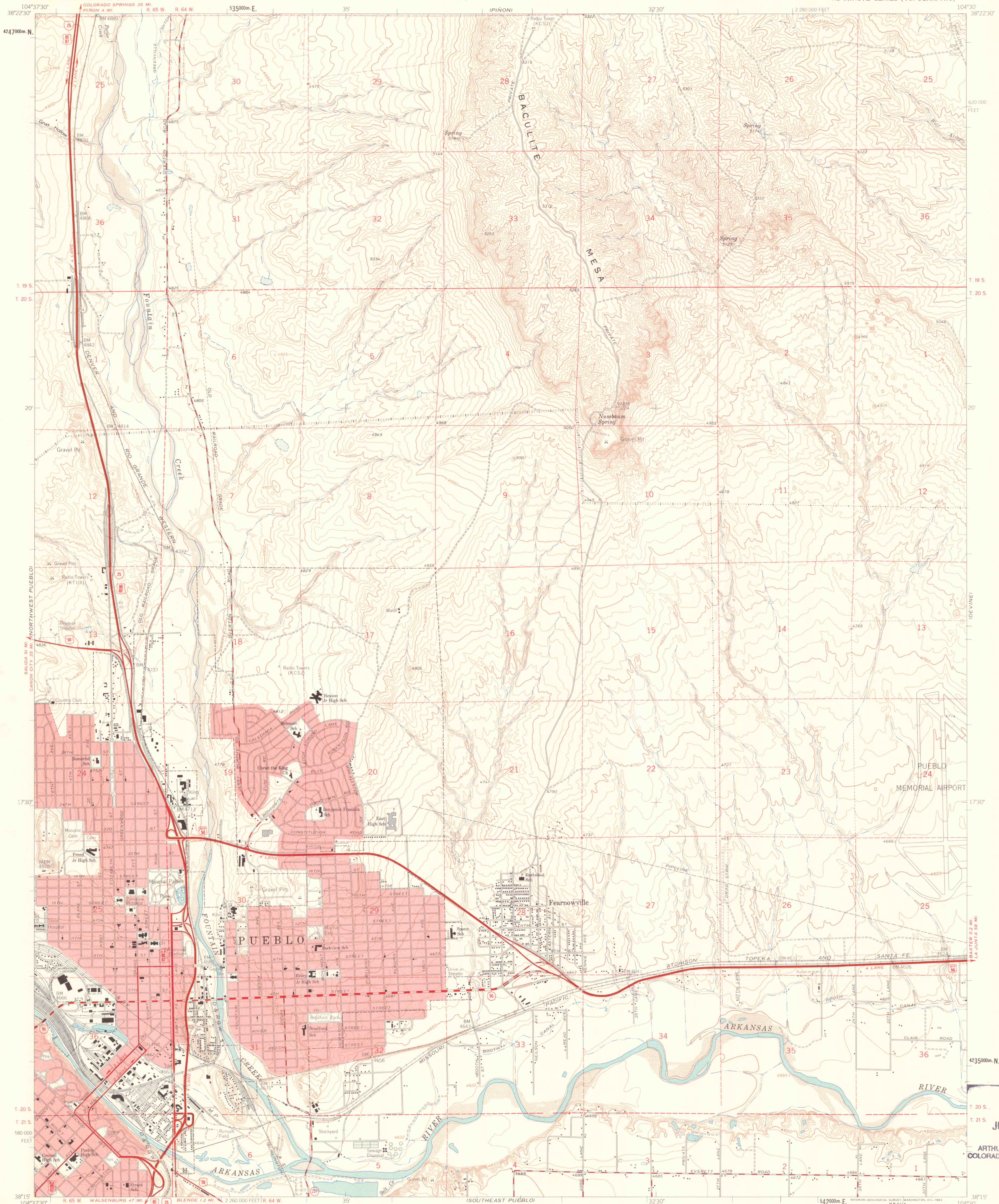


UNITED STATES
DEPARTMENT OF THE INTERIOR
GEOLOGICAL SURVEY

NORTHEAST PUEBLO QUADRANGLE
COLORADO—PUEBLO CO.
7.5 MINUTE SERIES (TOPOGRAPHIC)



Mapped, edited, and published by the Geological Survey

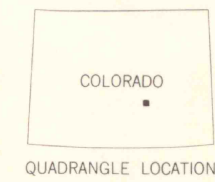
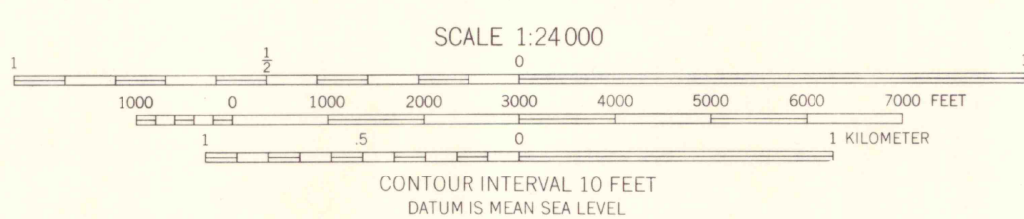
Control by USGS and USC&GS

Topography by photogrammetric methods from aerial
photographs taken 1954 and 1957. Field checked 1961

Polynomial projection. 1927 North American datum
10,000 foot grid based on Colorado coordinate system, south zone
1000-meter Universal Transverse Mercator grid ticks,
zone 13, shown in blue

Red tint indicates areas in which only landmark buildings are shown
Fine red dashed lines indicate selected fence and field lines where
generally visible on aerial photographs. This information is unchecked

APPROXIMATE MEAN
DECLINATION, 1961



ROAD CLASSIFICATION
Heavy-duty ——— Light-duty ———
Medium-duty ——— Unimproved dirt ———
Interstate Route — U.S. Route — State Route

NORTHEAST PUEBLO, COLO.
N3815—W10430/7.5

1961

OFFICE COPY
LIBRARY USE ONLY

JUN 1995
MAP ROOM
ARTHUR LAKES LIBRARY
COLORADO SCHOOL OF MINES

G
3701
C222
S24
US

