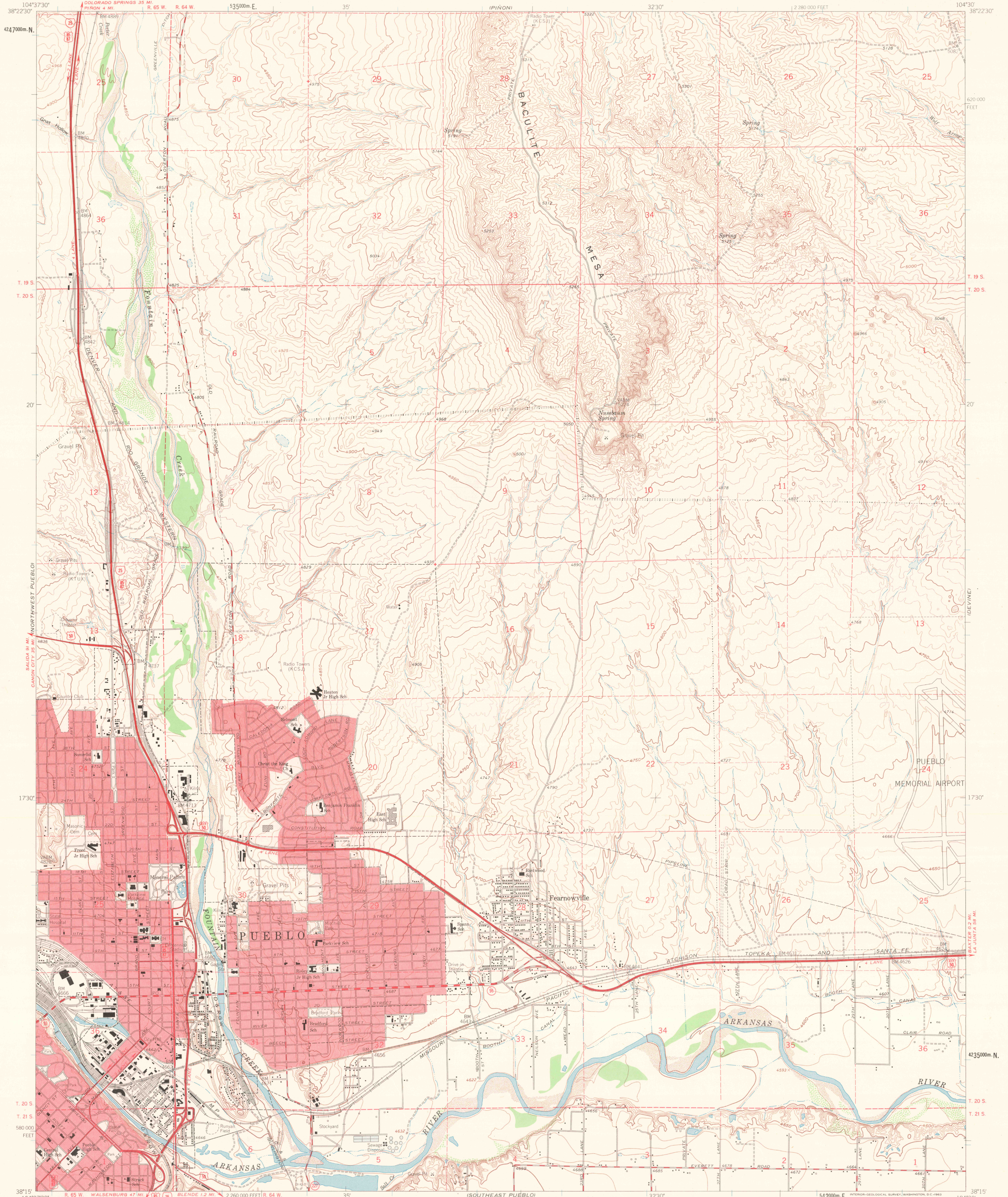


UNITED STATES
DEPARTMENT OF THE INTERIOR
GEOLOGICAL SURVEY

NORTHEAST PUEBLO QUADRANGLE
COLORADO-PUEBLO CO.
7.5 MINUTE SERIES (TOPOGRAPHIC)



Maped, edited, and published by the Geological Survey

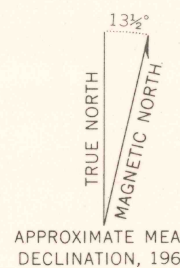
Control by USGS and USC&GS

Topography by photogrammetric methods from aerial photographs taken 1954 and 1957. Field checked 1961

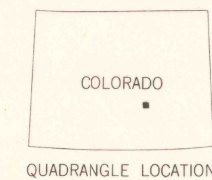
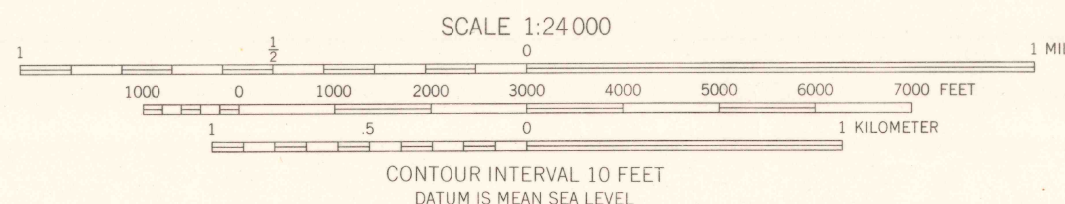
Polycyclic projection. 1927 North American datum. 10,000-foot grid based on Colorado coordinate system, south zone. 10,000-meter Universal Transverse Mercator grid ticks, zone 13, shown in blue.

Red tint indicates areas in which only landmark buildings are shown.

Fine red dashed lines indicate selected fence and field lines where generally visible on aerial photographs. This information is unchecked.



APPROXIMATE MEAN DECLINATION, 1961



QUADRANGLE LOCATION

ROAD CLASSIFICATION		
Heavy-duty	Light-duty	
Medium-duty	Unimproved dirt	
Interstate Route	U.S. Route	State Route

NORTHEAST PUEBLO, COLO.
N3815-W10430/7.5

1961

FILE COPY
DEC 4 1969

MAP INFORMATION OFFICE
GEOLOGICAL SURVEY