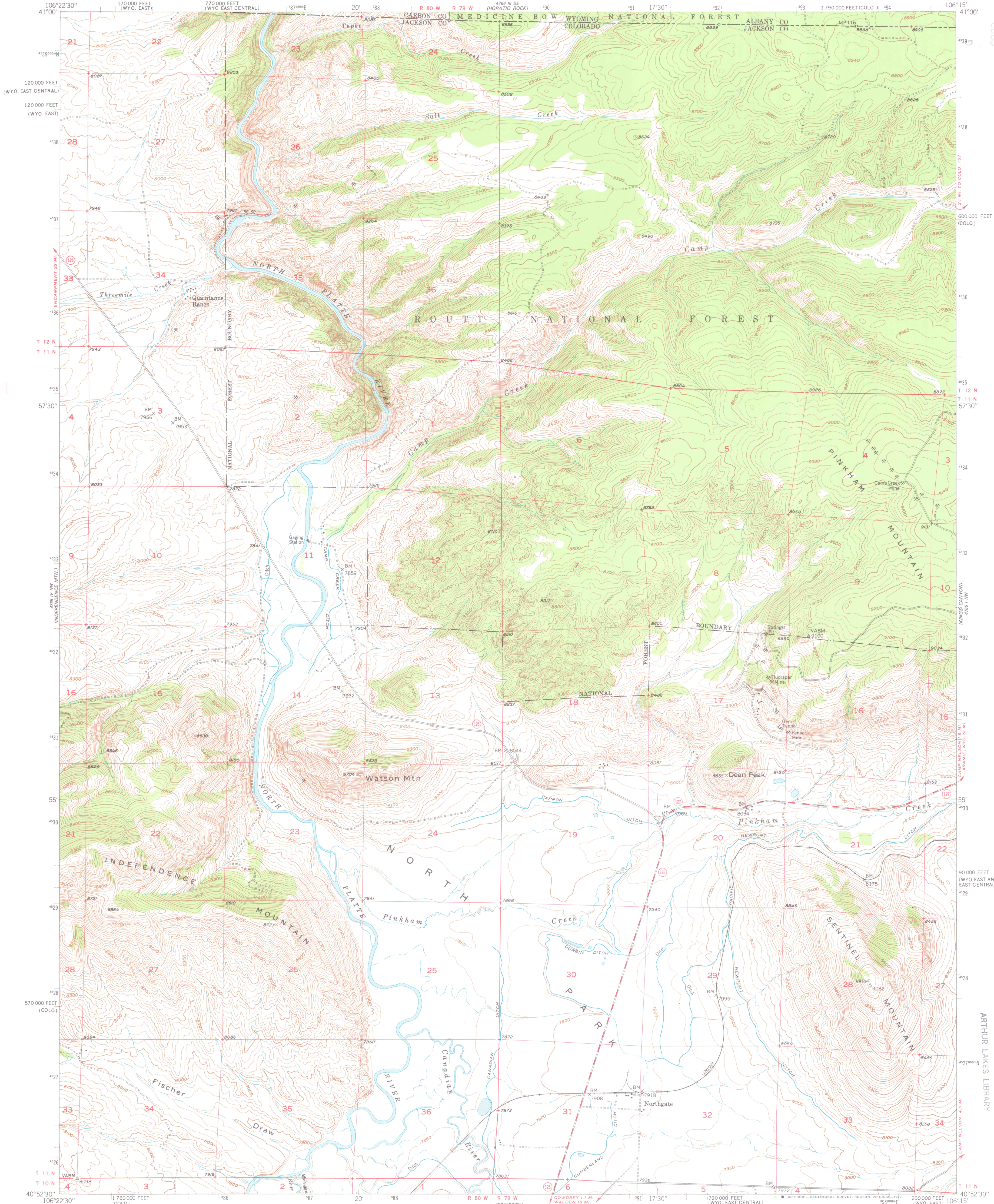


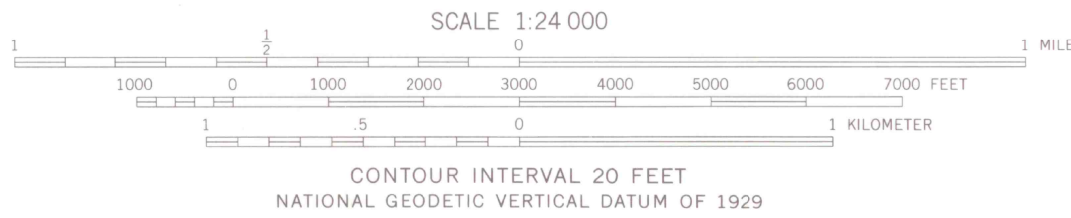
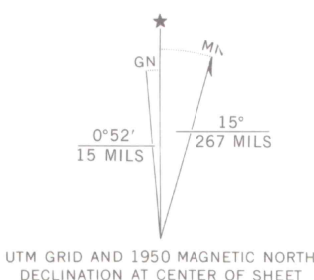
UNITED STATES
DEPARTMENT OF THE INTERIOR
GEOLOGICAL SURVEY



NORTHGATE QUADRANGLE
COLORADO-WYOMING
7.5 MINUTE SERIES (TOPOGRAPHIC)



Maped, edited and published by the Geological Survey as part of the Department of the Interior program for the development of the Missouri River Basin
Control by USGS, USC&GS and U.S. Forest Service
Topography from aerial photographs by multiplex methods
Aerial photographs taken 1947. Field check, 1950
Polyconic projection. 1927 North American datum
10,000-foot grid based on Colorado coordinate system, north zone and Wyoming coordinate system, east and east central zones
1000-meter Universal Transverse Mercator grid ticks, zone 13 shown in blue
Land lines omitted in T 12 N-R 79 W because of insufficient data
There may be private inholdings within the boundaries of the National or State reservation shown on this map



ROAD CLASSIFICATION
Heavy-duty... 4 LANE 16 LANE
Medium-duty... 4 LANE 16 LANE
Unimproved dirt
U. S. Route
State Route

OFFICE COPY
LIBRARY USE ONLY

NORTHGATE, COLO.
N4052.5-W10615.7.5
1950
DMA 4765 IV NE-SERIES V877



SEP 28 1981
MAP ROOM
ARTHUR LAKES LIBRARY

G 3700
S24
G4
MAP ROOM
C222
S24
U5
C.3