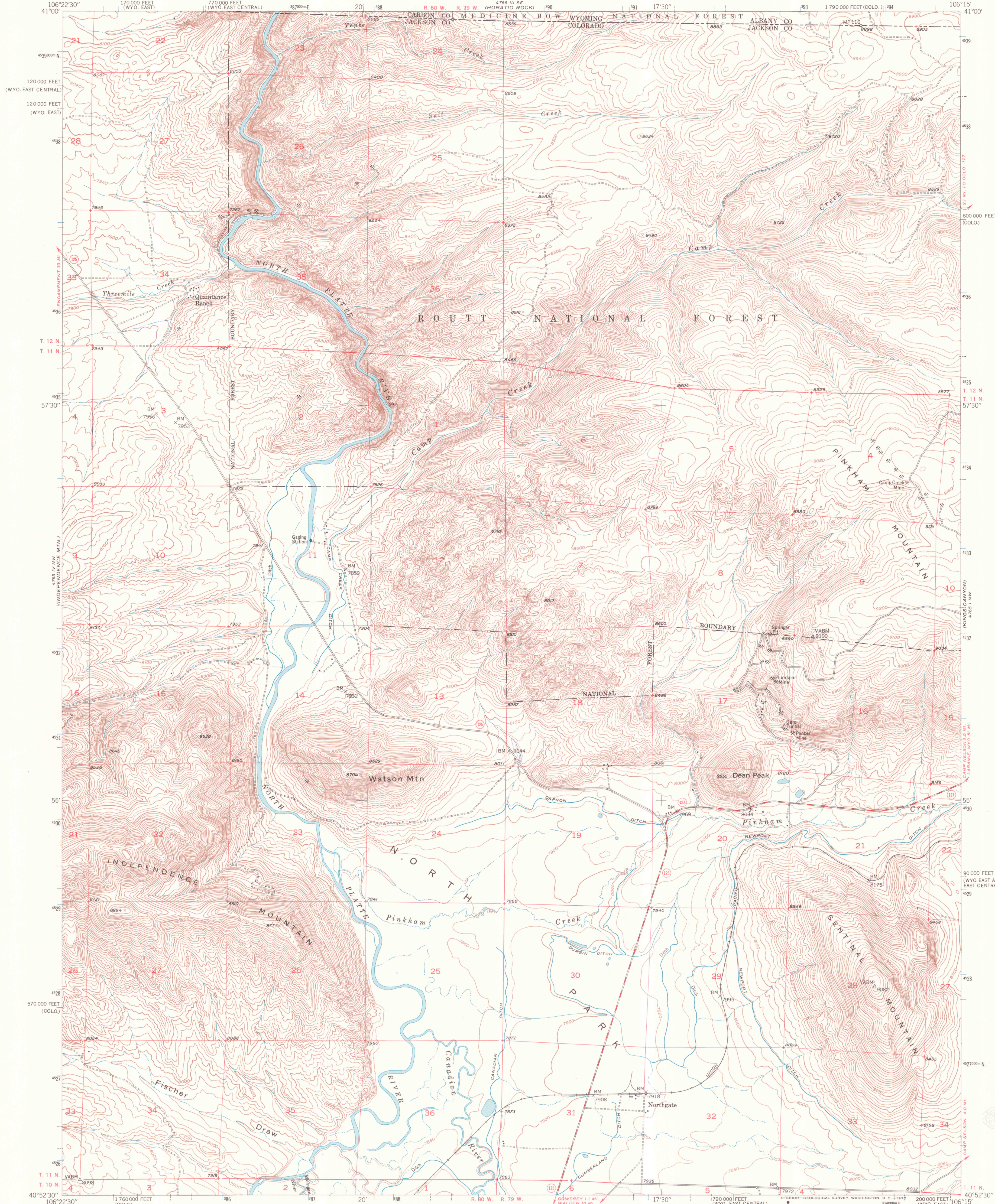
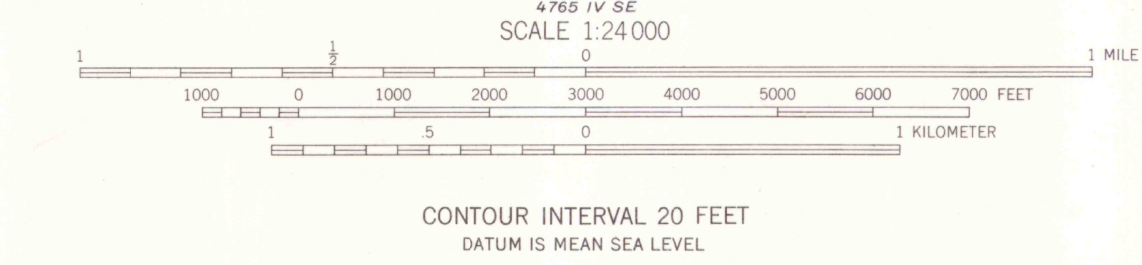
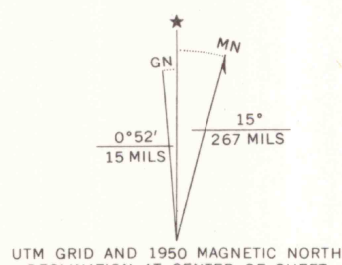


UNITED STATES  
DEPARTMENT OF THE INTERIOR  
GEOLOGICAL SURVEY

NORTHGATE QUADRANGLE  
COLORADO-WYOMING  
7.5 MINUTE SERIES (TOPOGRAPHIC)



Maped, edited, and published by the Geological Survey as part of the Department of the Interior program for the development of the Missouri River Basin Control by USGS, USC&GS and U.S. Forest Service Topography from aerial photographs by multiplex methods Aerial photographs taken 1947. Field check, 1950 Polyconic projection. 1927 North American datum 10,000-foot grid based on Colorado coordinate system, north zone and Wyoming coordinate system, east and east central zones Land lines omitted in T. 12 N. - R. 79 W. because of insufficient data 1000-meter Universal Transverse Mercator grid ticks, zone 13, shown in blue



ROAD CLASSIFICATION			
Heavy-duty	Light-duty	Unimproved dirt	
Medium-duty			
U. S. Route	State Route		

THIS MAP COMPLIES WITH NATIONAL MAP ACCURACY STANDARDS  
FOR SALE BY U. S. GEOLOGICAL SURVEY, DENVER, COLORADO 80225, OR WASHINGTON, D. C. 20242  
A FOLDER DESCRIBING TOPOGRAPHIC MAPS AND SYMBOLS IS AVAILABLE ON REQUEST

NORTHGATE, COLO.-WYO.  
N4052.5-W10615.7.5  
1950  
AMS 4765 IV NE-SERIES V877

G 3700  
624  
64  
MAP ROOM