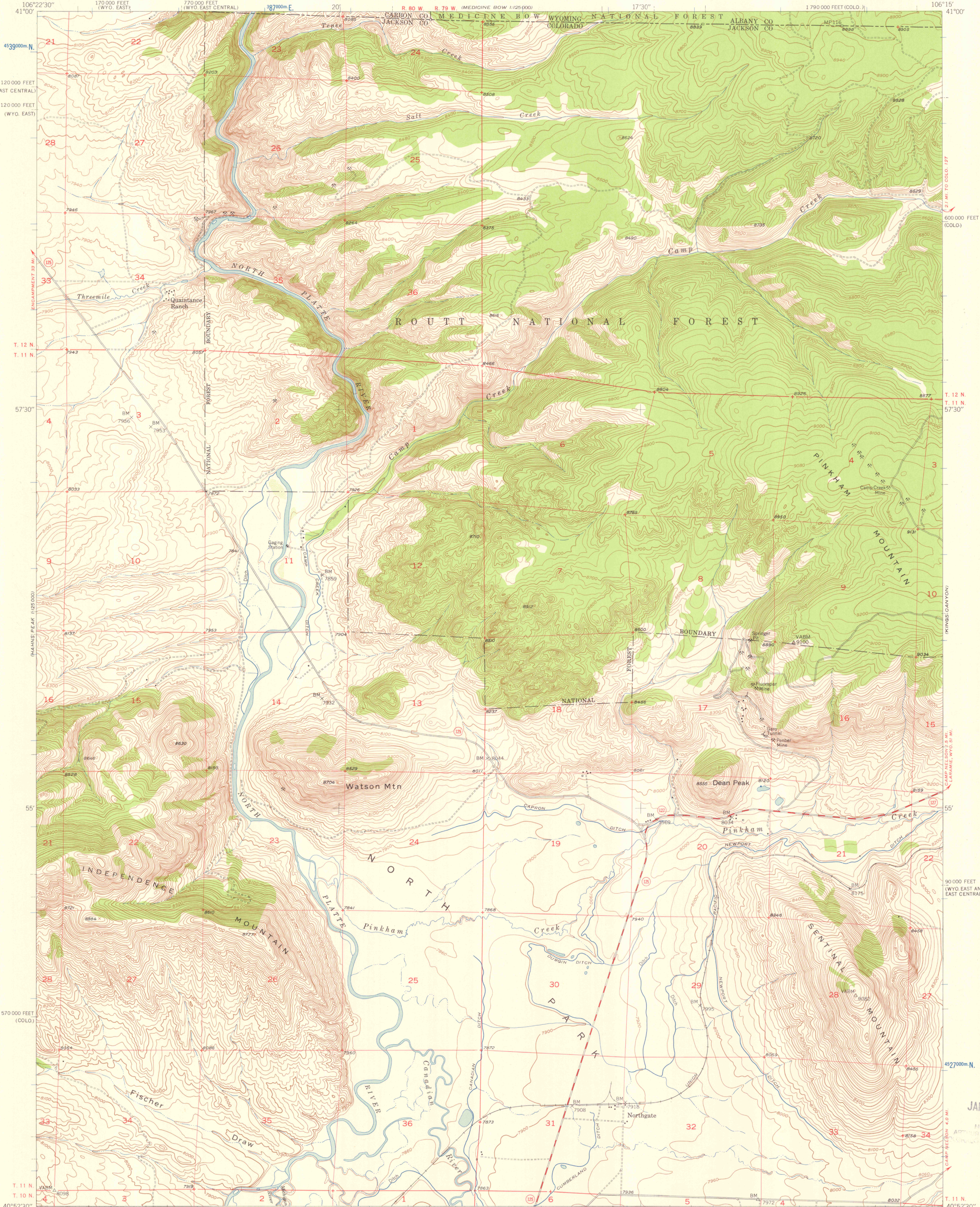
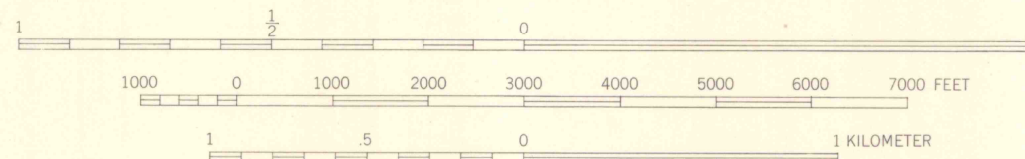


UNITED STATES  
DEPARTMENT OF THE INTERIOR  
GEOLOGICAL SURVEY

NORTHGATE QUADRANGLE  
COLORADO-WYOMING  
7.5 MINUTE SERIES (TOPOGRAPHIC)



Mapped, edited, and published by the Geological Survey as part of the Department of the Interior program for the development of the Missouri River Basin. Control by USGS, USC&GS and U.S. Forest Service. Topography from aerial photographs by multiplex methods. Aerial photographs taken 1947. Field check, 1950. Polyconic projection. 1927 North American datum. 10,000-foot grid based on Colorado coordinate system, north zone and Wyoming coordinate system, east and east-central zones. Land lines omitted in T. 12 N. - R. 79 W. because of insufficient data. 1000-meter Universal Transverse Mercator grid ticks, zone 13, shown in blue.



CONTOUR INTERVAL 20 FEET  
DATUM IS MEAN SEA LEVEL

THIS MAP COMPLIES WITH NATIONAL MAP ACCURACY STANDARDS  
FOR SALE BY U.S. GEOLOGICAL SURVEY, FEDERAL CENTER, DENVER, COLORADO OR WASHINGTON 25, D. C.  
A FOLDER DESCRIBING TOPOGRAPHIC MAPS AND SYMBOLS IS AVAILABLE ON REQUEST

ROAD CLASSIFICATION  
Heavy-duty ——— 4 LANE 1 LANE Light-duty ———  
Medium-duty ——— 4 LANE 1 LANE Unimproved dirt ———  
U. S. Route ——— State Route ———

NORTHGATE, COLO.-WYO.  
N4052 5-W10615/7.5  
1950

JAN 14 1958

HAD ROOM  
ARTHUR L. ALLEN LIBRARY  
UNIVERSITY OF MINES

OFFICE COPY

3701  
C222  
S24  
15

05009