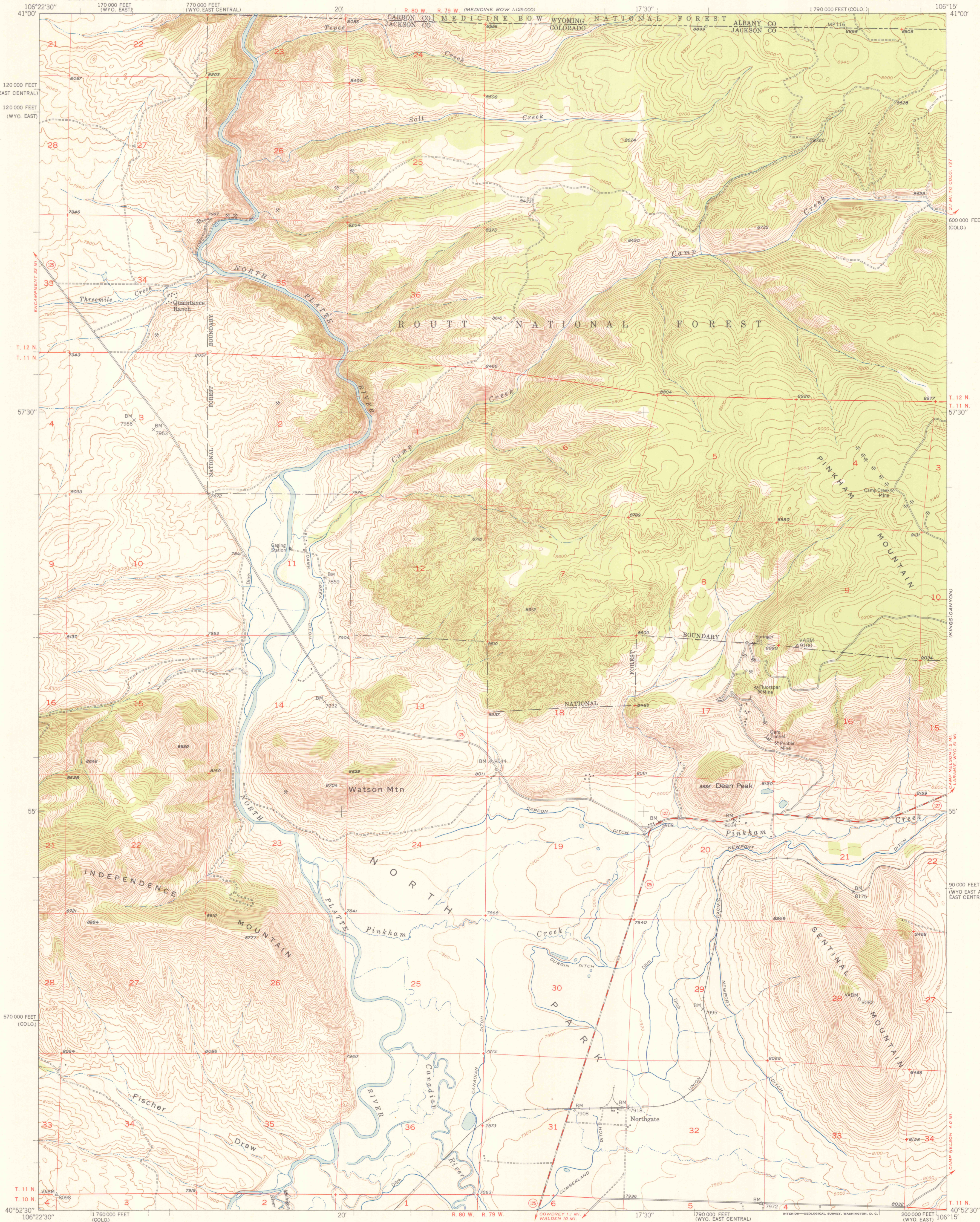
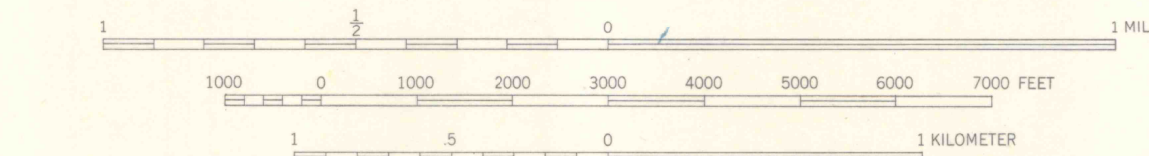
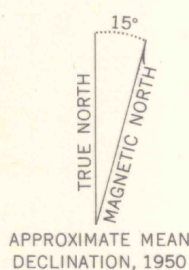


UNITED STATES
DEPARTMENT OF THE INTERIOR
GEOLOGICAL SURVEY

NORTHGATE QUADRANGLE
COLORADO-WYOMING
7.5 MINUTE SERIES (TOPOGRAPHIC)



Maped, edited, and published by the Geological Survey
as part of the Department of the Interior program
for the development of the Missouri River Basin
Control by USGS, USC&GS and U.S. Forest Service
Topography from aerial photographs by multiplex methods
Aerial photographs taken 1947. Field check, 1950
Polyconic projection. 1927 North American datum
10,000-foot grid based on Colorado coordinate system,
north zone and Wyoming coordinate system, east and
east central zones
Land lines omitted in T. 12 N. - R. 79 W.
because of insufficient data



CONTOUR INTERVAL 20 FEET
DATUM IS MEAN SEA LEVEL

THIS MAP COMPLIES WITH NATIONAL MAP ACCURACY STANDARDS
FOR SALE BY U.S. GEOLOGICAL SURVEY, FEDERAL CENTER, DENVER, COLORADO OR WASHINGTON 25, D. C.
A FOLDER DESCRIBING TOPOGRAPHIC MAPS AND SYMBOLS IS AVAILABLE ON REQUEST

ROAD CLASSIFICATION
Heavy-duty... LIANE & LANE Light-duty...
Medium-duty... LIANE & LANE Unimproved dirt...
U. S. Route... State Route...

NORTHGATE, COLO.-WYO.
N4052.5-W10615/7.5

EDITION OF 1952