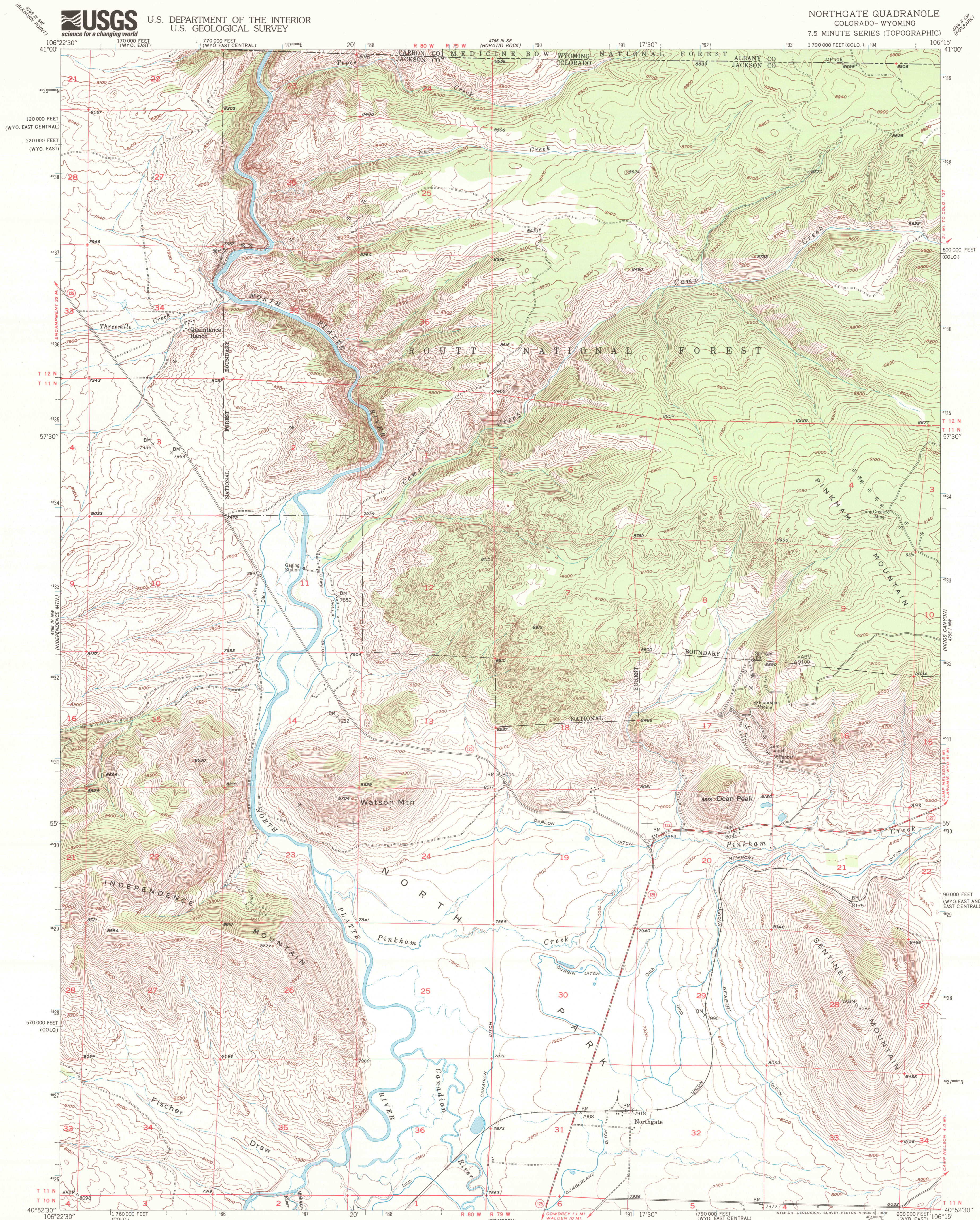




U.S. DEPARTMENT OF THE INTERIOR
U.S. GEOLOGICAL SURVEY

NORTHGATE QUADRANGLE
COLORADO-WYOMING
7.5 MINUTE SERIES (TOPOGRAPHIC)

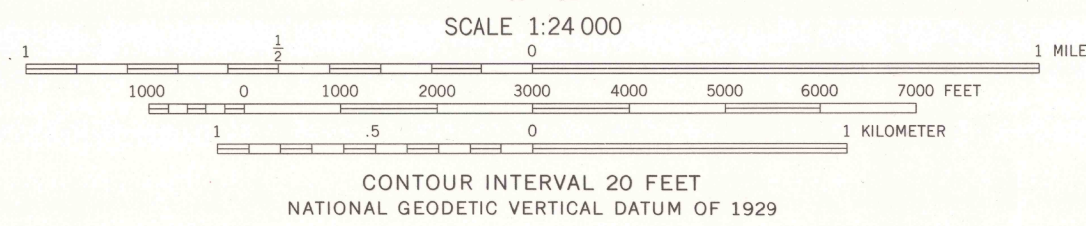
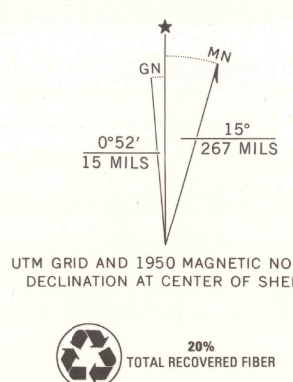


Mapped, edited, and published by the Geological Survey as part of the Department of the Interior program for the development of the Missouri River Basin

Control by USGS, USC&GS and U.S. Forest Service
Topography from aerial photographs by multiplex methods
Aerial photographs taken 1947. Field check, 1950

Polyconic projection. 1927 North American datum
10,000-foot grid based on Colorado coordinate system,
north zone and Wyoming coordinate system, east and
east central zones
1000-meter Universal Transverse Mercator grid ticks, zone 13
shown in blue

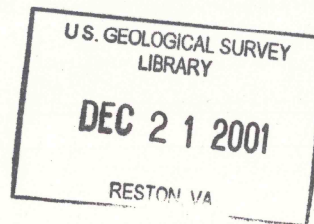
Land lines omitted in T 12 N-R 79 W
because of insufficient data
There may be private inholdings within the boundaries of the
National or State reservation shown on this map



THIS MAP COMPLIES WITH NATIONAL MAP ACCURACY STANDARDS
FOR SALE BY U.S. GEOLOGICAL SURVEY, P.O. BOX 25286, DENVER, COLORADO 80225
A FOLDER DESCRIBING TOPOGRAPHIC MAPS AND SYMBOLS IS AVAILABLE ON REQUEST



ROAD CLASSIFICATION
Heavy-duty ——— 4 LANE 1 LANE Light-duty ———
Medium-duty ——— 4 LANE 1 LANE Unimproved dirt ———
U. S. Route State Route



NORTHGATE, COLO.
N4052.5-W10615.7.5

1950
DMA 4765 IV NE—SERIES V877

