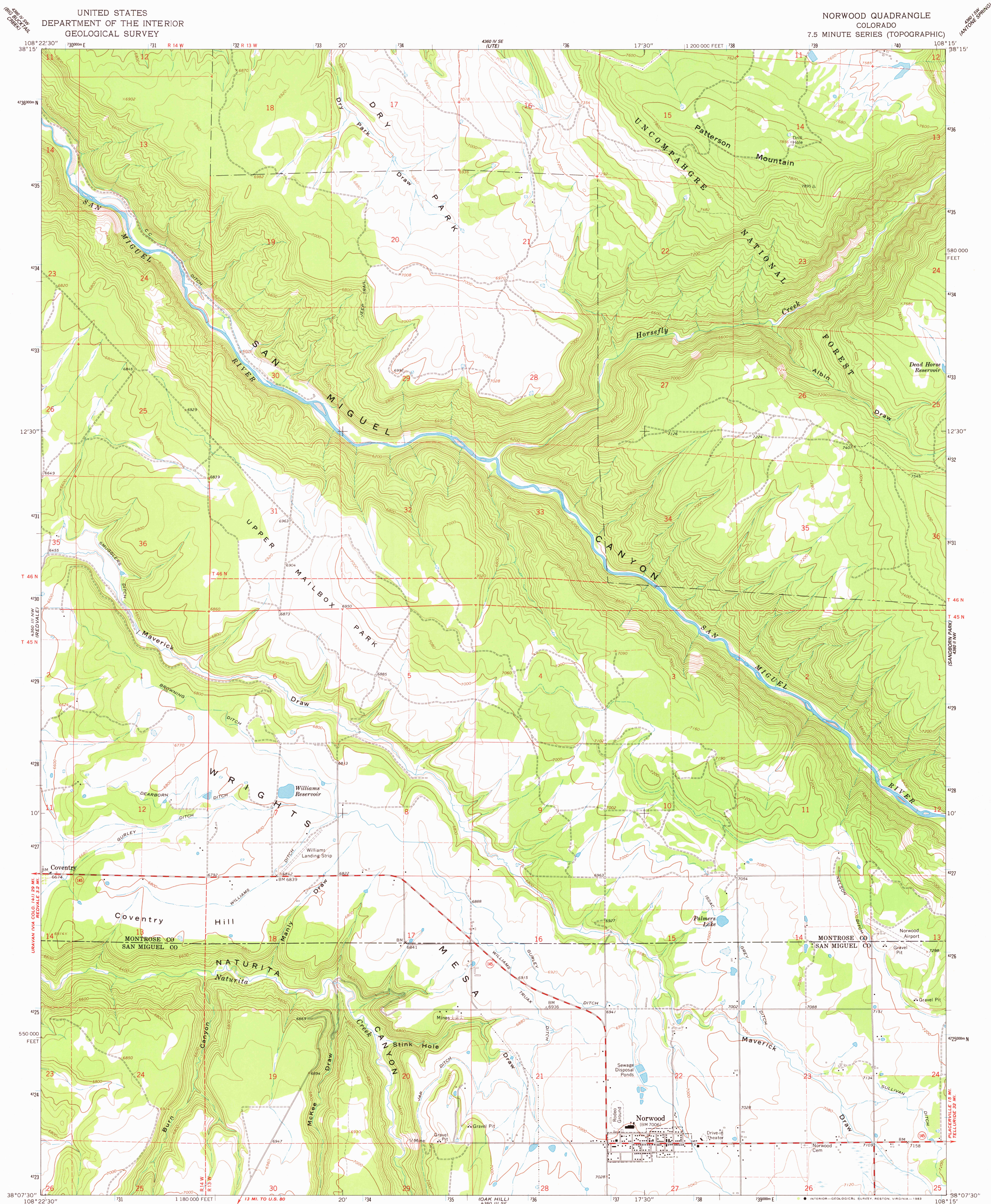


UNITED STATES
DEPARTMENT OF THE INTERIOR
GEOLOGICAL SURVEY

NORWOOD QUADRANGLE
COLORADO
7.5 MINUTE SERIES (TOPOGRAPHIC)



Mapped, edited, and published by the Geological Survey
Control by USGS and USC&GS

Topography by photogrammetric methods from aerial
photographs taken 1963. Field checked 1964

Polyconic projection. 1927 North American datum
10,000-foot grid based on Colorado coordinate system,
south zone

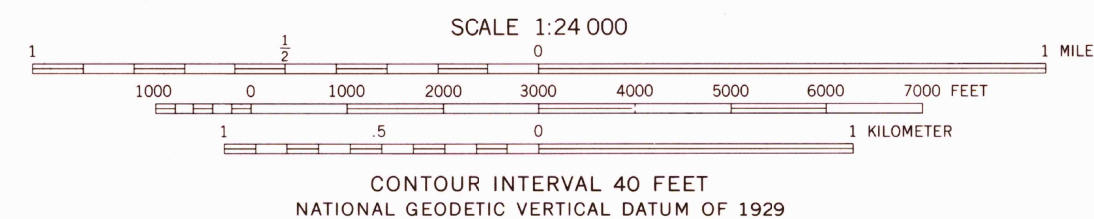
1000-meter Universal Transverse Mercator grid ticks,
zone 12, shown in blue

Fine red dashed lines indicate selected fence lines

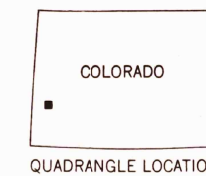
Where omitted, land lines have not been established

To place on the predicted North American Datum 1983
move the projection lines 4 meters north and
57 meters east as shown by dashed corner ticks

There may be private inholdings within the boundaries of
the National or State reservations shown on this map



ROAD CLASSIFICATION
Medium-duty ——— Light-duty ———
Unimproved dirt ———
State Route



QUADRANGLE LOCATION

Map photoinspected 1973
No major culture or drainage changes observed

NORWOOD, COLO.
N3807.5—W10815.7/5

1964
PHOTOINSPECTED 1973
DMA 4360 III NE-SERIES V877

NOV 17 1988