

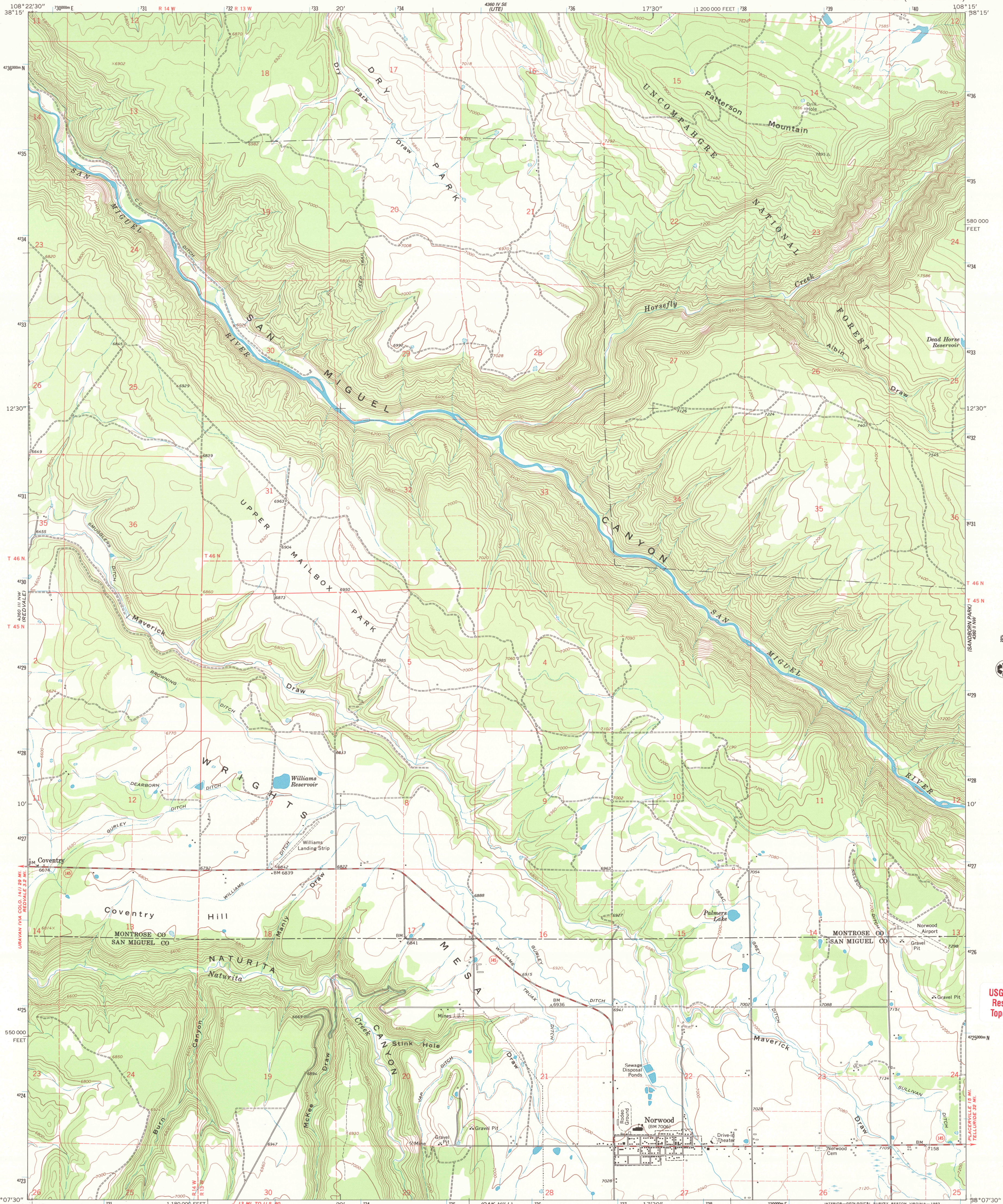
500000  
1000000  
1500000  
2000000  
2500000  
3000000  
3500000  
4000000  
4500000  
5000000  
5500000  
6000000  
6500000  
7000000  
7500000  
8000000  
8500000  
9000000  
9500000  
10000000



U.S. DEPARTMENT OF THE INTERIOR  
U.S. GEOLOGICAL SURVEY

NORWOOD QUADRANGLE  
COLORADO  
7.5 MINUTE SERIES (TOPOGRAPHIC)

500000  
1000000  
1500000  
2000000  
2500000  
3000000  
3500000  
4000000  
4500000  
5000000  
5500000  
6000000  
6500000  
7000000  
7500000  
8000000  
8500000  
9000000  
9500000  
10000000



Mapped, edited, and published by the Geological Survey  
Control by USGS and USC&GS  
Topography by photogrammetric methods from aerial photographs taken 1963. Field checked 1964  
Polyconic projection. 1927 North American datum  
10,000-foot grid based on Colorado coordinate system, south zone  
1000-meter Universal Transverse Mercator grid ticks, zone 12, shown in blue  
Fine red dashed lines indicate selected fence lines  
Where omitted, land lines have not been established  
To place on the predicted North American Datum 1983 move the projection lines 4 meters north and 57 meters east as shown by dashed corner ticks

UTM GRID AND 1964 MAGNETIC NORTH DECLINATION AT CENTER OF SHEET  
14° 29' 29" N  
14° 29' 29" N  
29 MILS

SCALE 1:24 000  
0 1000 2000 3000 4000 5000 6000 7000 FEET  
0 1 2 3 4 5 6 7 KILOMETER

CONTOUR INTERVAL 40 FEET  
NATIONAL GEODETIC VERTICAL DATUM OF 1929

ROAD CLASSIFICATION  
Medium-duty ——— Light-duty ———  
Unimproved dirt - - - - - State Route

COLORADO  
QUADRANGLE LOCATION  
Map photoinspected 1973  
No major culture or drainage changes observed

USGS LIBRARY - RESTON  
3 1818 00504166 8

NORWOOD, COLO.  
N3807.5—W10815/7.5  
1964  
PHOTOINSPECTED 1973  
DMA 4360 III NE-SERIES V877

THIS MAP COMPLIES WITH NATIONAL MAP ACCURACY STANDARDS  
FOR SALE BY U.S. GEOLOGICAL SURVEY, P.O. BOX 25286, DENVER, COLORADO 80225  
A FOLDER DESCRIBING TOPOGRAPHIC MAPS AND SYMBOLS IS AVAILABLE ON REQUEST

USGS Library  
Reston, VA.  
Topo Archive

JUN 19 2005

ISBN 060712515-2  
9 780607 125153